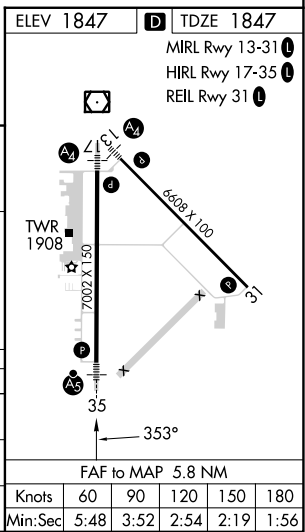
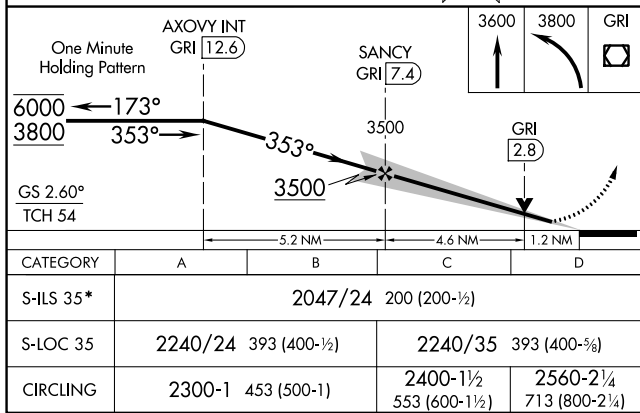
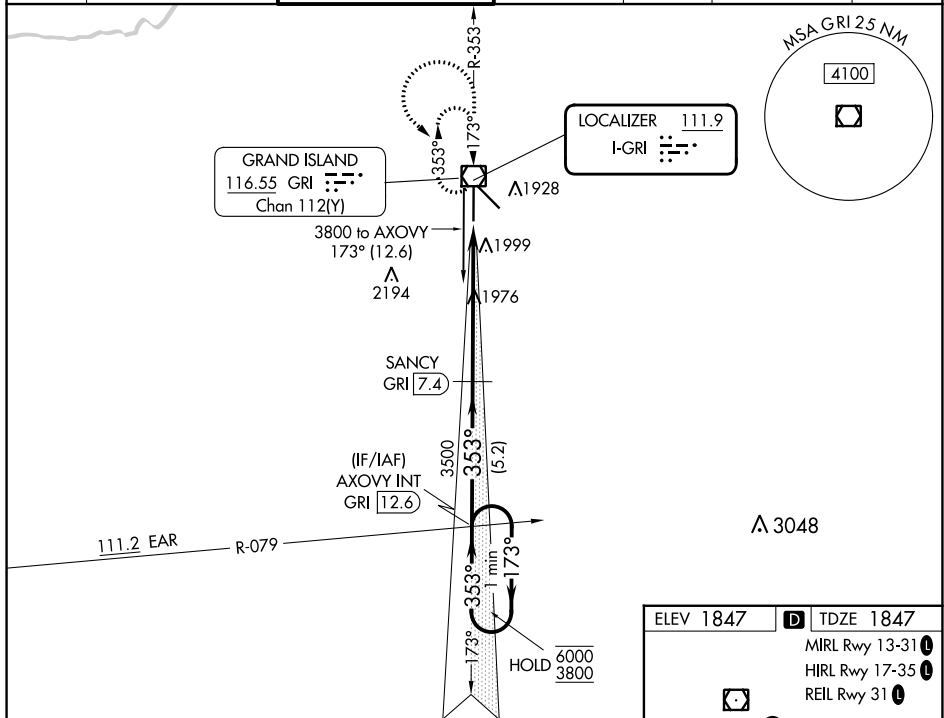


LOC I-GRI 111.9	APP CRS 353°	Rwy Idg TDZE Apt Elev	7002 1847 1847
---------------------------	------------------------	-----------------------------	---

ILS or LOC RWY 35

CENTRAL NEBRASKA RGNL (GRI)

DME required for LOC only.				MALSR 	MISSED APPROACH: Climb to 3600 then climbing left turn to 3800 direct GRI VOR/DME and hold, continue climb-in-hold to 3800.					
For inop ALS, increase S-LOC 35 Cat C/D visibility to RVR 6000. DME from GRI VOR/DME, DME use requires simultaneous reception of I-GRI and GRI DME. *RVR 1800 authorized with use of FD or AP or HUD to DA. (NA when using Aurora altimeter setting).					ATIS 127.4	MINNEAPOLIS CENTER 119.4 278.8	GRAND ISLAND TOWER * 118.2 (CTAF) 259.3	GND CON 121.9 259.3	CLNC DEL 121.9	CLNC DEL 126.05 (when twr closed)



GRAND ISLAND, NEBRASKA Amdt 10 27JAN22	40°58'N-98°19'W	CENTRAL NEBRASKA RGNL (GRI) ILS or LOC RWY 35
---	-----------------	---

NC-2, 31 OCT 2024 to 28 NOV 2024

NC-2, 31 OCT 2024 to 28 NOV 2024