

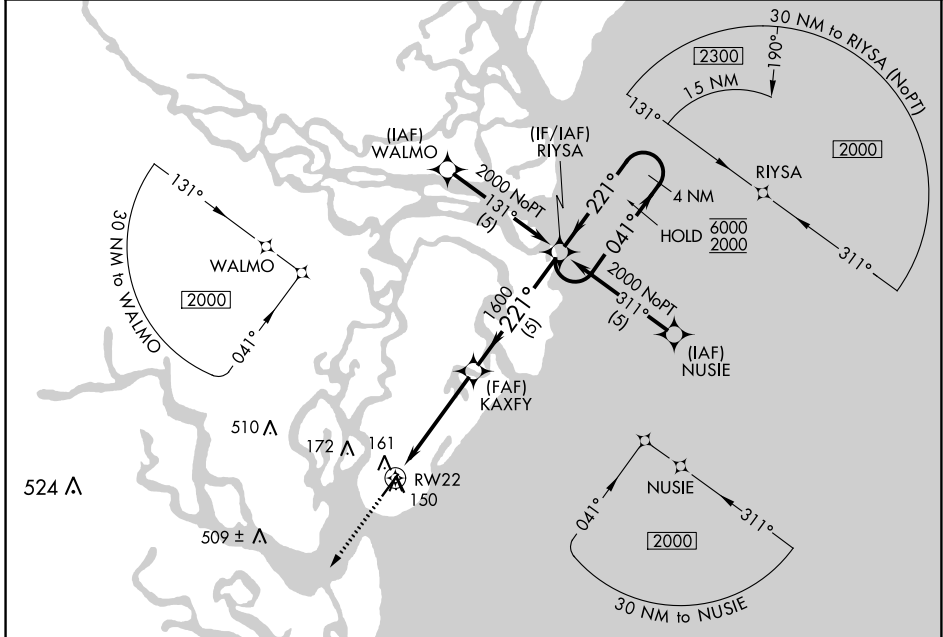
APP CRS	Rwy Idg	4671
221°	TDZE	17
	Apt Elev	19

RNAV (GPS) RWY 22

ST SIMONS ISLAND (SSI)

RNP APCH.	<p>▼ Rwy 22 helicopter visibility reduction below ¾ SM NA. Circling Rwy 16, 34 NA at night.</p>	MISSED APPROACH: Climb to 2000 direct VIXRY and hold.
-----------	-------------------------------------------------------------------------------------------------	-------------------------------------------------------

AWOS-3PT 120.025	JACKSONVILLE CENTER 126.75 277.4	UNICOM 123.05 (CTAF)
----------------------------	--------------------------------------------	--------------------------------

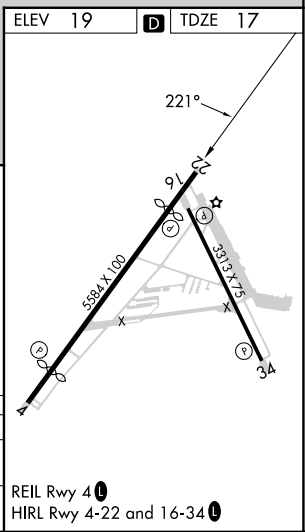
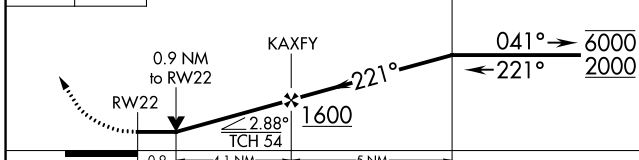


SE-4, 31 OCT 2024 to 28 NOV 2024

SE-4, 31 OCT 2024 to 28 NOV 2024

ELEV 19	D TDZE 17
---------	------------------

2000 VIXRY VGSI and descent angles not coincident (VGSI Angle 4.00/TCH 54).



CATEGORY	A	B	C	D
LNVA MDA	460-1 443 (500-1)		460-1⅓ 443 (500-1⅓)	
CIRCLING	480-1 461 (500-1)		500-1½ 481 (500-1½)	580-2 561 (600-2)

REIL Rwy 4 **D**
HIRL Rwy 4-22 and 16-34 **D**