

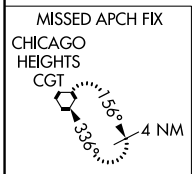
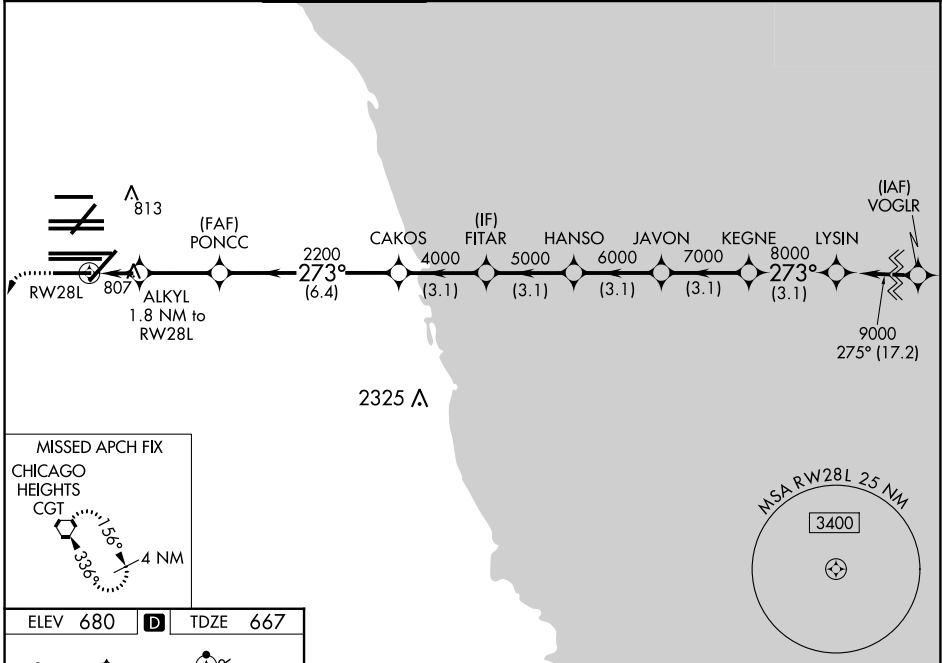
WAAS CH <b>65837</b> <b>W28D</b>	APP CRS <b>273°</b>	Rwy Idg TDZE Apt Elev	<b>7500</b> <b>667</b> <b>680</b>
--	------------------------	-----------------------------	---

# RNAV (GPS) Z RWY 28L

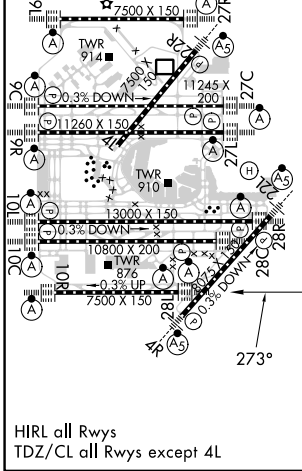
CHICAGO O'HARE INTL (ORD)

RNP APCH.	ALSIF-2	MISSED APPROACH: Climb 1200 then climbing left turn to 4000 direct CGT VORTAC and hold.
<p>Simultaneous approach authorized. LNAV procedure NA during simultaneous operations. For uncompensated Baro-VNAV systems, LNAV/VNAV NA below -19C or above 54C. Use of FD or AP required during simultaneous operations.</p>		

D-ATIS <b>135.4</b> <b>282.225</b>	CHICAGO APP CON <b>119.0 292.125</b>	O'HARE TOWER <b>133.0 348.0</b>	GND CON (TWR NORTH) <b>124.125</b> (TWR SOUTH) <b>118.05</b> <b>226.675</b> (ALL TWRs)	(TWR CENTER) (OBND) <b>121.75</b> (IBND) <b>121.9</b>	CLNC DEL <b>121.6</b>	CPDLC
--	--	------------------------------------	---	---	--------------------------	-------



ELEV 680	<b>D</b>	TDZE 667
----------	----------	----------



1200	4000	CGT						
*LNAV only.								
ALKYL	PONCC	CAKOS	FITAR	HANSO	JAVON	KEGNE	LYSIN	
1.8 NM to RW28L	2200	4000	5000	6000	7000	8000	9000	
*1.1 NM to RW28L								GP 3.00° TCH 55
1.1 NM	0.7	2.9 NM	6.4 NM	3.1 NM	3.1 NM	3.1 NM	3.1 NM	3.1 NM
CATEGORY A		CATEGORY B		CATEGORY C		CATEGORY D		
LPV	DA	867/18		200 (200-1/2)				
LNAV/VNAV	DA	1090/40		423 (500-3/4)				
LNAV	MDA	1060/24		393 (400-1/2)		1060/35		393 (400-5/8)

EC-3, 31 OCT 2024 to 28 NOV 2024

EC-3, 31 OCT 2024 to 28 NOV 2024