

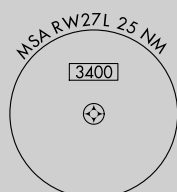
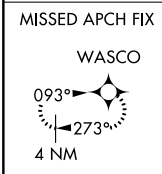
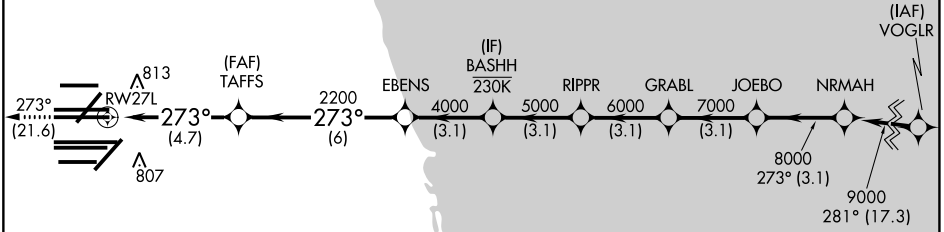
APP CRS	Rwy Idg	<b>11260</b>
<b>273°</b>	TDZE	<b>654</b>
	Apt Elev	<b>680</b>

# RNAV (RNP) Y RWY 27L

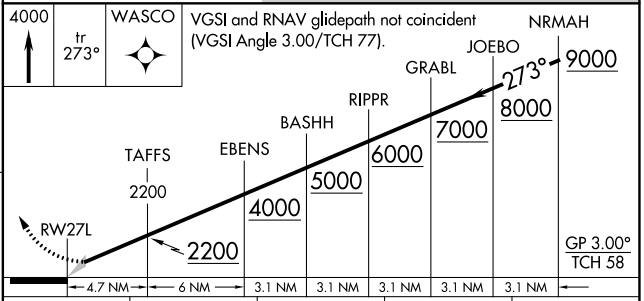
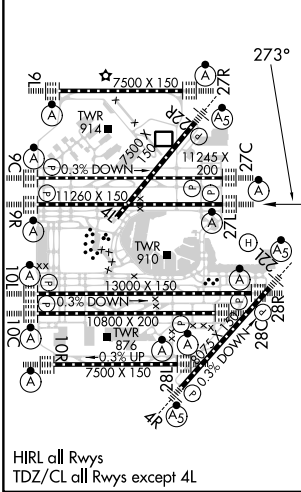
CHICAGO O'HARE INTL (ORD)

RNP AR APCH - GPS.				<b>MISSED APPROACH:</b> Climb to 4000 on track 273° to WASCO and hold.		
Simultaneous approach authorized. Use of FD or AP required during simultaneous operations. For uncompensated Baro-VNAV systems, procedure NA below -19°C or above 54°C.						
D-ATIS	CHICAGO APP CON	O'HARE TOWER	GND CON (TWR NORTH)	(TWR CENTER) (OBND)	CLNC DEL	CPDLC
<b>135.4</b>	<b>119.0 292.125</b>	<b>126.9 348.0</b>	<b>124.125</b>	<b>121.75</b>	<b>121.6</b>	
<b>282.225</b>			<b>118.05</b>	<b>121.9</b>		
			<b>226.675</b> (ALL TWRs)			

## RADAR REQUIRED



ELEV	<b>680</b>	<b>D</b>	TDZE	<b>654</b>
------	------------	----------	------	------------



CATEGORY	A	B	C	D
RNP 0.15 DA		989/26	335 (400-½)	
RNP 0.30 DA		1133/50	479 (500-1)	

**AUTHORIZATION REQUIRED**

EC-3, 31 OCT 2024 to 28 NOV 2024

EC-3, 31 OCT 2024 to 28 NOV 2024