

# ILS PRM RWY 28C (CAT II & III) (CLOSE PARALLEL) CHICAGO O'HARE INTL (ORD)

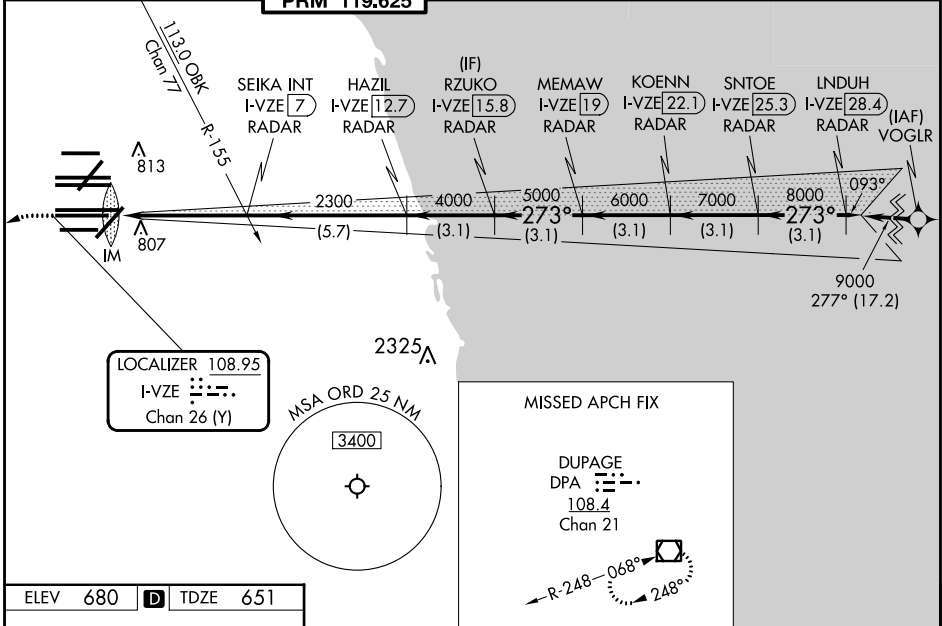
LOC/DME I-VZE <b>108.95</b> Chan 26 (Y)	APP CRS <b>273°</b>	Rwy ldg <b>10800</b> TDZE <b>651</b> Apt Elev <b>680</b>
---	------------------------	--

Aircraft not GPS equipped - RADAR required for procedure entry.  
DME or RADAR required.  
From VOGLR: RNAV 1-GPS required.

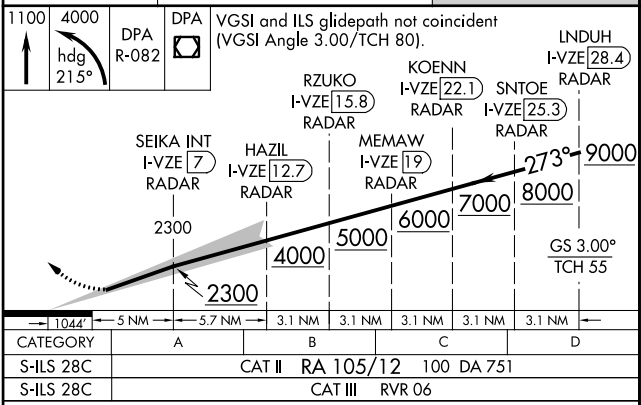
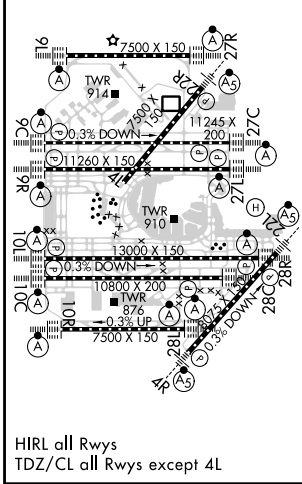
ALSF-2  
MISSED APPROACH:  
Climb to 1100 then climbing left turn to 4000 on heading 215° and DPA VOR/DME R-082 to DPA VOR/DME and hold.

Simultaneous approach authorized. Use of FD or AP required during simultaneous operations. Dual VHF comm required. See additional requirements on AAUP.  
CAT II: RVR 1000 authorized with specific ODSPEC, MSPEC, or LOA approval and use of autoland or HUD to touchdown.

D-ATIS <b>135.4</b> <b>282.225</b>	CHICAGO APP CON <b>119.0 292.125</b>	O'HARE TOWER <b>120.75 348.0</b> <b>PRM 119.625</b>	GND CON (TWR NORTH) <b>124.125</b> (TWR SOUTH) <b>118.05</b> (ALL TWRs) <b>226.675</b>	(TWR CENTER) (OBND) <b>121.75</b> (IBND) <b>121.9</b>	CLNC DEL <b>121.6</b>	CPDLC
--	---	---	---	---	--------------------------	-------



ELEV 680	D	TDZE 651
----------	---	----------



**CATEGORY II & III ILS - SPECIAL AIRCREW & AIRCRAFT CERTIFICATION REQUIRED**

CATEGORY	A	B	C	D
S-ILS 28C	CAT II RA 105/12 100 DA 751			
S-ILS 28C	CAT III RVR 06			

EC-3, 31 OCT 2024 to 28 NOV 2024

EC-3, 31 OCT 2024 to 28 NOV 2024