

LOC/DME I-UYJ <b>111.9</b> Chan 56	APP CRS <b>273°</b>	Rwy ldg <b>11245</b> TDZE <b>653</b> Apt Elev <b>680</b>
--	------------------------	--

# ILS or LOC RWY 27C

CHICAGO O'HARE INTL (ORD)

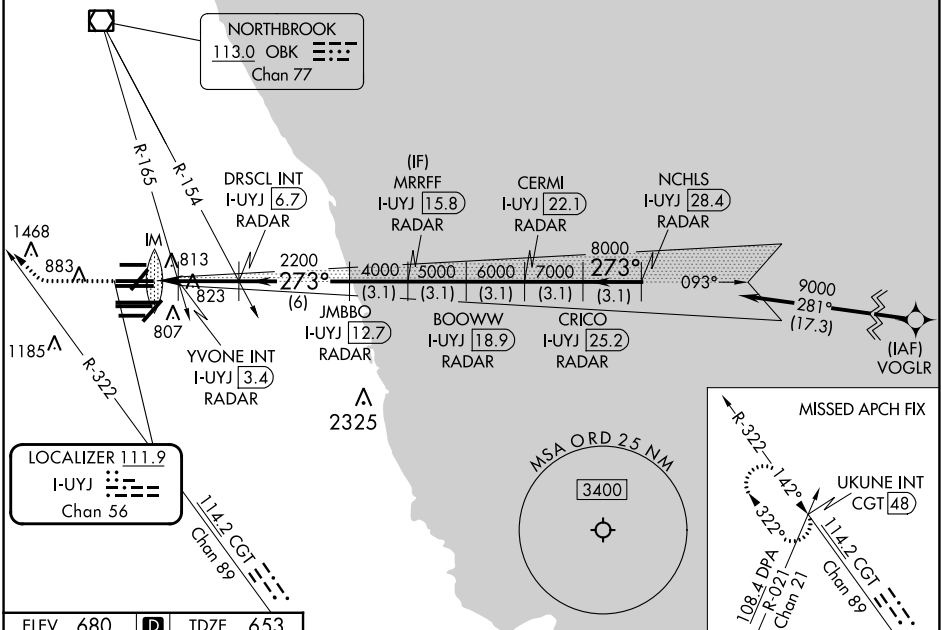
From VOGLR: RNAV 1-GPS required. Aircraft not GPS equipped - RADAR required for procedure entry. DME or RADAR required.

ALS-F-2

MISSED APPROACH: Climb to 1100 then climbing right turn to 4000 on heading 290° and CGT R-322 to UKUNE INT/ CGT 48 DME and hold.

Simultaneous approach authorized. For inop ALS, increase S-LOC 27C Cat C/D visibility to 1½ SM.

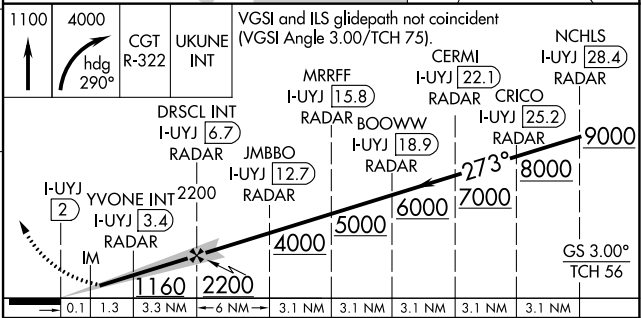
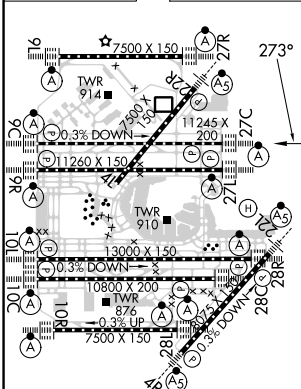
D-ATIS <b>135.4</b> <b>282.225</b>	CHICAGO APP CON <b>119.0 292.125</b>	O'HARE TOWER <b>121.15 348.0</b>	GND CON (TWR NORTH) <b>124.125</b> (TWR SOUTH) <b>118.05</b> (ALL TWRS) <b>226.675</b>	(TWR CENTER) (OBND) <b>121.75</b> (IBND) <b>121.9</b>	CLNC DEL <b>121.6</b>	CPDLC
--	---	-------------------------------------	---	--	--------------------------	-------



EC-3, 31 OCT 2024 to 28 NOV 2024

EC-3, 31 OCT 2024 to 28 NOV 2024

ELEV 680	<b>D</b>	TDZE 653
----------	----------	----------



HIRL all Rwws TDZ/CL all Rwws except 4L		FAF to MAP 4.7 NM	
Knots	60	90	120 150 180
Min:Sec	4:42	3:08	2:21 1:53 1:34
CATEGORY	A	B	C D
S-ILS 27C	853/18 200 (200-½)		
S-LOC 27C	1160/24	507 (500-½)	1160/55 507 (500-1)
YVONE FIX MINIMUMS (DUAL VOR RECEIVERS or DME REQUIRED)			
S-LOC 27C	1080/24	427 (400-½)	1080/40 427 (400-¾)