

(BLTWY7.BLTWY) 22307

AL-164 (FAA)

SCHOLES INTL AT GALVESTON (GLS)

GALVESTON, TEXAS

# BLTWY SEVEN DEPARTURE (RNAV)

ASOS  
 123.95  
 CLNC DEL (When twr closed)  
 135.35  
 GND CON  
 118.625  
 GALVESTON TOWER \*  
 120.575 (CTAF)  
 HOUSTON DEP CON  
 134.45 284.0

**TOP ALTITUDE:  
 ASSIGNED BY ATC**

NOTE: RADAR required.  
 NOTE: DME/DME/IRU or GPS required.  
 NOTE: RNAV 1.

### TAKEOFF MINIMUMS

Rwys 14, 18, 32, 36:

Standard with minimum climb of 500' per NM to 520.

### DEPARTURE ROUTE DESCRIPTION

TAKEOFF RUNWAY 14: Climb on heading 138° to 520 for RADAR vectors to DREMR, thence . . .

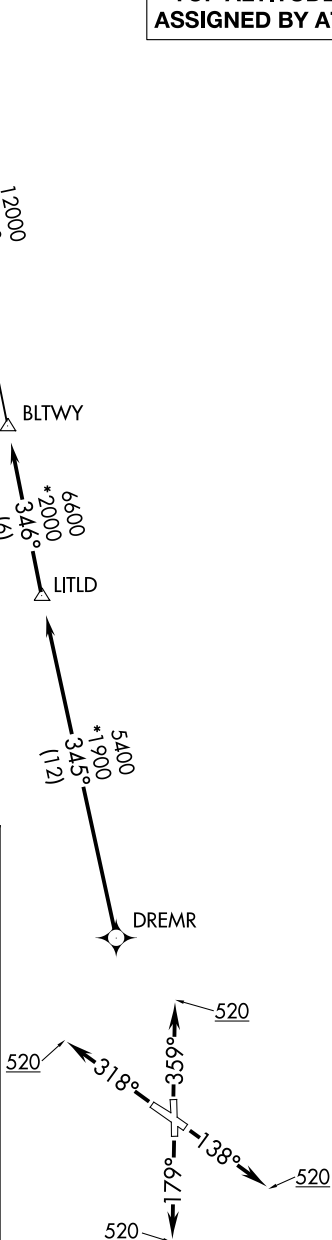
TAKEOFF RUNWAY 18: Climb on heading 179° to 520 for RADAR vectors to DREMR, thence . . .

TAKEOFF RUNWAY 32: Climb on heading 318° to 520 for RADAR vectors to DREMR, thence . . .

TAKEOFF RUNWAY 36: Climb on heading 359° to 520 for RADAR vectors to DREMR, thence . . .

...on track 345° to LITLD, then on track 346° to BLTWY, then on (transition). Maintain ATC assigned altitude. Expect filed altitude 10 minutes after departure.

CRIED TRANSITION (BLTWY7.CRIED)



NOTE: Chart not to scale.

# BLTWY SEVEN DEPARTURE (RNAV)

(BLTWY7.BLTWY) 07OCT21

GALVESTON, TEXAS  
SCHOLES INTL AT GALVESTON (GLS)

SC-5, 31 OCT 2024 to 28 NOV 2024

SC-5, 31 OCT 2024 to 28 NOV 2024