

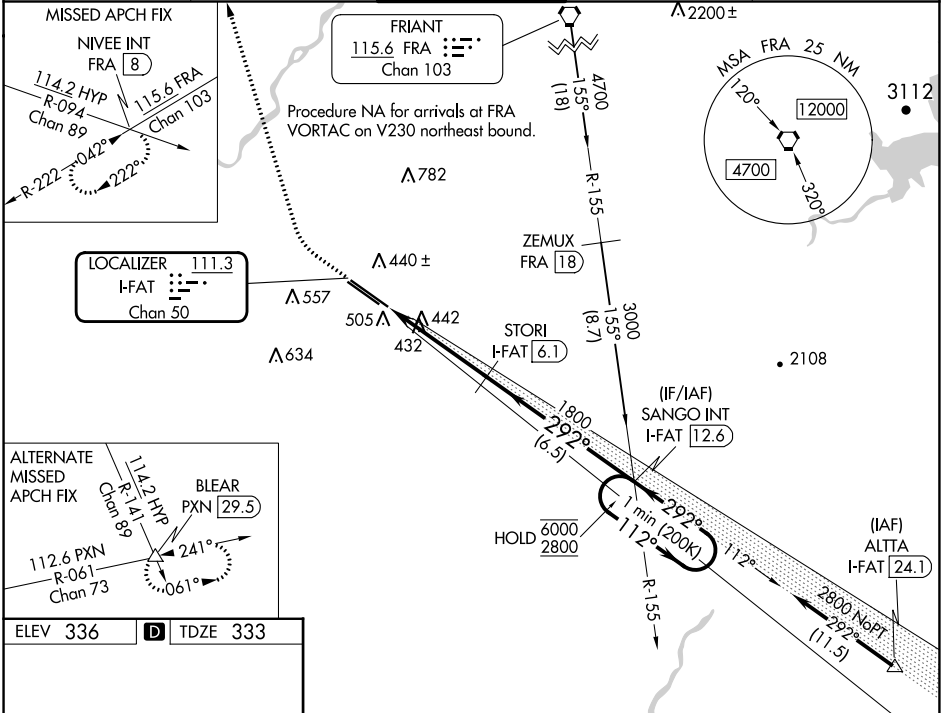
LOC/DME I-FAT <b>111.3</b> Chan 50	APP CRS <b>292°</b>	Rwy Idg TDZE Apt Elev	<b>9227</b> <b>333</b> <b>336</b>
--	------------------------	-----------------------------	---

# ILS Y RWY 29R (CAT II & III)

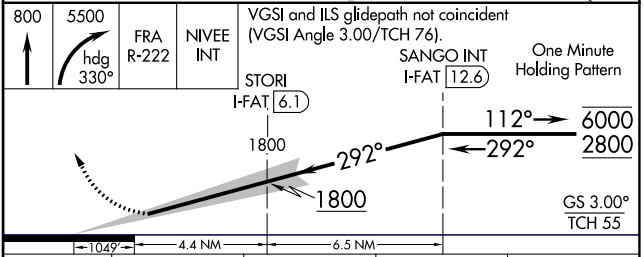
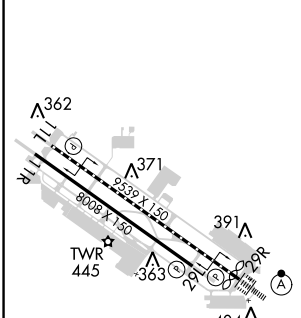
FRESNO YOSEMITE INTL (FAT)

<p><b>▼</b> CAT II: RVR 1000 authorized with specific OPSPEC, MSPEC, or LOA approval and use of autoland or HUD to touchdown.</p>	<p>ALSIF-2 <b>(A)</b></p>	<p>MISSED APPROACH: Climb to 800 then climbing right turn to 5500 on heading 330° and FRA VORTAC R-222 to NIVEE INT/FRA 8 DME and hold, continue climb-in-hold to 5500.</p>
---	-------------------------------	---

<p>ATIS <b>121.35 273.6</b></p>	<p>FRESNO APP CON <b>119.6 351.95</b></p>	<p>FRESNO TOWER <b>118.2 251.1</b></p>	<p>GND CON <b>121.7 348.6</b></p>	<p>CLNC DEL <b>124.35 348.6</b></p>
-------------------------------------	---	--	---------------------------------------	---



ELEV 336	<b>D</b>	TDZE 333
----------	----------	----------



CATEGORY	A	B	C	D
S-ILS 29R	CAT II RA 101/12 100 DA 433			
S-ILS 29R	CAT III RVR 06			

**CATEGORY II & III ILS - SPECIAL AIRCREW & AIRCRAFT CERTIFICATION REQUIRED**

SW-2, 11 JUL 2024 to 08 AUG 2024

SW-2, 11 JUL 2024 to 08 AUG 2024