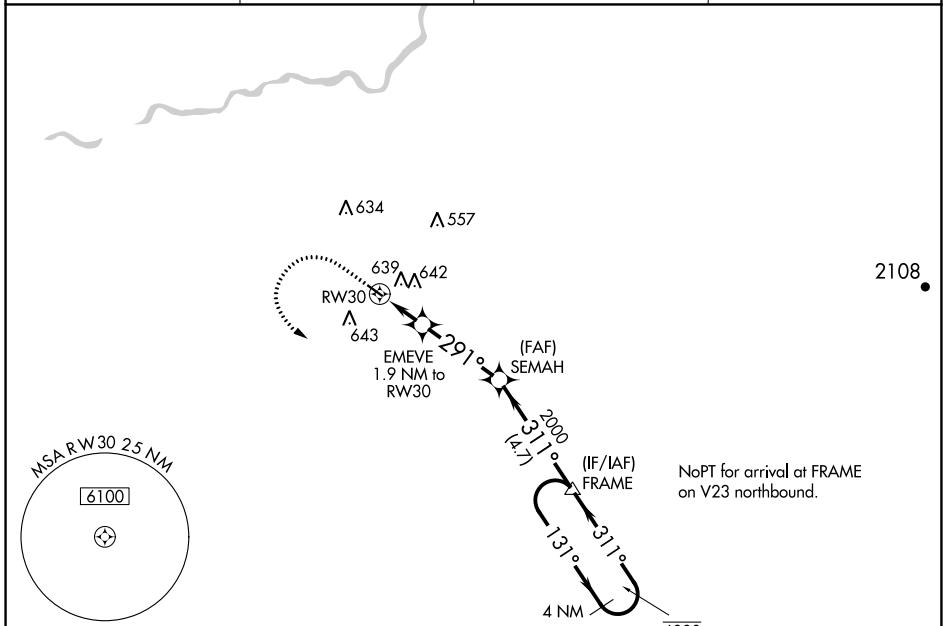


APP CRS <b>291°</b>	Rwy Idg <b>3089</b>
	TDZE <b>280</b>
	Apt Elev <b>280</b>

# RNAV (GPS) RWY 30

FRESNO CHANDLER EXEC (FCH)

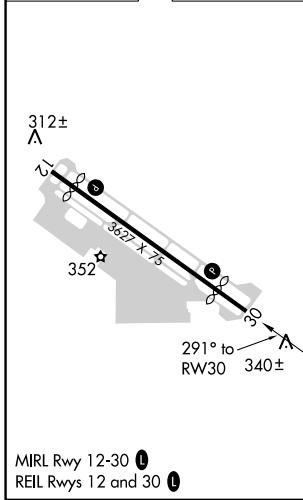
RNP APCH. ▼ Straight-in Rwy 30 NA at night, Circling Rwy 30 NA at night. Rwy 30 helicopter visibility reduction below 1 SM NA.		MISSED APPROACH: Climb to 1000 then climbing left turn to 2000 direct FRAME and hold.	
AWOS-3 <b>135.225</b>	FRESNO APP CON <b>119.0 323.25</b>	CLNC DEL <b>119.0</b>	UNICOM <b>123.0 (CTAF) 0</b>



SW-2, 08 AUG 2024 to 05 SEP 2024

SW-2, 08 AUG 2024 to 05 SEP 2024

ELEV 280	TDZE 280
----------	----------



	1000	2000	FRAME	SEMAH	FRAME	4 NM Holding Pattern
	↑	↶	△			
	EMEVE 1.9 NM to RW30 RW30		3.00° TCH 40 2000	311° 2000	131° 6000 2000	
	-1.9		3.4 NM		4.7 NM	
CATEGORY	A		B		C	
LNAV MDA	800-1		520 (600-1)		800-1 3/8 520 (600-1 3/8)	
<b>C</b> CIRCLING	960-1		680 (700-1)		960-2 680 (700-2)	
					D	
					NA	
					NA	