

WAAS CH 49242 W12A	APP CRS 111°	Rwy Idg TDZE Apt Elev	3212 280 280
--	------------------------	-----------------------------	---

RNAV (GPS) RWY 12

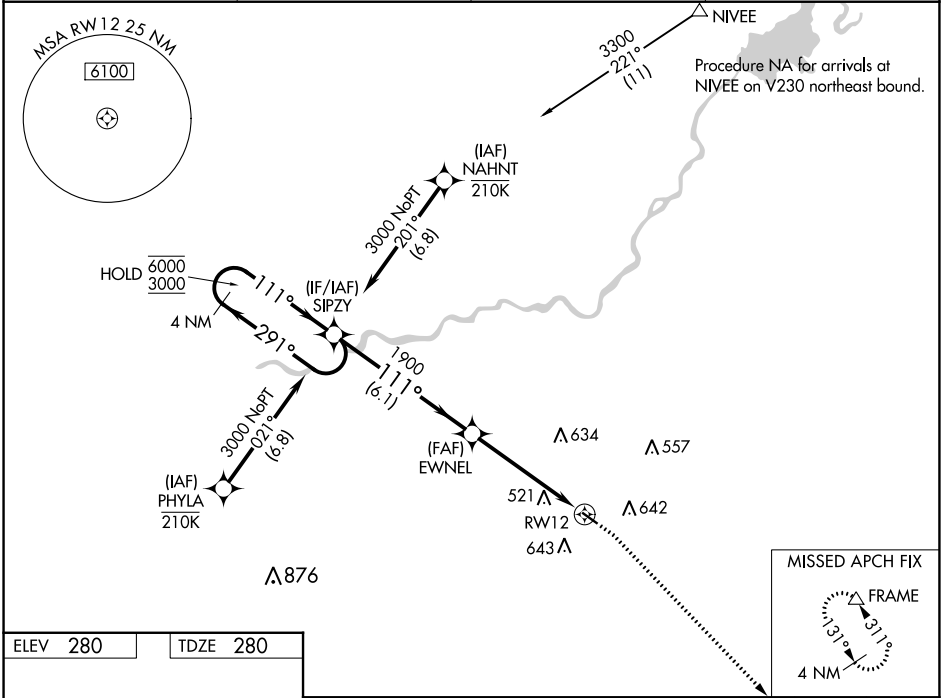
FRESNO CHANDLER EXEC (FCH)

RNP APCH-GPS.

▼ Circling Rwy 30 NA at night. Rwy 12 helicopter visibility reduction below 3/4 SM NA.
▲ For uncompensated Baro-VNAV systems, LNAV/VNAV NA below -1° C or above 54°C.

MISSED APPROACH: Climb to 800 then climbing right turn to 2000 direct FRAME and hold.

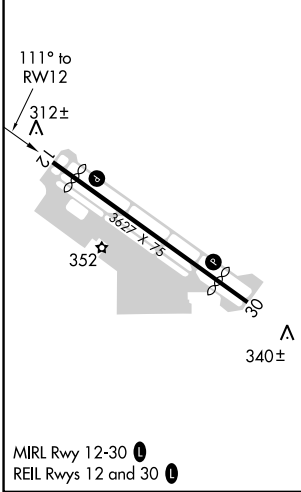
AWOS-3 135.225	FRESNO APP CON 119.0 323.25	CLNC DEL 119.0	UNICOM 123.0 (CTAF) 0
--------------------------	---------------------------------------	--------------------------	---------------------------------



SW-2, 08 AUG 2024 to 05 SEP 2024

SW-2, 08 AUG 2024 to 05 SEP 2024

ELEV 280	TDZE 280
----------	----------



4 NM Holding Pattern		SIPZY	EWNEL	800	2000	FRAME
6000	← 291°	→ 111°	1900	↑	↷	△
3000	→ 111°	→ 111°	1900	↑	↷	△
GP 3.00°		1900		1.4 NM to RWY 12		RWY 12
TCH 40		6.1 NM		3.5 NM		1.4 NM
CATEGORY	A	B	C	D		
LPV DA	530-1 250 (300-1)			NA		
LNAV/VNAV DA	809-1½ 529 (600-1½)			NA		
LNAV MDA	780-1	500 (500-1)	780-1⅜	500 (500-1⅜) NA		
<input checked="" type="checkbox"/> CIRCLING	960-1	680 (700-1)	960-2	680 (700-2) NA		