

FORT WORTH, TEXAS

# RNAV (GPS) RWY 18

WAAS CH <b>71215</b> <b>W18A</b>	APCH CRS <b>177°</b>	Rwy Idg <b>11,999</b> TDZE <b>636</b> Arprt Elev <b>650</b>
--	-------------------------	---

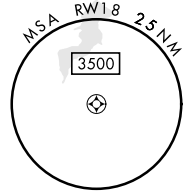
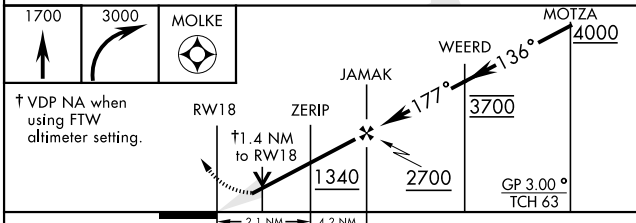
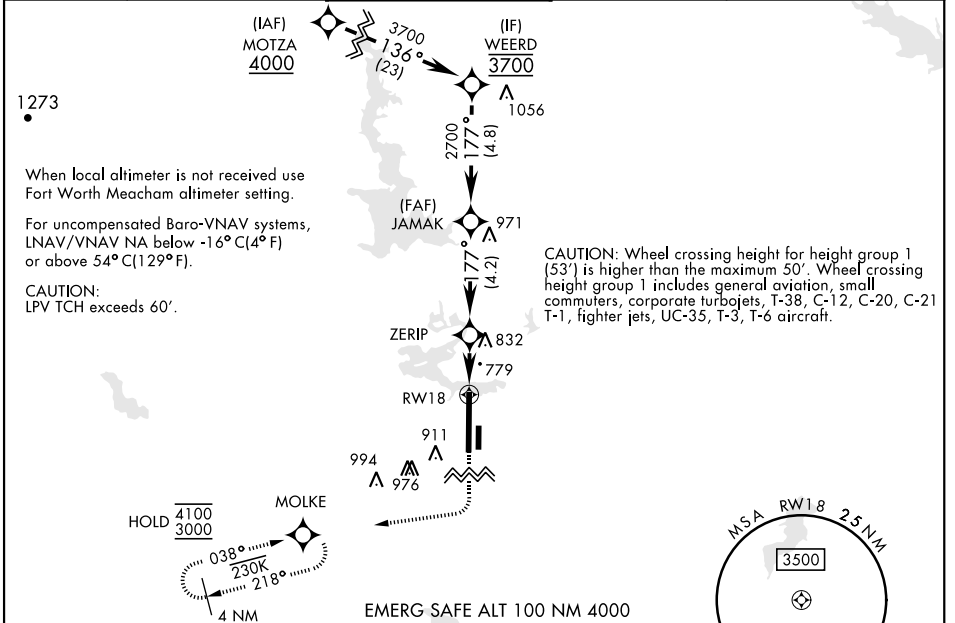
[UN]

FORT WORTH NAS JRB (CARSWELL FLD) (KNFW)

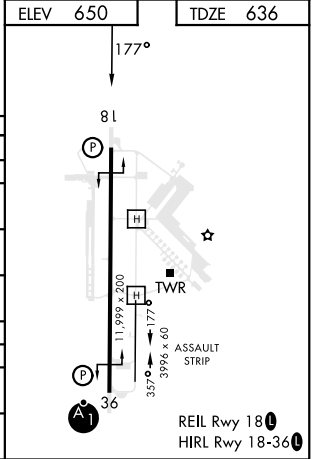
RNP APCH  
 \* Circling not authorized E of Rwy 18-36.  
 \*\* Baro VNAV NA when local altimeter not received.

MISSED APPROACH: Climb to 1700, then climbing right turn to 3000 direct MOLKE and hold.

ATIS* <b>351.675</b>	REGIONAL APP CON <b>125.8 257.95</b>	NAVY FORT WORTH TOWER* <b>120.950 269.325</b>	GND CON <b>121.675 279.575</b>	CLNC DEL <b>126.4 254.325</b>	ASR/PAR
-------------------------	---	--	-----------------------------------	----------------------------------	---------



CATEGORY	A	B	C	D
LPV DA	836-¾		200	(200-¾)
LNAV/VNAV DA**	1079-1⅓		443	(500-1⅓)
LNAV MDA	1120-1	484 (500-1)	1120-1⅓	484 (500-1⅓)
<b>C</b> CIRCLING*	1220-1 570 (600-1)	1320-1 670 (700-1)	1320-1¼ 670 (700-1¼)	1340-2¼ 690 (700-2¼)
FORT WORTH MEACHAM ALTIMETER				
LPV DA	856-¾		220	(300-¾)
LNAV MDA	1140-1	504 (500-1)	1140-1⅓	504 (500-1⅓)
<b>C</b> CIRCLING*	1240-1 590 (600-1)	1340-1 690 (700-1)	1340-2 690 (700-2)	1360-2¼ 710 (800-2¼)



FORT WORTH, TEXAS  
Amdt 2 18MAY23

32°46'N-97°26'W

FORT WORTH NAS JRB (CARSWELL FLD) (KNFW)

# RNAV (GPS) RWY 18

SC-2, 03 OCT 2024 to 31 OCT 2024

SC-2, 03 OCT 2024 to 31 OCT 2024