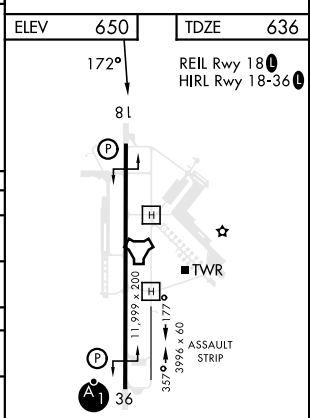
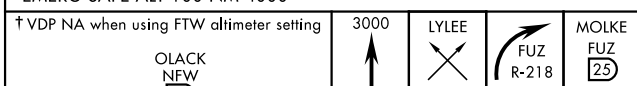
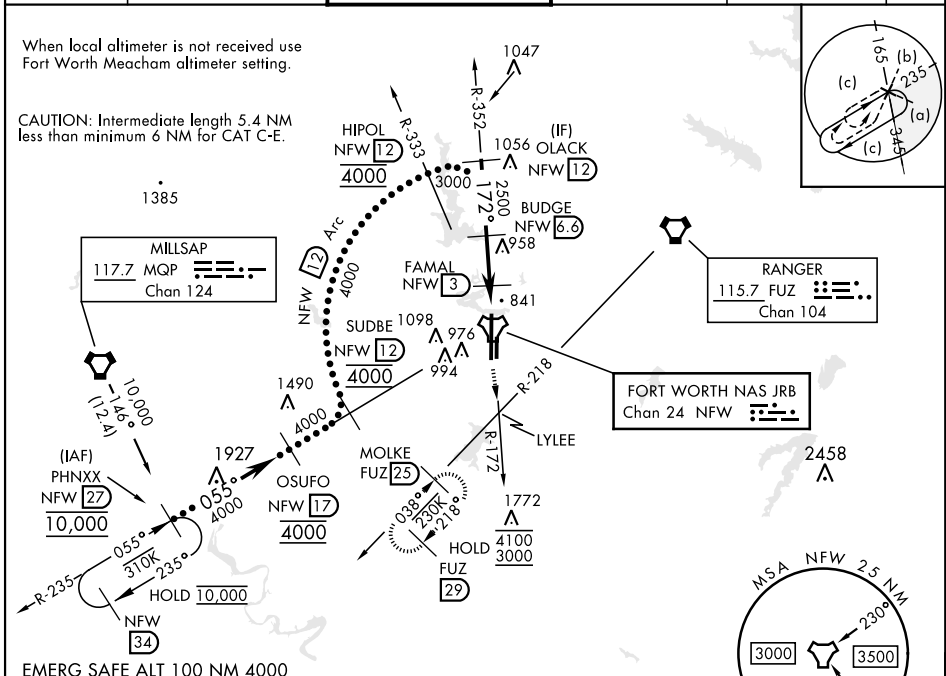


HI-TACAN Y RWY 18

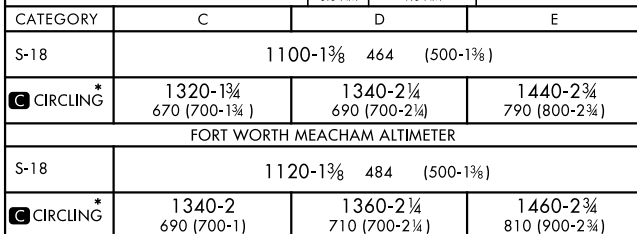
TACAN NFW Chan 24	APCH CRS 172°	Rwy Idg 11,999 TDZE 636 Arprt Elev 650	[USN]	FORT WORTH NAS JRB (CARSWELL FLD) (KNFW)
----------------------	------------------	--	-------	--

FUZ VORTAC or RADAR required.
 MISSED APPROACH: Climb to 3000 direct LYLEE to intercept FUZ VORTAC R-218 to MOLKE and hold.

ATIS* 351.675	LONE STAR APP CON 125.8 257.95	NAVY FORT WORTH TOWER* 120.950 269.325	GND CON 121.675 279.575	CLNC DEL 126.4 254.325	ASR/ PAR
-------------------------	--	--	-----------------------------------	----------------------------------	-------------



CATEGORY	C	D	E
S-18	1100-1 $\frac{3}{4}$	464 (500-1 $\frac{3}{4}$)	
CIRCLING*	1320-1 $\frac{3}{4}$ 670 (700-1 $\frac{3}{4}$)	1340-2 $\frac{1}{4}$ 690 (700-2 $\frac{1}{4}$)	1440-2 $\frac{3}{4}$ 790 (800-2 $\frac{3}{4}$)
FORT WORTH MEACHAM ALTIMETER			
S-18	1120-1 $\frac{3}{4}$	484 (500-1 $\frac{3}{4}$)	
CIRCLING*	1340-2 690 (700-1)	1360-2 $\frac{1}{4}$ 710 (700-2 $\frac{1}{4}$)	1460-2 $\frac{3}{4}$ 810 (900-2 $\frac{3}{4}$)



HI-TACAN Y RWY 18

SC-2, 31 OCT 2024 to 28 NOV 2024

SC-2, 31 OCT 2024 to 28 NOV 2024