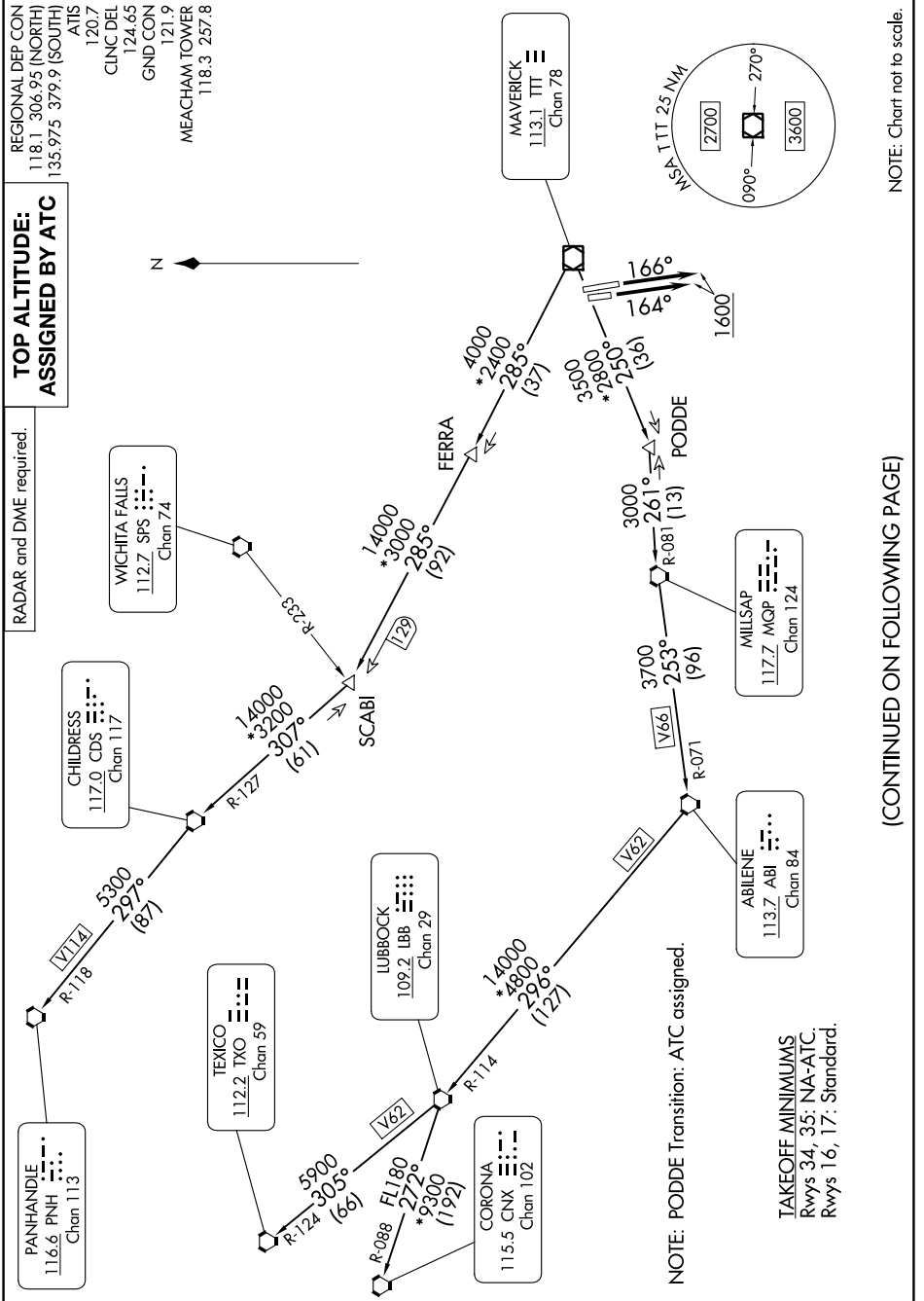


# WORTH ONE DEPARTURE



**TOP ALTITUDE:  
ASSIGNED BY ATC**

RADAR and DME required.

REGIONAL DEP CON  
118.1 306.95 (NORTH)  
135.975 379.9 (SOUTH)

ATIS  
120.7

CINC DEL  
124.65

GND CON  
121.9

MEACHAM TOWER  
118.3 257.8

NOTE: PODDE Transition: ATC assigned.

**TAKEOFF MINIMUMS**  
Rwys 34, 35: N/A-ATC.  
Rwys 16, 17: Standard.

NOTE: Chart not to scale.

(CONTINUED ON FOLLOWING PAGE)

# WORTH ONE DEPARTURE