

# SWABR ONE DEPARTURE (RNAV)

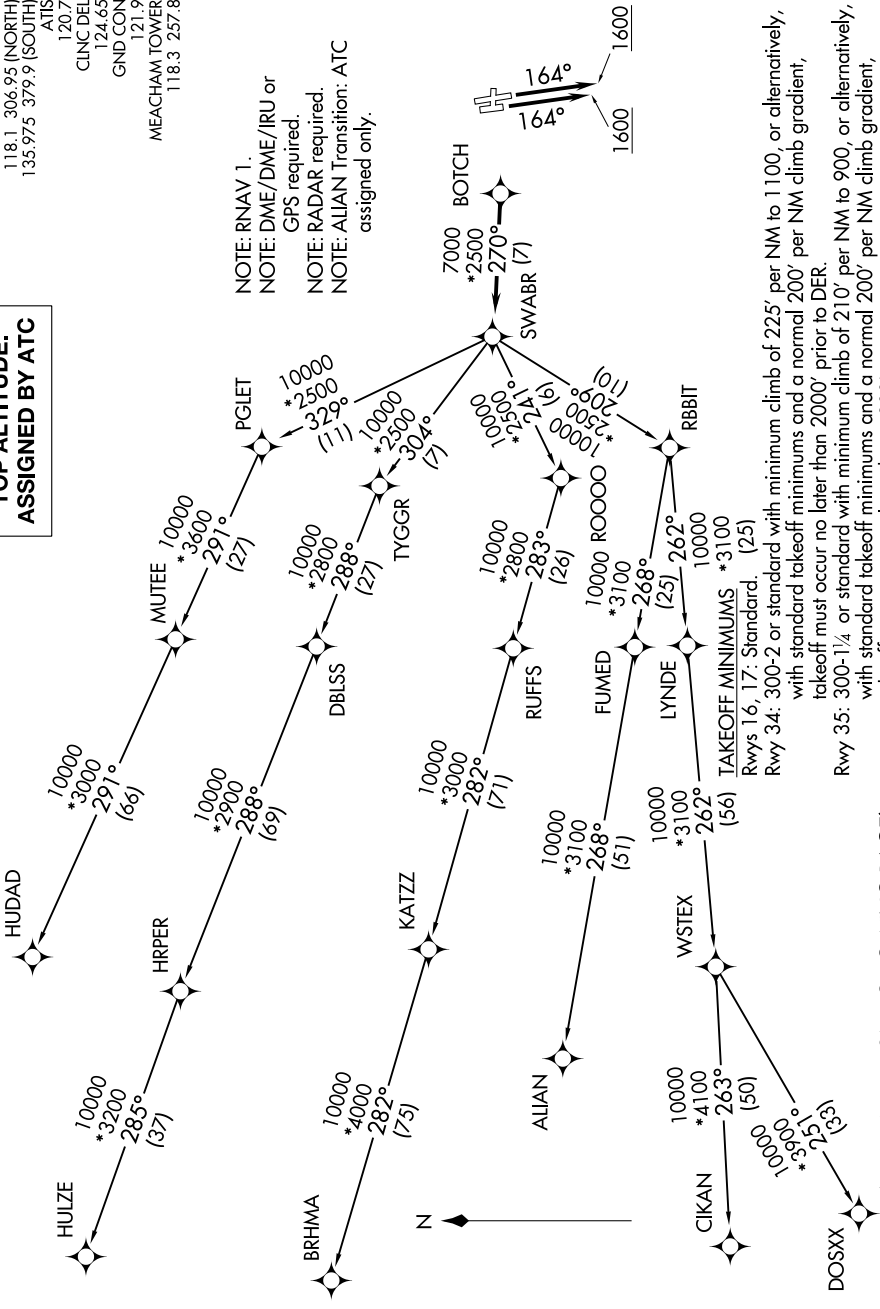
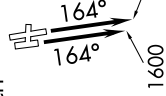
FORT WORTH, TEXAS

SC-2, 31 OCT 2024 to 28 NOV 2024

## TOP ALTITUDE: ASSIGNED BY ATC

LONE STAR DEP CON  
 118.1 306.95 (NORTH)  
 135.975 379.9 (SOUTH)  
 ATIS  
 120.7  
 CLNC DEL  
 124.65  
 GND CON  
 121.9  
 MEACHAM TOWER  
 118.3 257.8

NOTE: RNAV 1.  
 NOTE: DME/DME/IRU or  
 GPS required.  
 NOTE: RADAR required.  
 NOTE: ALIAN Transition: ATC  
 assigned only.



TAKEOFF MINIMUMS \*3100  
 Rwy 16, 17: Standard. (25)  
 Rwy 34: 300-2 or standard with minimum climb of 225' per NM to 1100, or alternatively,  
 with standard takeoff minimums and a normal 200' per NM climb gradient,  
 takeoff must occur no later than 2000' prior to DER.  
 Rwy 35: 300-1/4 or standard with minimum climb of 210' per NM to 900, or alternatively,  
 with standard takeoff minimums and a normal 200' per NM climb gradient,  
 takeoff must occur no later than 1200' prior to DER.

(CONTINUED ON FOLLOWING PAGE)

SC-2, 31 OCT 2024 to 28 NOV 2024