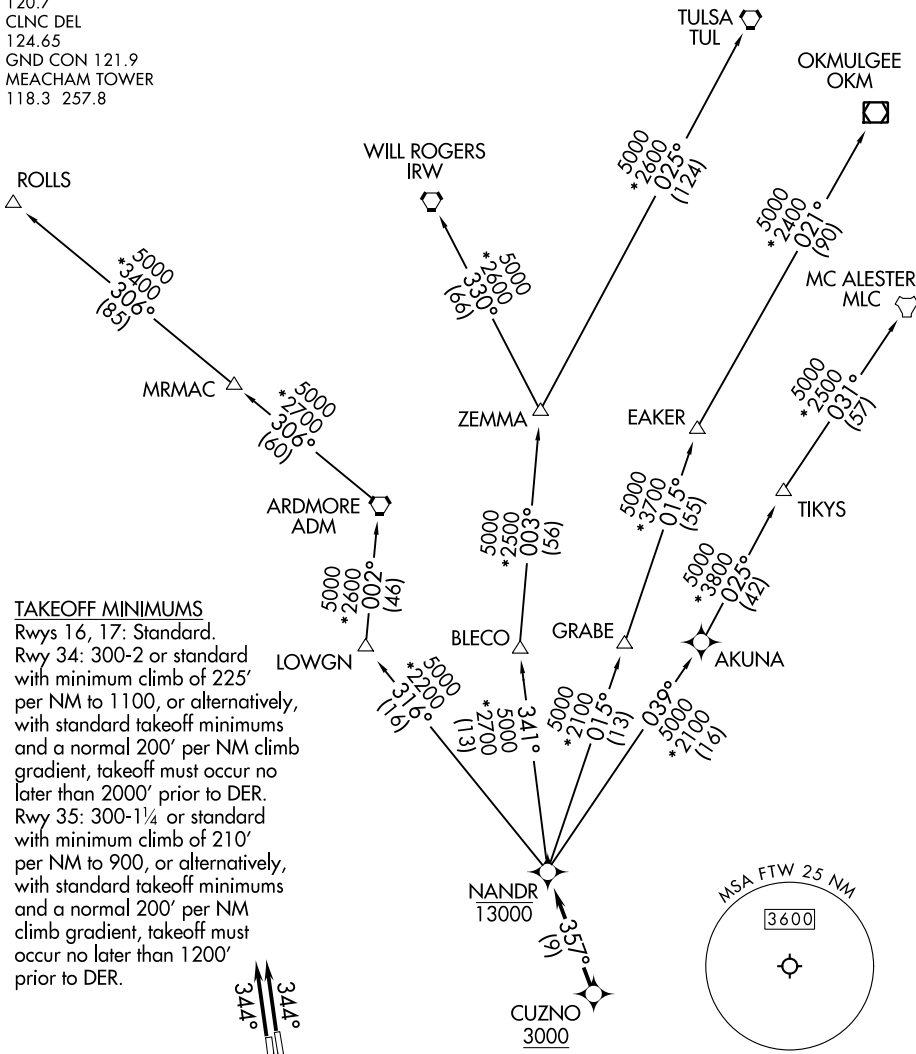


# NANDR TWO DEPARTURE (RNAV)

LONE STAR DEP CON  
 118.1 306.95 (Rwys 34, 35)  
 135.975 379.9 (Rwys 16, 17)  
 ATIS  
 120.7  
 CLNC DEL  
 124.65  
 GND CON 121.9  
 MEACHAM TOWER  
 118.3 257.8

RNAV 1 - DME/DME/IRU or GPS.  
 RADAR required.

**TOP ALTITUDE:  
 ASSIGNED BY ATC**



### TAKEOFF MINIMUMS

Rwys 16, 17: Standard.  
 Rwy 34: 300-2 or standard with minimum climb of 225' per NM to 1100, or alternatively, with standard takeoff minimums and a normal 200' per NM climb gradient, takeoff must occur no later than 2000' prior to DER.  
 Rwy 35: 300-1½ or standard with minimum climb of 210' per NM to 900, or alternatively, with standard takeoff minimums and a normal 200' per NM climb gradient, takeoff must occur no later than 1200' prior to DER.

NOTE: EAKER transition: For TUL terminal arrivals only.  
 NOTE: TULSA transition: For all aircraft overflying TUL VORTAC.  
 NOTE: Aircraft arriving to the Oklahoma City terminal area, file and expect the ZEMMA enroute transition.

NOTE: Chart not to scale.

(CONTINUED ON FOLLOWING PAGE)

# NANDR TWO DEPARTURE (RNAV)

(NANDR2.NANDR) 20APR23

SC-2, 31 OCT 2024 to 28 NOV 2024

SC-2, 31 OCT 2024 to 28 NOV 2024