

# KINGDOM FOUR DEPARTURE

(CONTINUED ON FOLLOWING PAGE)

SC-2, 31 OCT 2024 to 28 NOV 2024

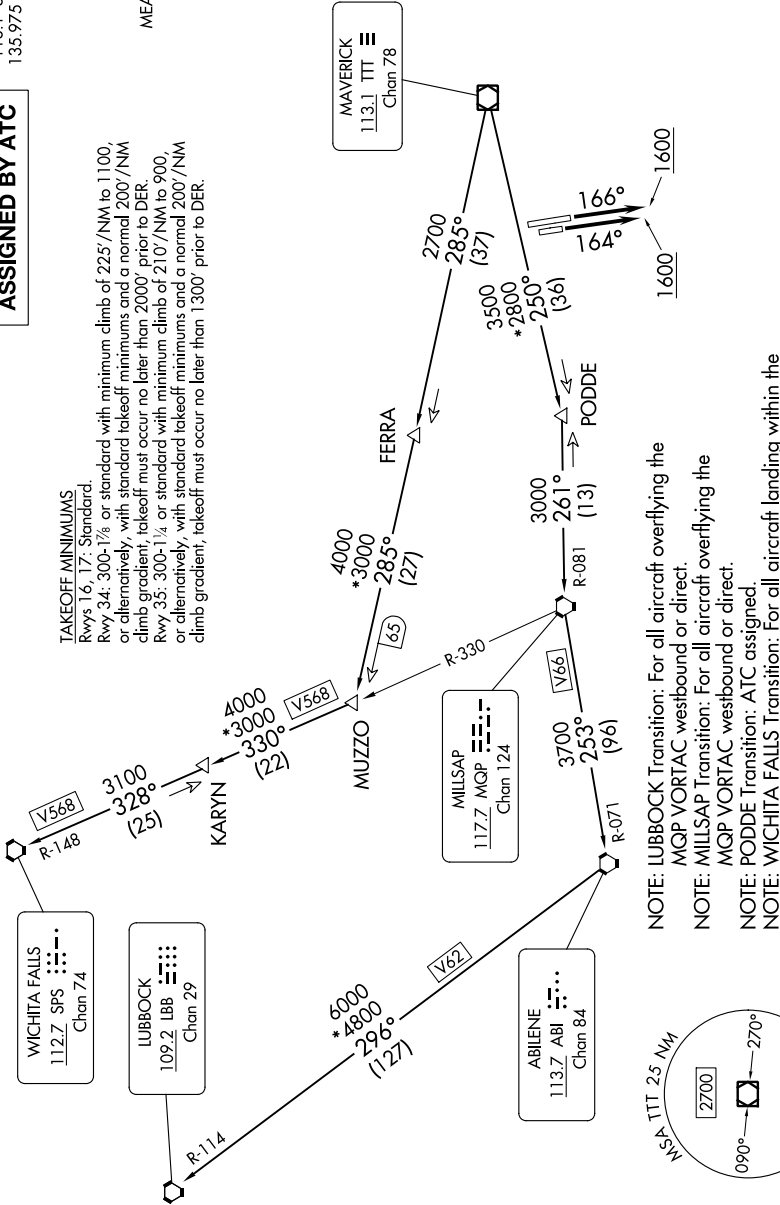
RADAR and DME required.

## TOP ALTITUDE: ASSIGNED BY ATC

LONE STAR DEP CON  
118.1 306.95 (NORTH)  
135.975 379.9 (SOUTH)  
ATIS  
120.7  
CINC DEL  
124.65  
GND CON  
121.9  
MEACHAM TOWER  
118.3 257.8

### TAKEOFF MINIMUMS

Rwys 16, 17: Standard.  
Rwy 34: 300-1/4 or standard with minimum climb of 225'/NM to 1100, or alternatively, with standard takeoff minimums and a normal 200'/NM climb gradient, takeoff must occur no later than 2000' prior to DER.  
Rwy 35: 300-1/4 or standard with minimum climb of 210'/NM to 900, or alternatively, with standard takeoff minimums and a normal 200'/NM climb gradient, takeoff must occur no later than 1300' prior to DER.



- NOTE: LUBBOCK Transition: For all aircraft overlying the MQP VORTAC westbound or direct.
- NOTE: MILLSAP Transition: For all aircraft overlying the MQP VORTAC westbound or direct.
- NOTE: PODDE Transition: ATC assigned.
- NOTE: WICHITA FALLS Transition: For all aircraft landing within the Wichita Falls terminal area or overlying the SPS VORTAC.
- NOTE: For all aircraft requesting 17000 and below.

NOTE: Chart not to scale.

SC-2, 31 OCT 2024 to 28 NOV 2024

# KINGDOM FOUR DEPARTURE