

# GARLAND FIVE DEPARTURE

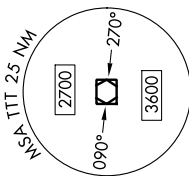
FORT WORTH, TEXAS

SC-2, 31 OCT 2024 to 28 NOV 2024

## TOP ALTITUDE: ASSIGNED BY ATC

LONE STAR DEP CON  
118.1 306.95 (North)  
135.975 379.9 (South)  
ATIS  
120.7  
CLINC DEL  
124.65  
GND CON  
121.9  
MEACHAM TOWER  
118.3 257.8

NOTE: SOLDO Transition: ATC assigned.



RADAR and DME required.

TEXARKANA  
116.3 TKX  
Chan 110

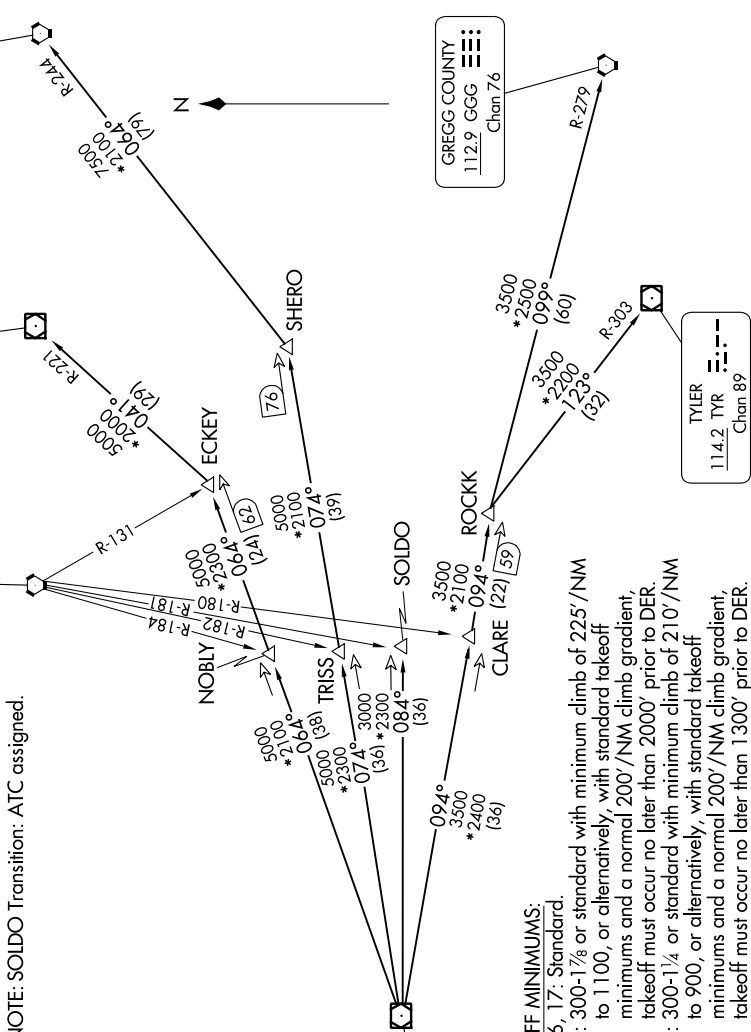
PARIS  
113.6 PRX  
Chan 83

BONHAM  
114.6 BYP  
Chan 93

MAVERICK  
113.1 TTT  
Chan 78

GREGG COUNTY  
112.9 GGG  
Chan 76

TYLER  
114.2 TYR  
Chan 89

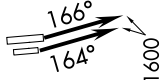


### TAKEOFF MINIMUMS:

Rwys 16, 17: Standard.

Rwy 34: 300-1<sup>3</sup>/<sub>4</sub> or standard with minimum climb of 225'/NM to 1100, or alternatively, with standard takeoff minimums and a normal 200'/NM climb gradient, takeoff must occur no later than 2000' prior to DER.

Rwy 35: 300-1<sup>3</sup>/<sub>4</sub> or standard with minimum climb of 210'/NM to 900, or alternatively, with standard takeoff minimums and a normal 200'/NM climb gradient, takeoff must occur no later than 1300' prior to DER.



NOTE: Chart not to scale.

(CONTINUED ON FOLLOWING PAGE)

# GARLAND FIVE DEPARTURE

FORT WORTH, TEXAS

SC-2, 31 OCT 2024 to 28 NOV 2024