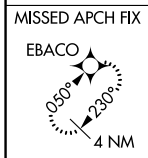
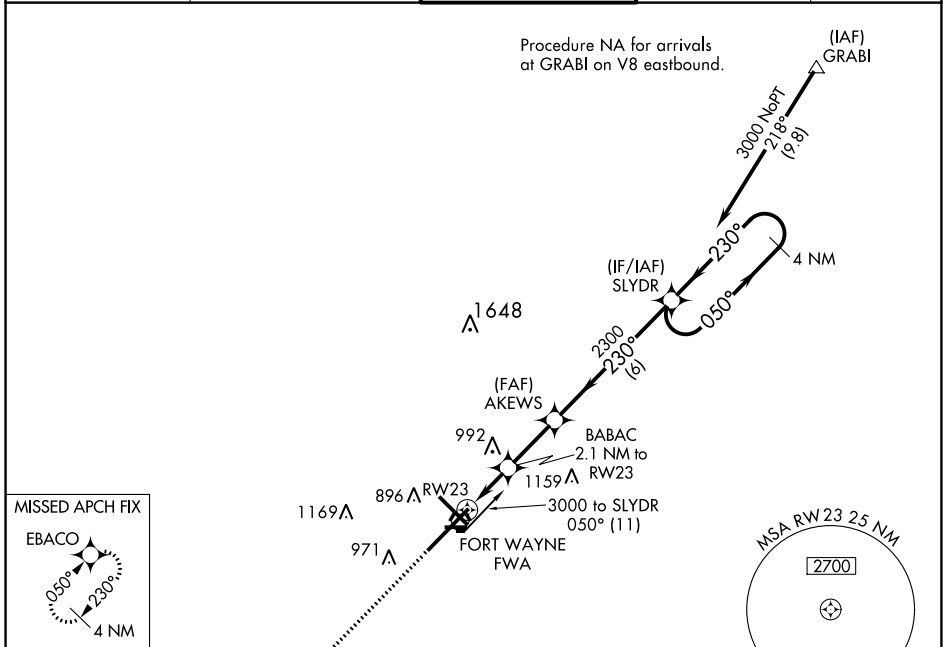


WAAS CH 69599 W23A	APP CRS 230°	Rwy Idg 11981 TDZE 799 Apt Elev 815
--	------------------------	--

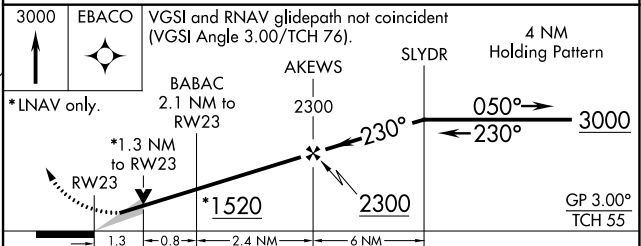
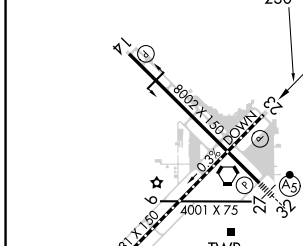
RNAV (GPS) RWY 23

FORT WAYNE INTL (FWA)

For uncompensated Baro-VNAV systems, LNAV/VNAV NA below -16°C (4°F) or above 47°C (116°F). DME/DME RNP-0.3 NA.		MISSED APPROACH: Climb to 3000 direct EBACO and hold.		
ATIS 121.25 360.825	FORT WAYNE APP CON 127.2 284.6	FORT WAYNE TOWER 119.1 269.325	GND CON 121.9 348.6	CLNC DEL 124.75



ELEV 815	D	TDZE 799
----------	----------	----------



CATEGORY	A	B	C	D	E
LPV DA	1053/40		254 (300-¾)		
LNAV/VNAV DA	1230-1⅜		431 (500-1⅝)		
LNAV MDA	1300/55 501 (500-1)		1300-1⅜ 501 (500-1⅝)		
C CIRCLING	1300-1 485 (500-1)		1420-1¾ 605 (700-1¾)	1520-2¼ 705 (800-2¼)	1520-2½ 705 (800-2½)

TDZ/CL Rwy 5
REIL Rwy 14 and 23
HIRL Rwy 5-23 and 14-32

EC-2, 08 AUG 2024 to 05 SEP 2024

EC-2, 08 AUG 2024 to 05 SEP 2024