

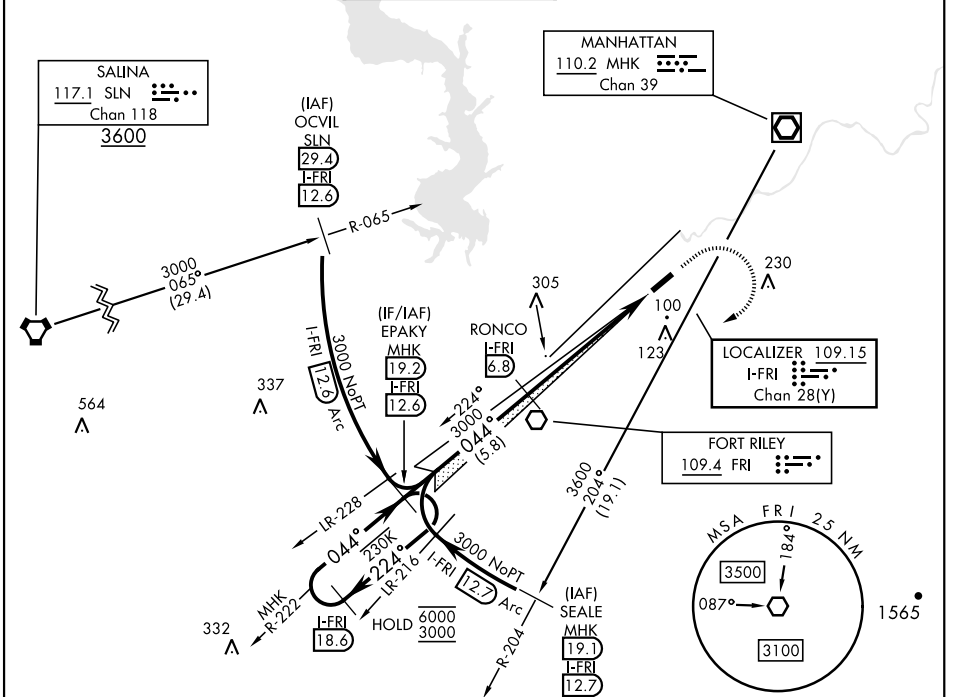
FORT RILEY, KANSAS

ILS or LOC RWY 4

LOC/DME I-FRI 109.15 Chan 28(Y)	APCH CRS 044°	Rwy Ldg THRE 1065 Arpt Elev 1066	[USA]	MARSHALL AAF (KFRI)
---	-------------------------	--	-------	---------------------

RADAR required.	ODALS	MISSED APPROACH: Climb to 1500 then climbing right turn to 3000 heading 230° expect radar vectors to EPAKY and hold.
<p>▼ * Circling not authorized NW of Rwy 4-22. Rwy 4 helicopter visibility reduction below 3/4 mile not authorized.</p>		

ATIS ★ 121.025	APP CON 121.25 254.35	TOWER ★ 126.2 (CTAF) 0 248.65	GND CON 140.20 229.4	CLNC DEL 119.65	ASR/PAR
--------------------------	---------------------------------	--	--------------------------------	---------------------------	---------



ELEV	1066	THRE	1065
------	------	------	------

EMERG SAFE ALT 100 NM 4000

CATEGORY	A	B	C	D
S-ILS 4	1341-1	276	(300-1)	
S-LOC 4	1800-1	735 (800-1)	1800-2 735 (800-2)	
CIRCLING*	1800-1	734 (800-1)	1800-2 734 (800-2)	1900-2 834 (900-2 3/4)

HIRL Rwy 4-22

FORT RILEY, KANSAS 39° 03' N - 96° 46' E MARSHALL AAF (KFRI)

Orig 20FEB25

ILS or LOC RWY 4

NC-2, 20 FEB 2025 to 20 MAR 2025

NC-2, 20 FEB 2025 to 20 MAR 2025