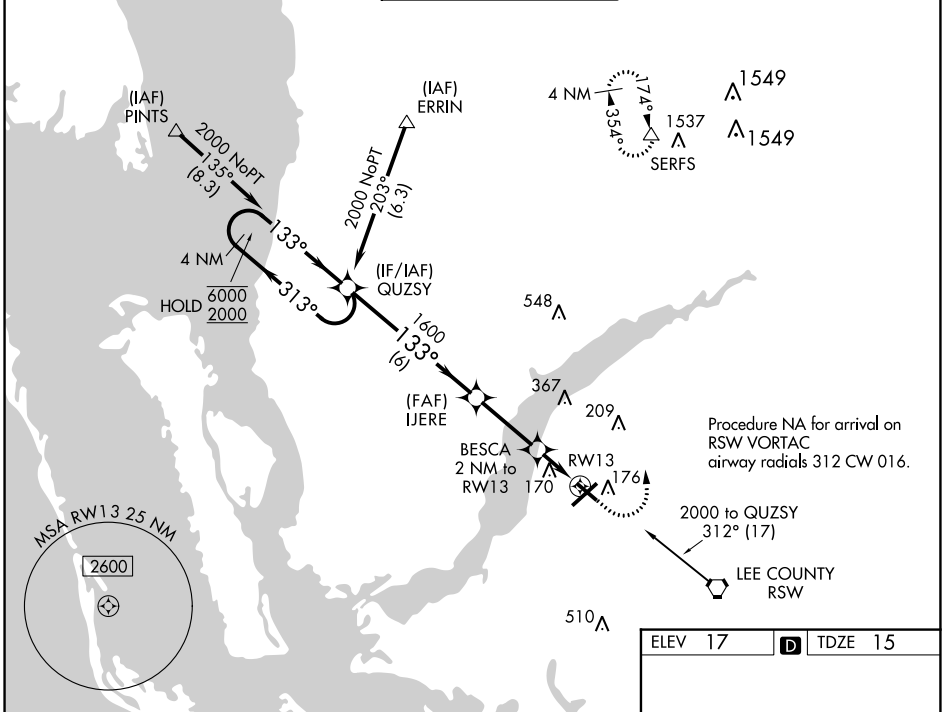


WAAS CH 73024 W13A	APP CRS 133°	Rwy Idg 4296 TDZE 15 Apt Elev 17
--	------------------------	---

RNAV (GPS) RWY 13

PAGE FLD (FMYY)

RNP APCH. ▼ When Circling to Rwy 31 at night, operational VGSI required, remain on or above VGSI glidepath until threshold. For uncompensated Baro-VNAV systems, LNAV/VNAV NA below -15°C or above 54°C.		MISSED APPROACH: Climb to 500 then climbing left turn to 2600 direct SERFS and hold.		
ATIS 123.725	FORT MYERS APP CON ★ 125.15 306.2 (Rwys 5, 13) 126.8 306.2 (Rwys 23, 31)	PAGE TOWER ★ 119.0 (CTAF) 306.95	GND CON 121.7	CLNC DEL 121.7



SE-3, 31 OCT 2024 to 28 NOV 2024

SE-3, 31 OCT 2024 to 28 NOV 2024

ELEV 17	D	TDZE 15
---------	---	---------

REIL Rwys 5, 13, 23 and 31
MIRL Rwy 5-23 and 13-31

CATEGORY	A	B	C	D
LPV DA	265-1		250 (300-1)	
LNAV/VNAV DA	480-1 $\frac{5}{8}$		465 (500-1 $\frac{5}{8}$)	
LNAV MDA	480-1 465 (500-1)		480-1 $\frac{5}{8}$ 465 (500-1 $\frac{5}{8}$)	
C CIRCLING	540-1 523 (600-1)		600-1 $\frac{1}{2}$ 583 (600-1 $\frac{1}{2}$) 680-2 663 (700-2)	