

WILDCAT SIX DEPARTURE

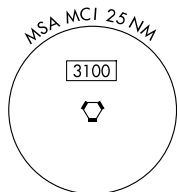
AL-152 (FAA)

SHERMAN AAF (F'L V)
FORT LEAVENWORTH, KANSAS

KANSAS CITY DEP CON
124.7 284.7

RADAR required.

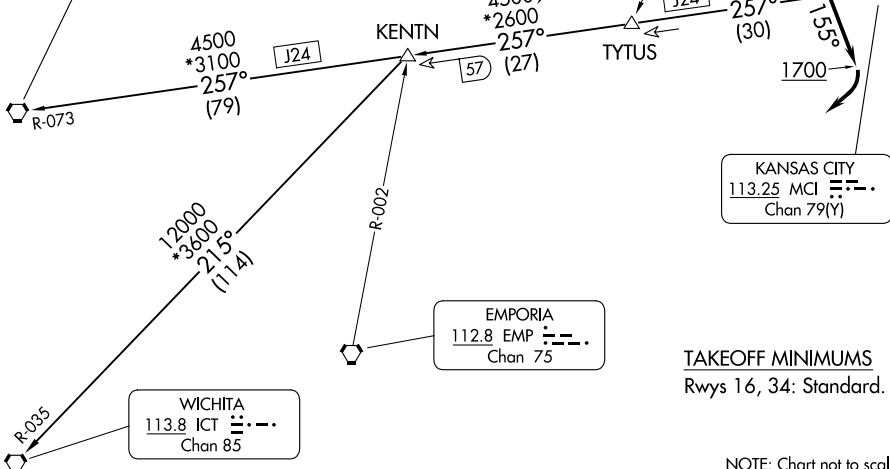
TOP ALTITUDE:
10000



SALINA
117.1 SLN ---
Chan 118

ST JOSEPH
115.5 STJ ---
Chan 102

*3100 when using Salina
or Wichita Transition.



TAKEOFF MINIMUMS
Rwys 16, 34: Standard.

NOTE: Chart not to scale.

DEPARTURE ROUTE DESCRIPTION

TAKEOFF RUNWAY 16: Climb on heading 155° to 1700 before turning southwest, thence

. . . climb on assigned heading for RADAR vectors to appropriate route. Maintain 10000, expect filed altitude 10 minutes after departure.

TAKEOFF RUNWAY 34: Climb on assigned heading for RADAR vectors to appropriate route. Maintain 10000, expect filed altitude 10 minutes after departure.

KENTN TRANSITION (WLDCT6.KENTN): From over MCI VORTAC on MCI R-257 to KENTN.

SALINA TRANSITION (WLDCT6.SLN): From over MCI VORTAC on MCI R-257 and SLN R-073 to SLN VORTAC.

WICHITA TRANSITION (WLDCT6.ICT): From over MCI VORTAC on MCI R-257 to KENTN, then on ICT R-035 to ICT VORTAC.

WILDCAT SIX DEPARTURE