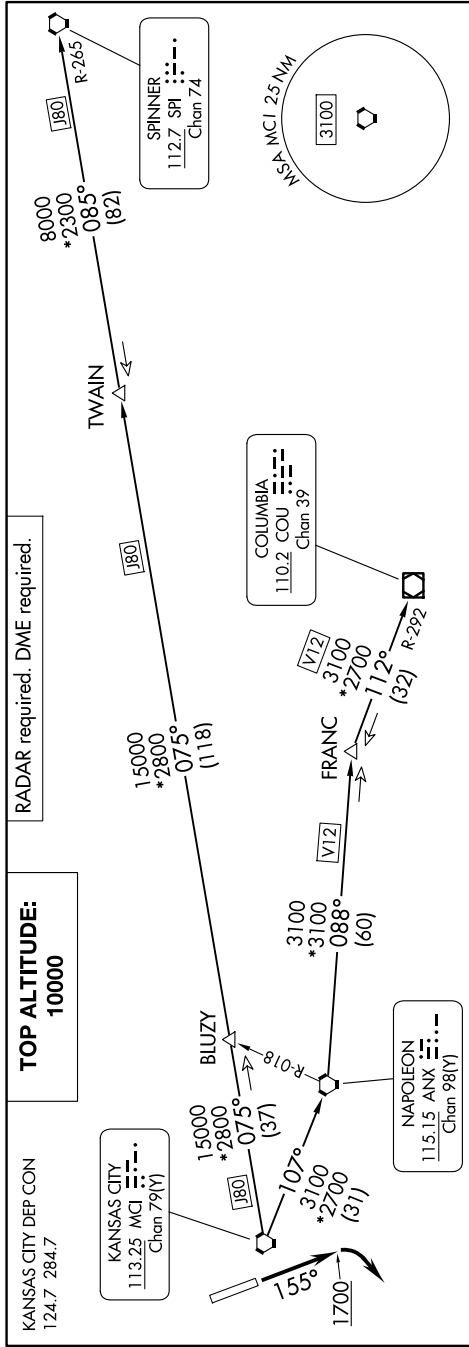


# LAKES FIVE DEPARTURE

NC-2, 23 JAN 2025 to 20 FEB 2025



**DEPARTURE ROUTE DESCRIPTION**

**TAKEOFF RUNWAY 16:** Climb on heading 155° to 1700 before turning southwest, thence . . . climb on assigned heading for RADAR vectors to appropriate route. Maintain 10000 or as assigned by ATC, expect filed altitude 10 minutes after departure.

**TAKEOFF RUNWAY 34:** Climb on assigned heading for RADAR vectors to appropriate route. Maintain 10000 or as assigned by ATC, expect filed altitude 10 minutes after departure.

**COLUMBIA TRANSITION (LAKES5.COU):** From over MCI VORTAC on MCI R-107 to ANX VORTAC, then on ANX R-088 and COU R-292 to COU VOR/DME.

**FRANC TRANSITION (LAKES5.FRANC):** From over MCI VORTAC on MCI R-107 to ANX VORTAC, then on ANX R-088 to FRANC.

**SPINNER TRANSITION (LAKES5.SPI):** From over MCI VORTAC on MCI R-075 and SPI R-265 to TWAIN, then on SPI R-265 to SPI VORTAC.

**TWAIN TRANSITION (LAKES5.TWAIN):** From over MCI VORTAC on MCI R-075 and SPI R-265 to TWAIN.

**KANSAS CITY DEP CON**  
124.7 284.7

**TOP ALTITUDE:**  
10000

**RADAR required. DME required.**

NC-2, 23 JAN 2025 to 20 FEB 2025

NOTE: Chart not to scale.