

VOR/DME RWY 15

VOR/DME FTK 109.6 Chan 33	APCH CRS 146°	Rwy Ildg TDZE 4853 754 Arprt Elev 754
---	-------------------------	---

AL-151 [USA]

GODMAN AAF (KFTK)

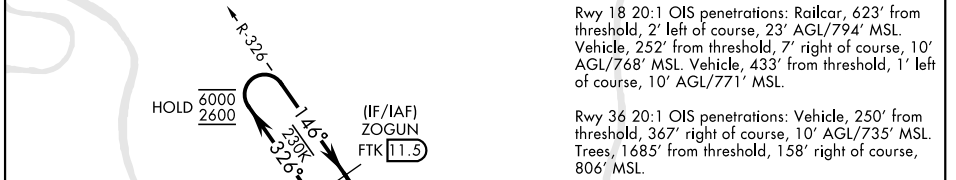
▼ * NA at night.
Visibility reduction by helicopters NA.

MISSED APPROACH: Climb to 1300, then climbing right turn to 2600 on heading 356° and FTK VOR/DME R-326 to ZOGUN INT/FTK 11.5 DME and hold.

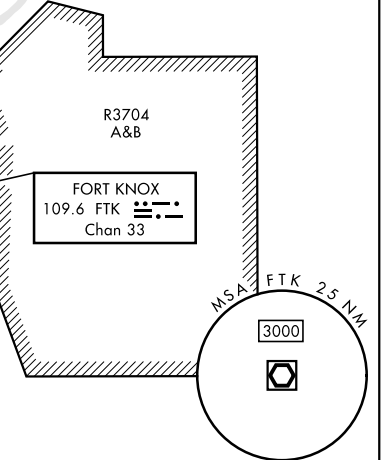
ATIS 109.6	LOUISVILLE APP CON 132.075 327.0	TOWER ★ 133.35 (CTAF) 0	GND CON 121.9 239.3
----------------------	--	-----------------------------------	-------------------------------

** Circling NA E of Rwy 18-36. When circling to Rwy 36 at night, operational VGSi required, remain on or above VGSi glidepath until threshold.

Rwy 15 20:1 OIS penetration: Trees, 2107' from threshold, on course, 853' MSL.



Circling to Rwy 18 at night:
Operational VGSi required when train is on the track North and East of Rwy 18 (control tower will advise when train is on track) or when tower is closed. When train is on track or tower is closed remain on or above VGSi glidepath until thld.



SE-1, 05 SEP 2024 to 03 OCT 2024

SE-1, 05 SEP 2024 to 03 OCT 2024

ELEV 754	TDZE 754
----------	----------

HIRL Rwy 18-36 (P) 36
MIRL Rwy 15-33
REIL Rwy 15
REIL Rwy 18 (P)

FAF to MAP 4.6 NM

Knots	60	90	120	150	180
Min:Sec	4:36	3:04	2:18	1:50	1:32

	1027			
	ZOGUN 11.5			
	One Minute Holding Pattern			
	2600	146°	326°	
		146°		
			2400	
				GODTY 5
				VOR/DME
				JOKEB 0.4
				1.6
				3.30°
				TCH 45
				4.6 NM
CATEGORY	A	B	C	D
S-15*	1240-1 486 (500-1)		1240-1 $\frac{3}{8}$ 486 (500-1 $\frac{3}{8}$)	
CIRCLING**	1340-1 586 (600-1)		1340-1 $\frac{1}{2}$ 586 (600-1 $\frac{1}{2}$)	1340-2 586 (600-2)

FORT KNOX, KENTUCKY 37° 54' N-85° 58' W GODMAN AAF (KFTK)

Amtd 2 13JUL23

VOR/DME RWY 15