

RNAV (GPS) RWY 36

APCH CRS	Rwy ldg	5184
015°	TDZE	740
	Arprt Elev	754

AL-151 [USA]

GODMAN AAF (KFTK)

RNP APCH - GPS

ODALS

MISSED APPROACH: Climbing left turn to 2500 direct HONAL and hold.

▼ * Straight-in Rwy 36 at night, operational VGSI required, remain on or above VGSI glidepath until threshold. When ALS inop, increase CAT CD vis to 1½ miles. Helicopter visibility reduction below 1 mile NA.

ATIS
109.6

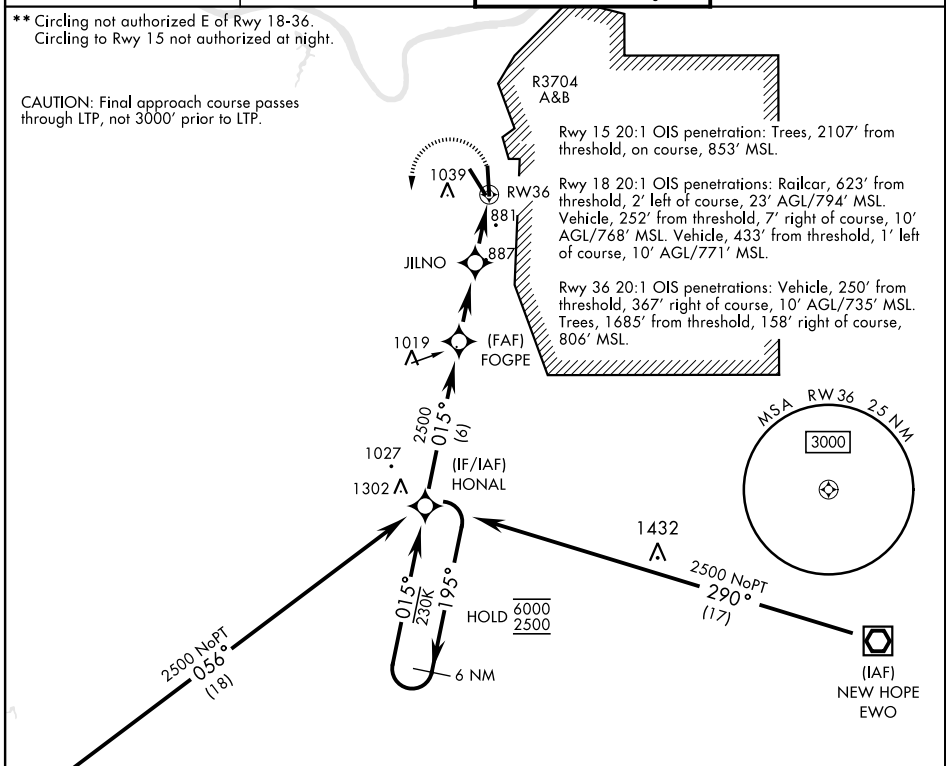
LOUISVILLE APP CON
132.075 327.0

TOWER ★
133.35 (CTAF) 0

GND CON
121.9 239.3

** Circling not authorized E of Rwy 18-36.
Circling to Rwy 15 not authorized at night.

CAUTION: Final approach course passes through LTP, not 3000' prior to LTP.



SE-1, 05 SEP 2024 to 03 OCT 2024

SE-1, 05 SEP 2024 to 03 OCT 2024

	ELEV	754	TDZE	740
	HIRL Rwy 18-36	0		
	MIRL Rwy 15-33			
	REIL Rwy 15			
	REIL Rwy 18	0		

6 NM Holding Pattern	HONAL	FOGPE	JILNO	RWY 36
6000 / 2500	195° / 015°	2500	1580	
3.00' TCH 55				
		2.9 NM	2.5 NM	

CATEGORY	A	B	C	D
LNAV MDA*	1240-1	500 (500-1)	1240-1¼	500 (500-1¼)
CIRCLING**	1340-1	586 (600-1)	1340-1½ 586 (600-1½)	1340-2 586 (600-2)

RNAV (GPS) RWY 36