

FORT KNOX, KENTUCKY

# ILS or LOC/DME RWY 18

|  |                         |  |
|--|-------------------------|--|
| LOC/DME I-FTK<br><b>108.95</b><br>Chan <b>26 (Y)</b> | APCH CRS<br><b>180°</b> | Rwy Idg<br>THRE<br>Arprt Elev<br><b>5184</b><br><b>754</b><br><b>754</b> |
|--|-------------------------|--|

AL-151 [USA]

GODMAN AAF (KF TK)

▼ \*NA when train is on track north and east of Rwy 18, control twr will advise when train is on track. NA when control twr closed.  
\*\* When ALS inop, increase CAT CD vis to 1½ miles.

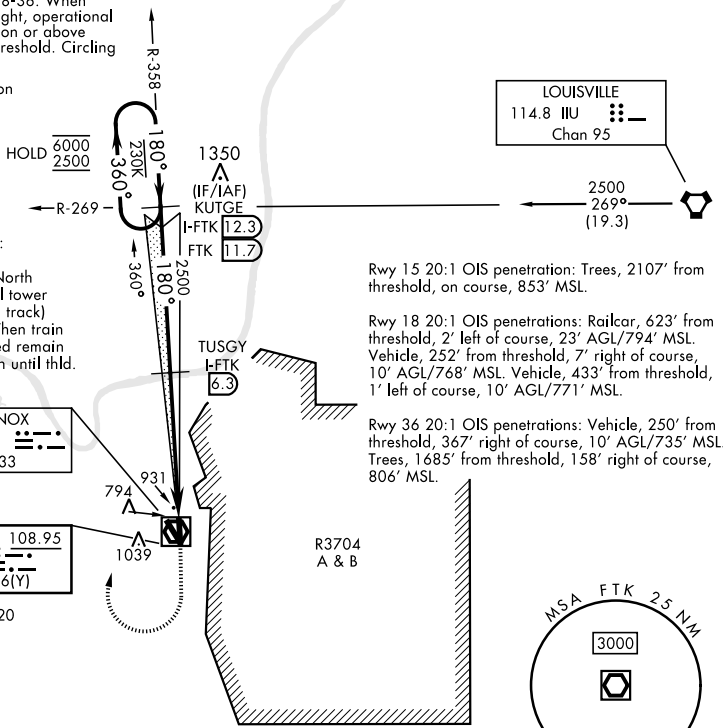


MISSED APPROACH: Climb to 1300, then climbing right turn to 2500 on heading 030° to intercept FTK VOR/DME R-358 to KUTGE INT/I-FTK 12.3 DME and hold.

|                      |  |                                   |                               |
|----------------------|--|-----------------------------------|-------------------------------|
| ATIS<br><b>109.6</b> | LOUISVILLE APP CON<br><b>132.075 327.0</b> | TOWER ★<br><b>133.35 (CTAF) 0</b> | GND CON<br><b>121.9 239.3</b> |
|----------------------|--|-----------------------------------|-------------------------------|

\*\*\* Circling NA E of Rwy 18-36. When circling to Rwy 36 at night, operational VGSI required, remain on or above VGSI Glidepath until threshold. Circling to Rwy 15 NA at night.

Helicopter visibility reduction below 1 mile NA.



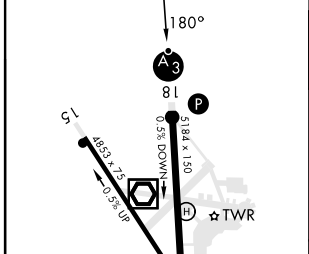
LOC Night landing Rwy 18: Operational VGSI required when train is on the track North and East of Rwy 18 (control tower will advise when train is on track) or when tower is closed. When train is on track or tower is closed remain on or above VGSI glidepath until thld.

Rwy 15 20:1 OIS penetration: Trees, 2107' from threshold, on course, 853' MSL.  
Rwy 18 20:1 OIS penetrations: Railcar, 623' from threshold, 2' left of course, 23' AGL/794' MSL. Vehicle, 252' from threshold, 7' right of course, 10' AGL/768' MSL. Vehicle, 433' from threshold, 1' left of course, 10' AGL/771' MSL.  
Rwy 36 20:1 OIS penetrations: Vehicle, 250' from threshold, 367' right of course, 10' AGL/735' MSL. Trees, 1685' from threshold, 158' right of course, 806' MSL.

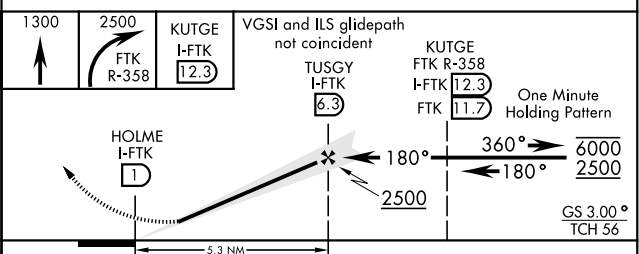
SE-1, 05 SEP 2024 to 03 OCT 2024

SE-1, 05 SEP 2024 to 03 OCT 2024

|                 |                 |
|-----------------|-----------------|
| ELEV <b>754</b> | THRE <b>754</b> |
|-----------------|-----------------|



- HIRL Rwy 18-36
- MIRL Rwy 15-33
- REIL Rwy 15
- REIL Rwy 18



| CATEGORY       | A      | B           | C                       | D                     |
|----------------|--------|-------------|-------------------------|-----------------------|
| S-ILS 18 *     |        | 1005-1      | 251 (300-1)             |                       |
| S-LOC 18 **    |        | 1160-1      | 406 (500-1)             |                       |
| ⓐ CIRCLING *** | 1340-1 | 586 (600-1) | 1340-1½<br>586 (600-1½) | 1340-2<br>586 (600-2) |

FORT KNOX, KENTUCKY  
Amdt 1 13JUL23

37°54'N-85°58'W

GODMAN AAF (KF TK)

# ILS or LOC/DME RWY 18