

WRIGHTSTOWN, NEW JERSEY

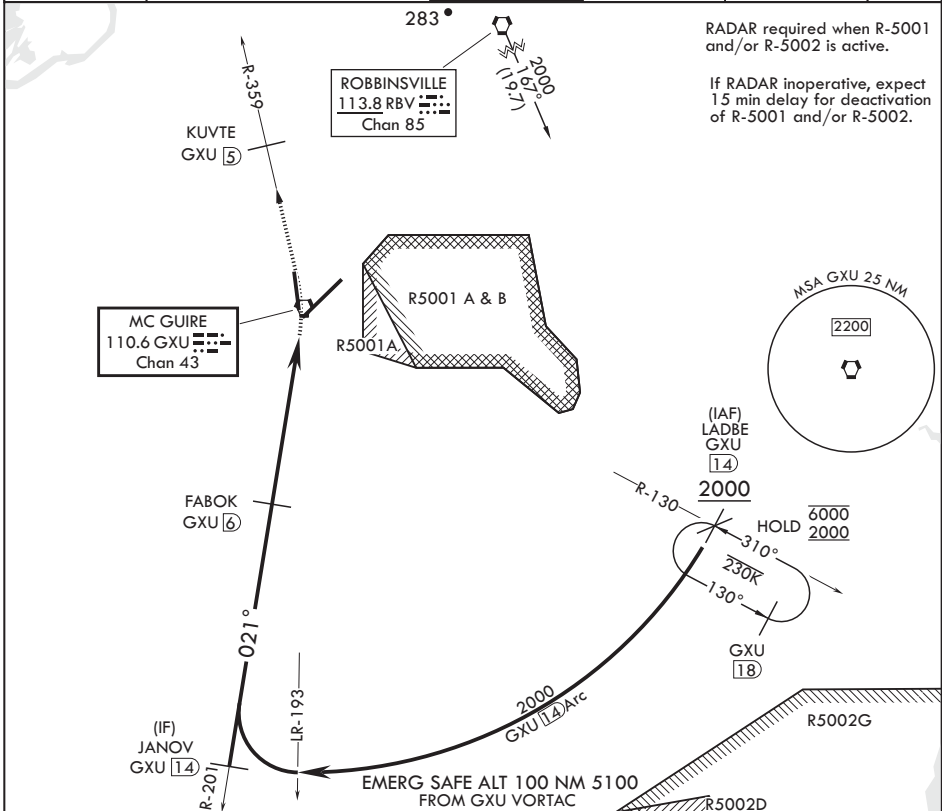
VOR/DME or TACAN RWY 36

VORTAC GXU 110.6 Chan 43	APCH CRS 021°	Rwy Idg 7126	TDZE 129
		Arprt Elev 141	

AL-150 (USAF)
MC GUIRE FIELD (JOINT BASE MC GUIRE DIX LAKEHURST) (KWRI)

⚠ * Circling NA SE of Rwy 24 and E of Rwy 36 when R-5001 A/B Active. MISSED APPROACH: Climb to 2000 via GXU R-359 to KUVTE, expect further clearance with ATC.

ATIS 110.6 270.1	MC GUIRE APP CON/DEP CON 126.475 363.8	TOWER 118.65 255.6	GND CON 121.8 275.8	CLNC DEL 135.2 335.8	PAR
---------------------	---	-----------------------	------------------------	-------------------------	-----

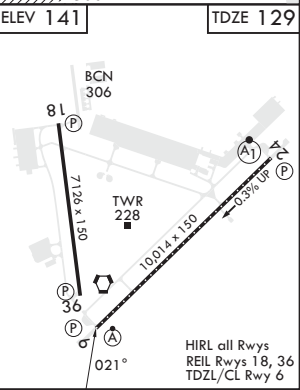


RADAR required when R-5001 and/or R-5002 is active.
If RADAR inoperative, expect 15 min delay for deactivation of R-5001 and/or R-5002.

NE-2, 31 OCT 2024 to 28 NOV 2024

NE-2, 31 OCT 2024 to 28 NOV 2024

LADBE GXU R-130 14 RBV 19.7	JANOV GXU R-201 14	FABOK GXU 6	GXU R-359 2000	KUVTE GXU 5	ELEV 141	TDZE 129
2000		021°	2000	2.92° ≥ TCH 46	5.1 NM	0.8
GXU R-14 Arc						
GXU R-14 Arc						
CATEGORY	A	B	C	D	E	
S-36	600-1	471 (500-1)	600-1½	471 (500-1½)		
Ⓢ CIRCLING*	680-1	539 (600-1)	700-1½ 559 (600-1½)	700-2 559 (600-2)	1200-3 1059 (1100-3)	



WRIGHTSTOWN, NEW JERSEY

MC GUIRE FIELD (JOINT BASE MC GUIRE DIX LAKEHURST) (KWRI)

Amdt 7 18MAY23

40°01'N - 74°36'W

VOR/DME or TACAN RWY 36