

WRIGHTSTOWN, NEW JERSEY

# RNAV (GPS) RWY 6

WAAS CH 91356 W06A	APCH CRS 058°	Rwy ldg TDZE Arprt Elev	10,014 131 141
--------------------------	------------------	-------------------------------	----------------------

AL-150 (USAF)  
MC GUIRE FIELD (JOINT BASE MC GUIRE DIX LAKEHURST) (KWRI)

MISSED APPROACH: Climb to 2000 direct DAYYO and hold.	ALSF-2

ATIS 110.6 270.1	MC GUIRE APP CON/DEP CON 126.475 363.8	TOWER 118.65 255.6	GND CON 121.8 275.8	CLNC DEL 135.2 335.8	PAR
---------------------	---	-----------------------	------------------------	-------------------------	-----

\*\*\*\* Circling NA SE of Rwy 24 and E of Rwy 36 when R-5001 A/B Active.

DME/DME RNP-0.3 NA

For uncompensated Baro-VNAV systems, Procedure NA below -15°C (5°F) or above 52°C (126°F).

RADAR required when R-5001 is active.

RADAR required for holding above 2000 and/or > 230 KIAS.

If RADAR inoperative, expect 15 min delay for deactivation of R-5001.

Alternate Missed Approach instructions: Climb to 2000 direct DAYYO, expect further clearance from ATC.

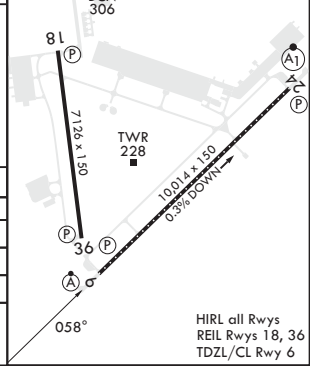
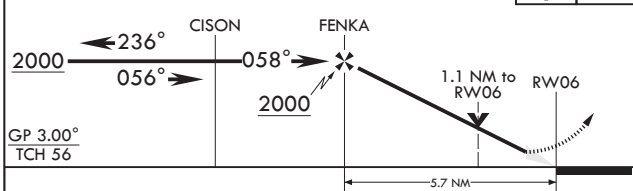
Missed approach holding at DAYYO NA when R-5001 is active with aerial gunnery.

EMERG SAFE ALT 100 NM 5100

NE-2, 08 AUG 2024 to 05 SEP 2024

NE-2, 08 AUG 2024 to 05 SEP 2024

VGSI and RNAV glidepath not coincident (VGSI angle 3.00/TCH 76).	2000 DAYYO	ELEV 141	TDZE 131
--	------------	----------	----------



CATEGORY	A	B	C	D	E
LPV DA*	331/18		200	(200-½)	
LNAV/VNAV DA**	560/40		429	(500-¾)	
LNAV MDA***	560/24	429 (500-½)	560/40	429 (500-¾)	
<b>C</b> CIRCLING****	680-1	539 (600-1)	700-1½ (600-1½)	700-2 (600-2)	1200-3 559 1059 (1100-3)

WRIGHTSTOWN, NEW JERSEY  
Amdt 7 18MAY23

MC GUIRE FIELD (JOINT BASE MC GUIRE DIX LAKEHURST) (KWRI)  
40°01'N - 74°36'W

# RNAV (GPS) RWY 6