

ILS RWY 6 (CAT II)

MC GUIRE FLD,

AL-150 [USAF]

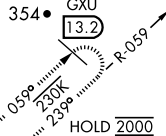
(JOINT BASE MC GUIRE DIX LAKEHURST) (KWRI)

LOC I-WRI 110.1	APCH CRS 058°	Rwy Ldg 10,014 TDZE 131 Arpt Elev 141
---------------------------	-------------------------	--

RADAR or DME required to identify the FAF.		ALSIF-2	MISSED APPROACH: Climb to 2000 via GXU R-059 to DAYYO and hold. Alternate Missed Approach instructions: Climb to 2000 via GXU R-059 to DAYYO, expect further clearance from ATC.	
--	--	---------	--	--

ATIS 110.6 270.1	MC GUIRE APP CON/DEP CON 126.475 363.8	MC GUIRE TOWER 118.65 255.6	GND CON 121.8 275.8	CLNC DEL 135.2 335.8	PAR
----------------------------	--	---------------------------------------	-------------------------------	--------------------------------	-----

CATEGORY II ILS - SPECIAL AIRCREW & AIRCRAFT CERTIFICATION REQUIRED



Missed Approach holding at DAYYO NA when R-5001 is active with aerial gunnery.

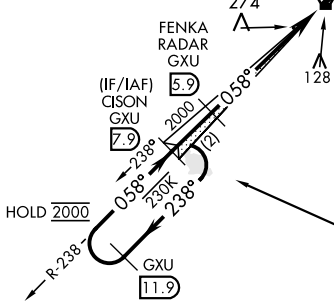
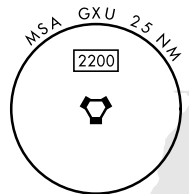
RADAR REQUIRED WHEN R-5001 IS ACTIVE

If RADAR inoperative, expect 15 min delay for deactivation of R-5001.

MC GUIRE
110.6 GXU
Chan 43

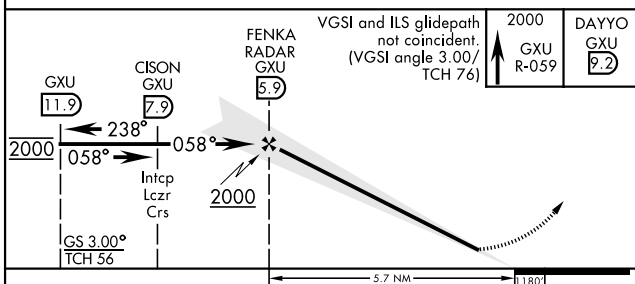
R-5001 A & B
R-5001 A
LOCALIZER 110.1
I-WRI

COYLE
113.4 CYN
Chan 81

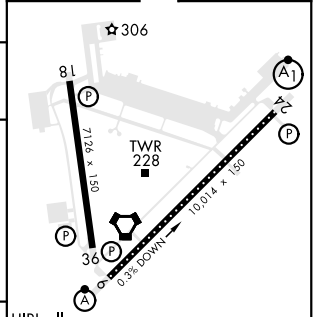


RADAR required for holding above 2000 and/or > than 230 KIAS.

EMERG SAFE ALT 100 NM 5100 FROM GXU VORTAC



ELEV 141	TDZE 131
----------	----------



CATEGORY	A	B	C	D	E
S-ILS 6		RA 91/12	100	DA 231	

HIRL all rwys
REIL Rwys 18, 36
TDZL/CL Rwy 6

ILS RWY 6 (CAT II)

NE-2, 08 AUG 2024 TO 05 SEP 2024

NE-2, 08 AUG 2024 TO 05 SEP 2024