

FORT MOORE, GEORGIA

# ILS or LOC RWY 33

LOC I-LSF <b>110.7</b>	APCH CRS <b>327°</b>	Rwy ldg TDZE Arpt Elev <b>9302</b> <b>226</b> <b>227</b>
---------------------------	-------------------------	-------------------------------------------------------------------------

[USA]

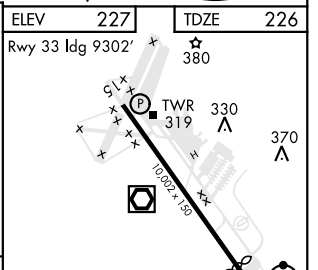
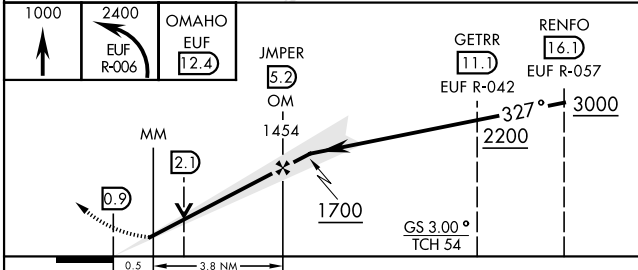
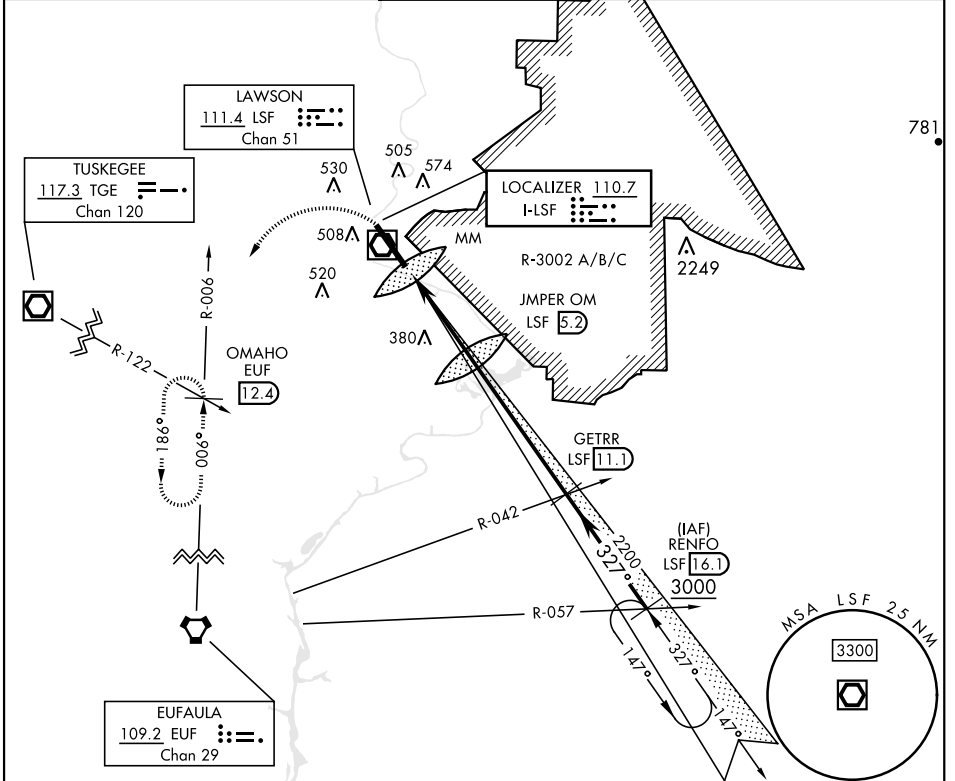
LAWSON AAF (KLSF)

▼ \* Circling not authorized E of Rwy 15-33.  
 NA when tower closed.



MISSED APPROACH: Climb to 1000 then climbing left turn to 2400 via EUF R-006 to OMAHO INT/EUF 12.4 DME and hold.

ATIS ★ <b>134.375</b>	ATLANTA APP CON <b>125.5 323.1</b>	TOWER <b>119.05</b> (CTAF) <b>269.525</b>	GND CON <b>121.7 254.25</b>	CLNC DEL <b>121.7 251.15</b>
--------------------------	---------------------------------------	----------------------------------------------	--------------------------------	---------------------------------



CATEGORY	A	B	C	D
S-ILS 33	426/24	200 (200-½)	426/40	200 (200-¾)
S-LOC 33	640/40	414 (500-¾)	640/50	414 (500-1)
CIRCLING*	820-1	593 (600-1)	840-1 ¾ 613 (700-1 ¾)	880-2 653 (700-2)

HIRL Rwy 15-33				
FAF to MAP 4.4 NM				
Knots	60	90	120	150 180
Min:Sec	4:24	2:56	2:12	1:46 1:28

FORT MOORE, GEORGIA

32° 20' N-85° 00' W

LAWSON AAF (KLSF)

Orig B 22FEB24

# ILS or LOC RWY 33

SE-4, 31 OCT 2024 to 28 NOV 2024

SE-4, 31 OCT 2024 to 28 NOV 2024