

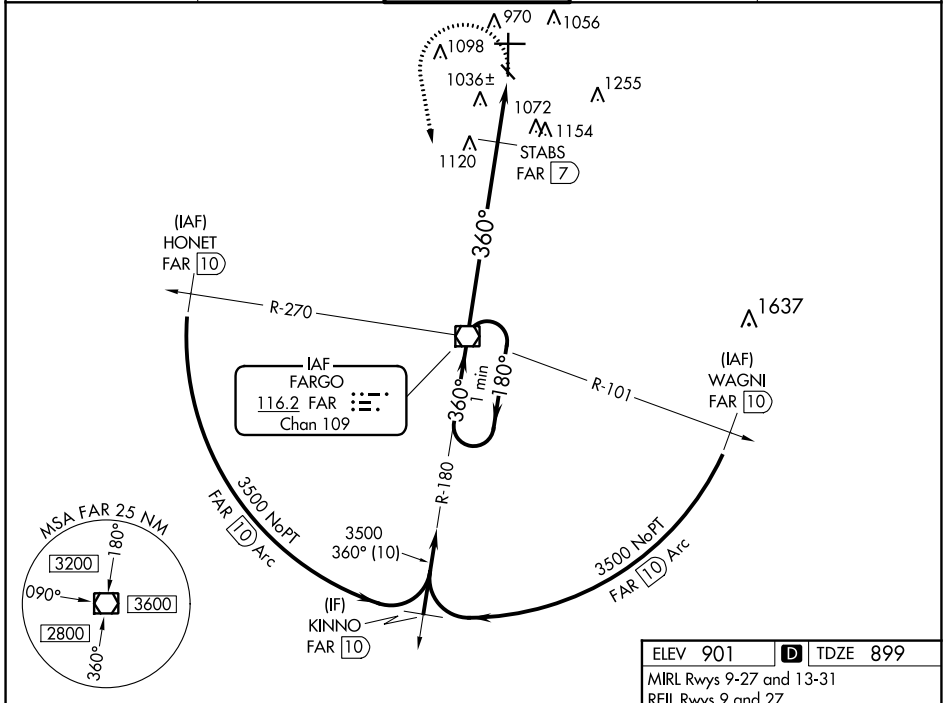
VOR/DME FAR <b>116.2</b> Chan <b>109</b>	APP CRS <b>360°</b>	Rwy Idg TDZE <b>899</b> Apt Elev <b>901</b>
--	------------------------	---

# VOR RWY 36

HECTOR INTL (FAR)

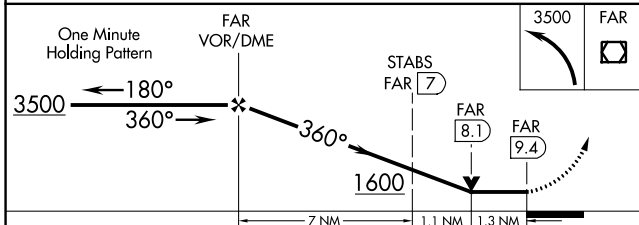
For inop MALSRS, increase S-36 Cat E visibility to 2½ miles. STABS Fix Minimums: For inop MALSRS, increase S-36 Cat E visibility to 1¾ mile.	MALSRS	MISSED APPROACH: Climbing left turn to 3500 direct FAR VOR/DME and hold.

ATIS <b>124.5 379.2</b>	FARGO APP CON <b>120.4 377.15</b>	FARGO TOWER <b>133.8 290.4</b>	GND CON <b>121.9 348.6</b>	CINC DEL <b>121.9 348.6</b>
----------------------------	--------------------------------------	-----------------------------------	-------------------------------	--------------------------------



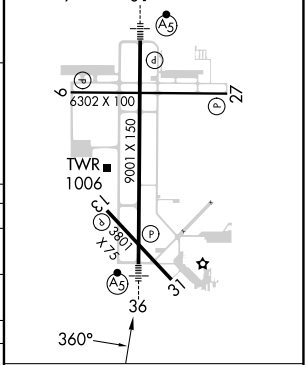
NC-1, 11 JUL 2024 to 08 AUG 2024

NC-1, 11 JUL 2024 to 08 AUG 2024



ELEV 901 TDZE 899

MRL Rwy 9-27 and 13-31  
REIL Rwy 9 and 27  
HIRL Rwy 18-36 81



CATEGORY	A	B	C	D	E
S-36	1600/24	701 (700-½)	1600-1½ 701 (700-1½)	1600-1¾ 701 (700-1¾)	1600-2 701 (700-2)
CIRCLING	1600-1	699 (700-1)	1600-2 699 (700-2)	1620-2¼ 719 (700-2¼)	1620-2½ 719 (700-2½)
STABS FIX MINIMUMS					
S-36	1380/24	481 (500-½)	1380/40 481 (500-¾)	1380/50 481 (500-1)	1380/60 481 (500-1½)
CIRCLING	1380-1	479 (500-1)	1520-1¾ 619 (700-1¾)	1620-2¼ 719 (800-2¼)	1620-2½ 719 (800-2½)

FAR to MAP 9.4 NM					
Knots	60	90	120	150	180
Min:Sec	9:24	6:16	4:42	3:46	3:08