

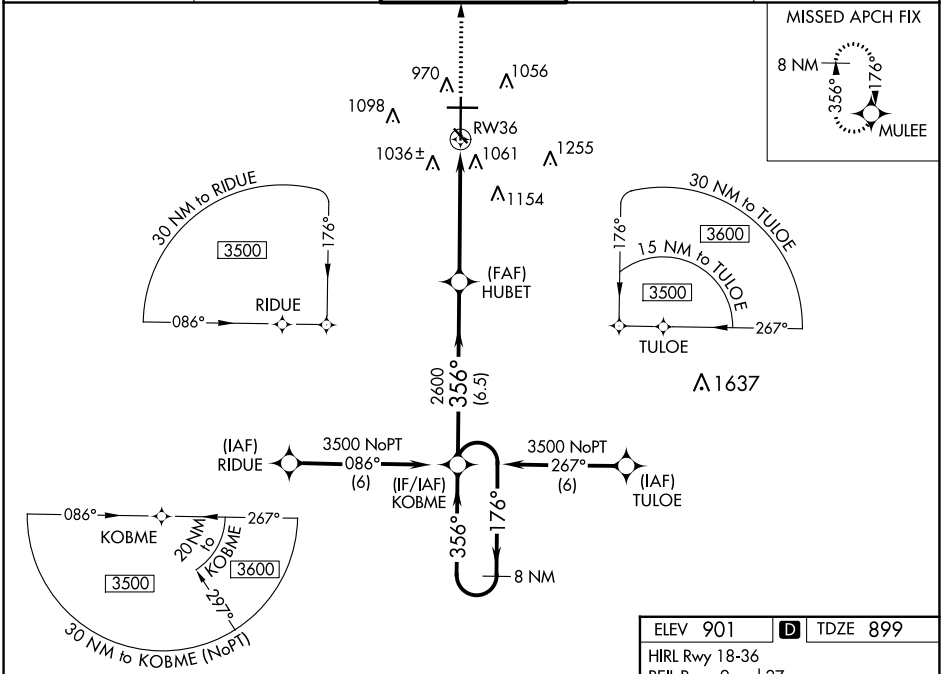
WAAS CH <b>50106</b> <b>W36A</b>	APP CRS <b>356°</b>	Rwy Idg TDZE Apt Elev	<b>9001</b> <b>899</b> <b>901</b>
--	------------------------	-----------------------------	---

# RNAV (GPS) RWY 36

HECTOR INTL (F.A.R.)

RNP APCH.	MALSR	MISSED APPROACH: Climb to 3500 direct MULEE and hold.
<p>Baro-VNAV NA below -16°C (4°F). For inop MALSR, increase LPV Cat E visibility to RVR 4000, and increase LNAV/VNAV and LNAV Cat E visibility to 1½ mile.</p>		

ATIS <b>124.5 379.2</b>	FARGO APP CON <b>120.4 377.15</b>	FARGO TOWER <b>133.8 290.4</b>	GND CON <b>121.9 348.6</b>	CLNC DEL <b>121.9 348.6</b>
----------------------------	--------------------------------------	-----------------------------------	-------------------------------	--------------------------------



NC-1, 05 SEP 2024 to 03 OCT 2024

NC-1, 05 SEP 2024 to 03 OCT 2024

<p>VGSI and RNAV glidepath not coincident (VGSI Angle 3.00/TCH 71).</p>		3500	MULEE
<p>8 NM Holding Pattern</p>			
<p>GP 3.00° TCH 55</p>		<p>*1.4 NM to RW36 *LNAV only.</p>	
<p>6.5 NM</p>		<p>3.7 NM</p>	
<p>1.4 NM</p>		<p>81</p>	
<p>81</p>		<p>36</p>	
<p>356°</p>			
<p>ELEV 901</p>		<p>TDZE 899</p>	
<p>HIRL Rwy 18-36</p>		<p>REIL Rwys 9 and 27</p>	
<p>MIRL Rwys 9-27 and 13-31</p>		<p>3301</p>	
<p>3301</p>		<p>36</p>	
<p>36</p>		<p>36</p>	