

LOC/DME I-FAR <b>110.3</b> Chan <b>40</b>	APP CRS <b>356°</b>	Rwy Idg TDZE Apt Elev	<b>9001</b> <b>899</b> <b>901</b>
---	------------------------	-----------------------------	---

# ILS or LOC RWY 36

HECTOR INTL (F.A.R.)

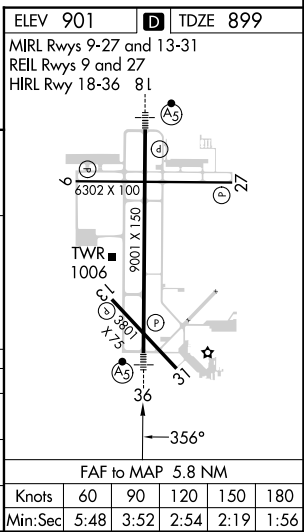
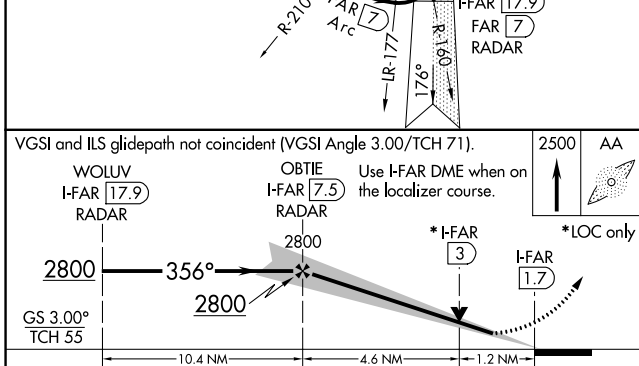
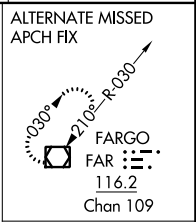
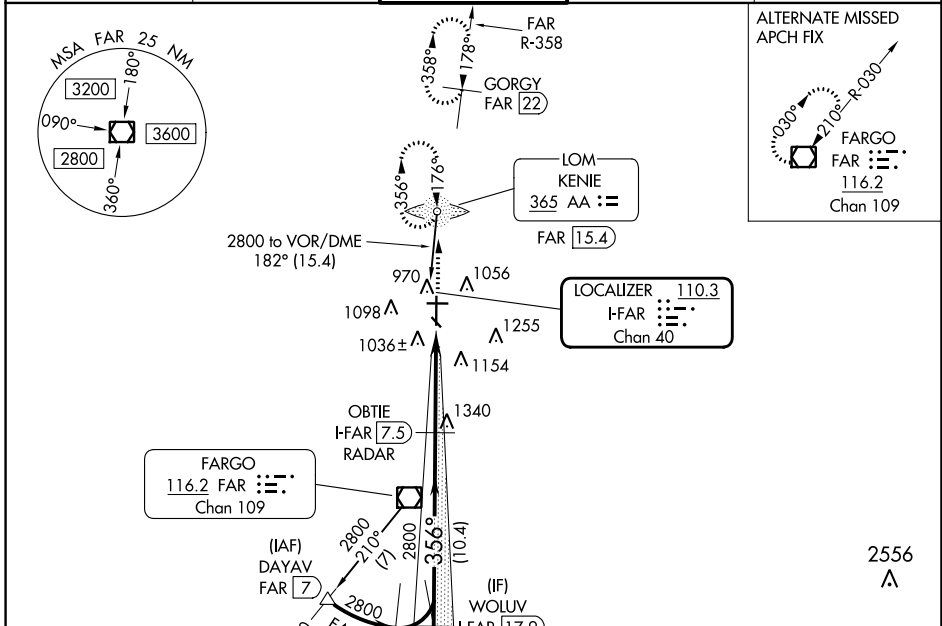
ADF or DME required for procedure entry. ADF or DME required.

**▼** For inop ALS increase S-ILS 36 Cat E visibility to RVR 4000 and S-LOC 36 Cat C/D/E visibility to 1 3/8 SM.  
**▲** #RVR 1800 authorized with use of FD or AP or HUD to DA.



MISSED APPROACH: Climb to 2500 direct KENIE LOM and hold (DME aircraft climb to 4000 on FAR VOR/DME R-358 to GORGY/22 DME and hold N, RT, 178° inbound, continue climb-in-hold to 4000).

ATIS <b>124.5 379.2</b>	FARGO APP CON <b>120.4 377.15</b>	FARGO TOWER <b>133.8 290.4</b>	GND CON <b>121.9 348.6</b>	CINC DEL <b>121.9 348.6</b>
----------------------------	--------------------------------------	-----------------------------------	-------------------------------	--------------------------------



CATEGORY	A	B	C	D	E
S-ILS 36#	1099/24 200 (200-1/2)				
S-LOC 36	1360/24 461 (500-1/2)	1360/50 461 (500-1)			
CIRCLING	1380-1 479 (500-1)	1520-1 3/4 619 (700-1 3/4)	1620-2 1/4 719 (800-2 1/4)	1620-2 1/2 719 (800-2 1/2)	

NC-1, 05 SEP 2024 to 03 OCT 2024

NC-1, 05 SEP 2024 to 03 OCT 2024