

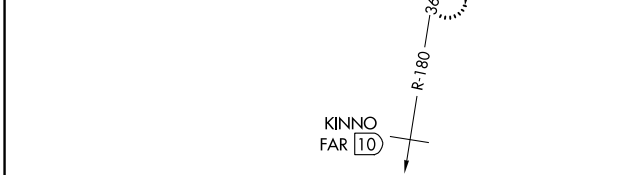
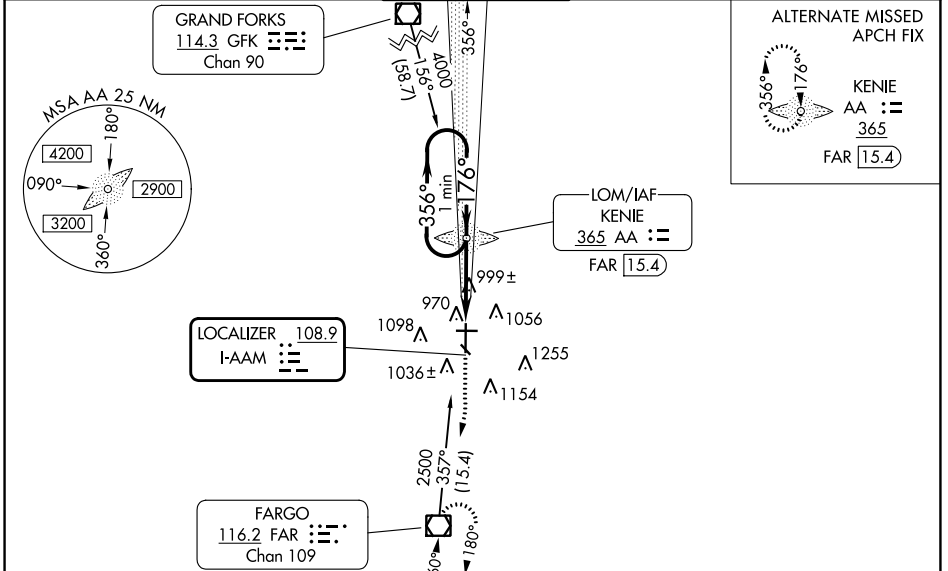
LOC I-AAM 108.9	APP CRS 176°	Rwy Idg 9001	TDZE 900	Apt Elev 901
---------------------------	------------------------	-----------------	-------------	-----------------

ILS or LOC RWY 18

HECTOR INTL (FAR)

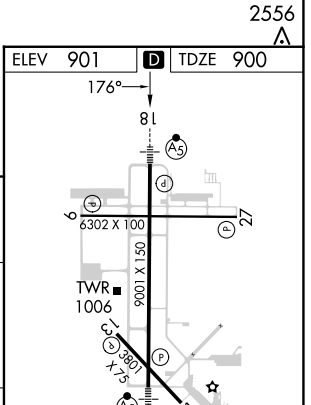
ADF or DME required for procedure entry.		MALSR 	MISSED APPROACH: Climb to 2500 direct FAR VOR/DME and hold.
⚠ For inop MALSR, increase S-ILS 18 Cat E visibility to RVR 4000, and S-LOC 18 Cat E visibility to RVR 5000. * Visibility Cat A/B/C/D RVR 1800 authorized with the use of FD or AP or HUD to DA.			

ATIS 124.5 379.2	FARGO APP CON 120.4 377.15	FARGO TOWER 133.8 290.4	GND CON 121.9 348.6	CLNC DEL 121.9 348.6
----------------------------	--------------------------------------	-----------------------------------	-------------------------------	--------------------------------



VGSI and ILS glidepath not coincident (VGSI Angle 3.00/TCH 68).

AA KENIE LOM FAR 15.4	2500 FAR
One Minute Holding Pattern	
GS 3.00° TCH 51	
2500 ← 356°	→ 176° 2500
4.6 NM	



CATEGORY	A	B	C	D	E	HIRL Rwy 18-36 REIL Rws 9 and 27 MRL Rws 9-27 and 13-31 FAF to MAP 4.6 NM
S-ILS 18*	1100/24 200 (200-½)					
S-LOC 18	1260/24	360 (400-½)	1260/40	360 (400-¾)		
Ⓢ CIRCLING	1380-1	479 (500-1)	1520-1¾ 619 (700-1¾)	1620-2¼ 719 (800-2¼)	1620-2½ 719 (800-2½)	
	Knots	60	90	120	150	180
	Min:Sec	4:36	3:04	2:18	1:50	1:32

NC-1, 05 SEP 2024 to 03 OCT 2024

NC-1, 05 SEP 2024 to 03 OCT 2024