

# YERIN-EIGHT DEPARTURE (YERIN8 • YERIN)

FALLON NAS (VAN VOORHIS FLD) (KNFL)  
FALLON, NEVADA

ATIS 370.925 ★  
CLNC DEL  
353.55  
GND CON  
251.15  
NAVY FALLON TOWER ★  
119.25 340.2  
NAVY FALLON APP/DEP CON  
120.85 360.2

**TOP ALTITUDE**  
**15,000**

AL-143 [USN]

FALLON MUNI

CAUTION: Fallon Muni Airport (uncontrolled)  
5 NM NW Pattern alt 800 AGL.

Acft unable to make  
ATC climb gradient  
advise ATC prior to  
departure.

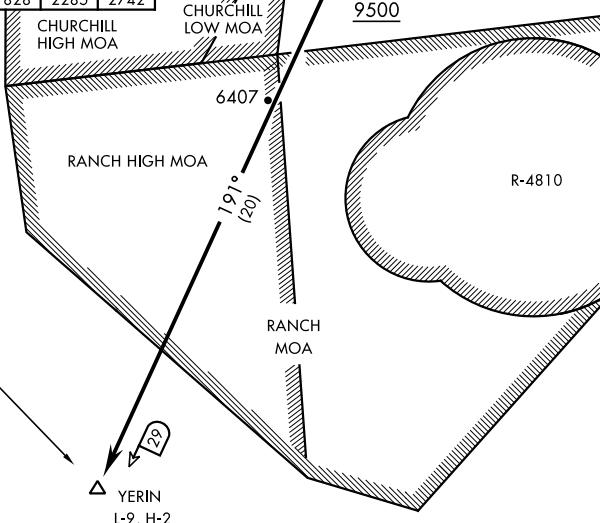
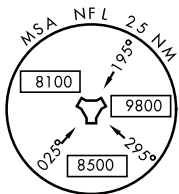
FALLON  
Chan 82 NFL

Rwy	Knots	60	120	180	240	300	360
* 7	ⓐ V/V(fpm)	215	430	645	860	1075	1290
† 7	ⓑ V/V(fpm)	527	1054	1581	2108	2635	3162
* 13L	ⓐ V/V(fpm)	232	464	696	928	1160	1392
† 13L	ⓑ V/V(fpm)	582	1164	1746	2328	2910	3492
* 13R	ⓐ V/V(fpm)	235	470	705	940	1175	1410
† 13R	ⓑ V/V(fpm)	593	1186	1779	2372	2965	3558
* 25	ⓐ V/V(fpm)	238	476	714	952	1190	1428
† 25	ⓑ V/V(fpm)	606	1212	1818	2424	3030	3636
† 31L	ⓑ V/V(fpm)	461	922	1383	1844	2305	2766
† 31R	ⓑ V/V(fpm)	457	914	1371	1828	2285	2742

\* Minimum Military and Civil † ATC Climb Rate

- ⓐ to 7200
- ⓑ to 9500

MUSTANG  
117.9 FMG  
Chan 126



EMERG SAFE ALT 100NM 15,600

YERIN  
L-9, H-2

## DEPARTURE ROUTE DESCRIPTION

**TAKE-OFF RWY 7:** Turn right hdg 236° to intercept NFL TACAN R-191 to YERIN. Cross FITNU at or above 9500. Do not exceed 250 KIAS until intercepting NFL R-191.

**TAKE-OFF RWY 13L/R:** Climbing right turn hdg 236° to intercept NFL R-191 to YERIN. Cross FITNU at or above 9500. Do not exceed 250 KIAS until intercepting NFL R-191.

**TAKE-OFF RWY 25:** Climbing left turn hdg 146° to intercept NFL R-191 to YERIN. Cross FITNU at or above 9500. Do not exceed 250 KIAS until intercepting NFL R-191.

**TAKE-OFF RWY 31L/R:** Climb to 4500 via heading 311°, then climbing right turn to NFL TACAN, intercept NFL R-191 to YERIN. Do not exceed 250 KIAS until NFL TACAN. Cross FITNU at or above 9500.

# YERIN-EIGHT DEPARTURE (YERIN8 • YERIN)

Orig 24MAR22

FALLON, NEVADA  
FALLON NAS (VAN VOORHIS FLD) (KNFL)

SW-4, 03 OCT 2024 to 31 OCT 2024

SW-4, 03 OCT 2024 to 31 OCT 2024