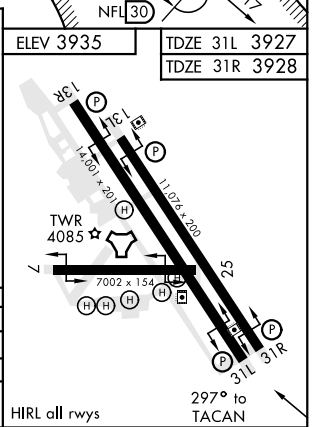
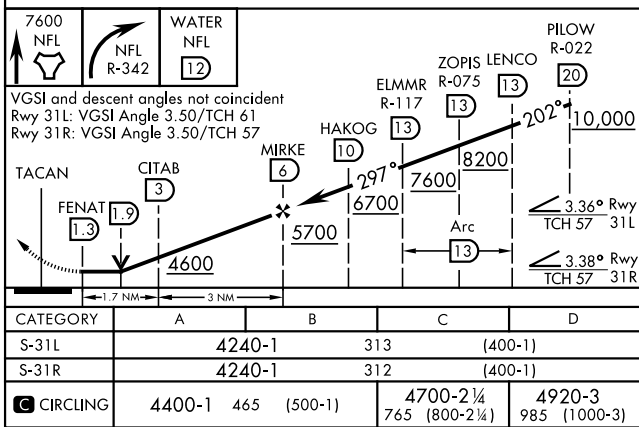
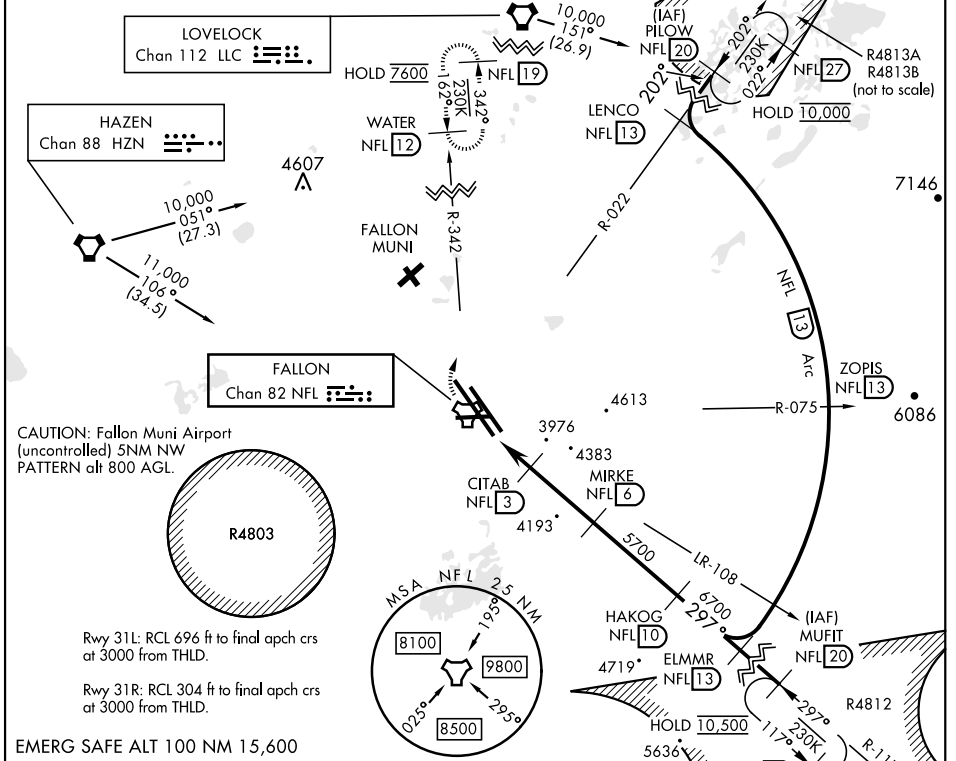


# TACAN Y RWY 31L/R

TACAN NFL Chan <b>82</b>	APCH CRS <b>297°</b>	Rwy Idg 31L <b>14,001</b> TDZE 31L <b>3927</b> Arpt Elev <b>3935</b>	31R <b>11,076</b> 31R <b>3928</b>
-----------------------------	-------------------------	--	--------------------------------------

AL-143 [USN] FALLON NAS (VAN VOORHIS FLD) (KNFL)

MISSED APPROACH: Climb direct NFL TACAN, then climbing right turn to 7600. Intercept NFL R-342 outbound to WATER and hold. Continue climb-in-hold to 7600.					
ATIS ★ <b>370.925</b>	NAVY FALLON APP CON <b>120.85 360.2</b>	NAVY FALLON TOWER ★ <b>119.25 340.2</b>	GND CON <b>251.15</b>	CLNC DEL <b>353.55</b>	ASR/PAR



FALLON, NEVADA 39° 25'N-118° 42'W FALLON NAS (VAN VOORHIS FLD) (KNFL)

# TACAN Y RWY 31L/R

SW-4, 03 OCT 2024 to 31 OCT 2024

SW-4, 03 OCT 2024 to 31 OCT 2024