

FALLON, NEVADA

# TACAN Y RWY 13R

TACAN NFL Chan <b>82</b>	APCH CRS <b>141°</b>	Rwy ldg TDZE Arprt Elev <b>14,001</b> <b>3935</b> <b>3935</b>
-----------------------------	-------------------------	------------------------------------------------------------------------------

AL-143 [USN] FALLON NAS (VAN VOORHIS FLD) (KNFL)

MISSED APPROACH: Climb direct NFL TACAN, then climbing left turn to 10,500. Intercept NFL R-117 outbound to MUFIT and hold. Continue climb-in-hold to 10,500.

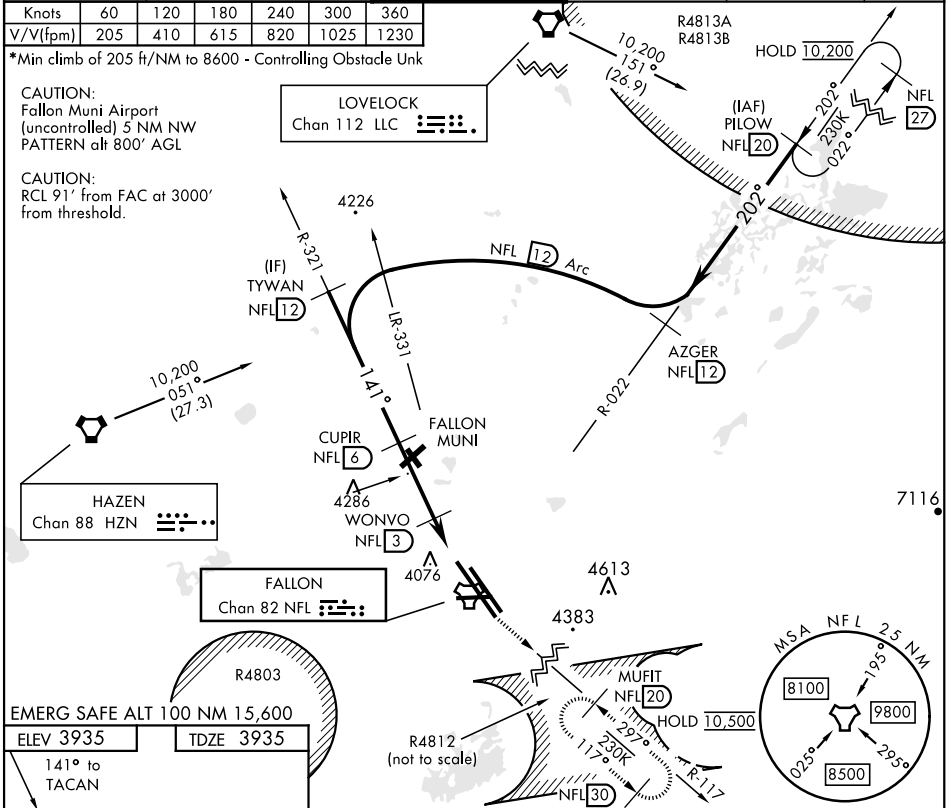
ATIS ★ <b>370.925</b>	NAVY FALLON APP CON <b>120.85 360.2</b>	NAVY FALLON TOWER★ <b>119.25 340.2</b>	GND CON <b>251.15</b>	CLNC DEL <b>353.55</b>	ASR/PAR
--------------------------	--------------------------------------------	-------------------------------------------	--------------------------	---------------------------	---------

Knots	60	120	180	240	300	360
V/V(fpm)	205	410	615	820	1025	1230

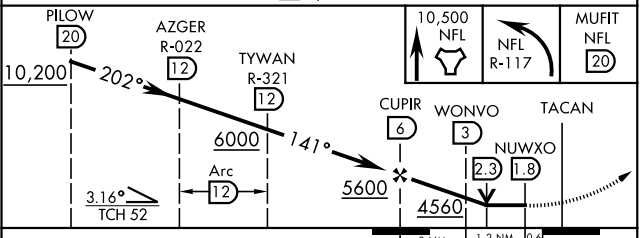
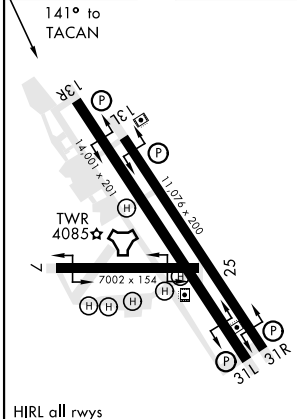
\*Min climb of 205 ft/NM to 8600 - Controlling Obstacle Unk

CAUTION:  
Fallon Muni Airport  
(uncontrolled) 5 NM NW  
PATTERN alt 800' AGL

CAUTION:  
RCL 91' from FAC at 3000'  
from threshold.



EMERG SAFE ALT 100 NM 15,600  
ELEV 3935 TDZE 3935



CATEGORY	A	B	C	D
S-13R *	4340-1	405 (500-1)	4340-1 1/8	405 (500-1 1/8)
S-13R	4440-1	505 (600-1)	4440-1 3/8	505 (600-1 3/8)
☐ CIRCLING	4400-1	465 (500-1)	4700-2 1/4 765 (800-2 1/4)	4920-3 985 (1000-3)

FALLON, NEVADA  
Amdt 3 19MAY22

39°25'N-118°42'W FALLON NAS (VAN VOORHIS FLD) (KNFL)

# TACAN Y RWY 13R

SW-4, 08 AUG 2024 TO 05 SEP 2024

SW-4, 08 AUG 2024 TO 05 SEP 2024