

# HI-TACAN Z RWY 13R

TACAN NFL Chan <b>82</b>	APCH CRS <b>141°</b>	Rwy Idg <b>14,001</b> TDZE <b>3935</b> Arpt Elev <b>3935</b>	AL-143 [USX]	FALLON NAS (VAN VOORHIS FLD) (KNFL)
-----------------------------	-------------------------	--	--------------	-------------------------------------

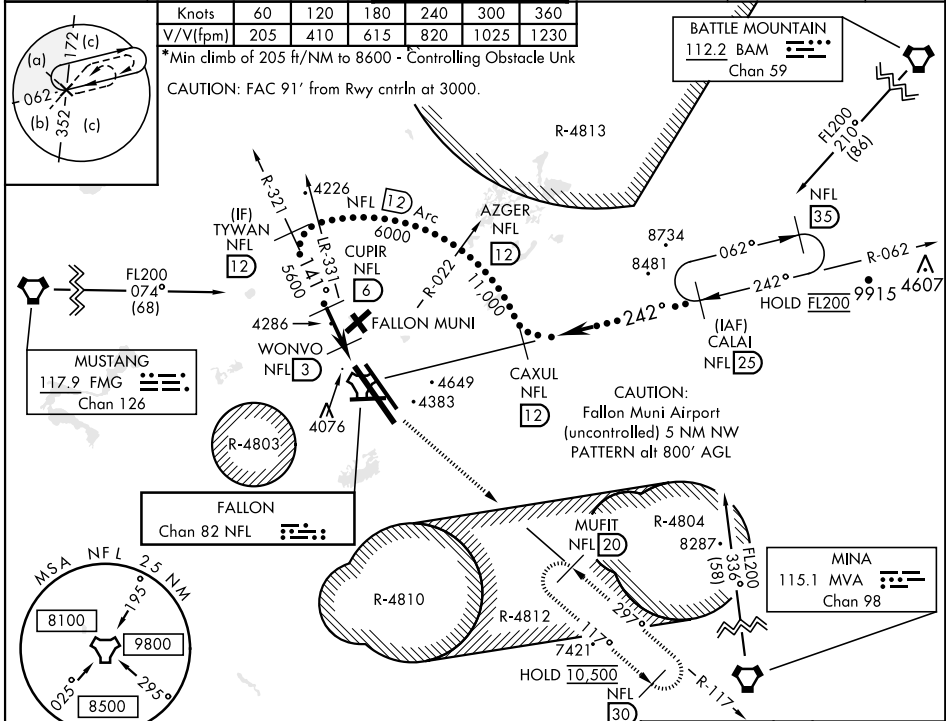
**MISSED APPROACH:** Climb direct NFL TACAN, then climbing left turn to 10,500. Intercept NFL R-117 to MUFIT and hold. Continue climb-in-hold to 10,500.

ATIS ★ <b>370.925</b>	NAVY FALLON APP CON <b>120.85 360.2</b>	NAVY FALLON TOWER ★ <b>119.25 340.2</b>	GND CON <b>251.15</b>	CLNC DEL <b>353.55</b>	ASR/PAR
--------------------------	--	--	--------------------------	---------------------------	---------

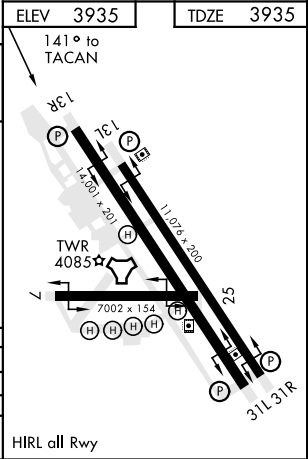
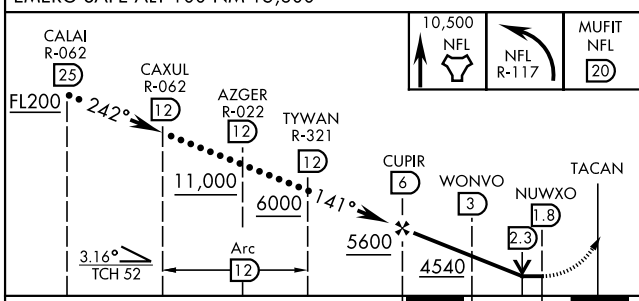
Knots	60	120	180	240	300	360
V/V(fpm)	205	410	615	820	1025	1230

\*Min climb of 205 ft/NM to 8600 - Controlling Obstacle Unk

CAUTION: FAC 91' from Rwy cntrlh at 3000.



EMERG SAFE ALT 100 NM 15,600	ELEV <b>3935</b>	TDZE <b>3935</b>
------------------------------	------------------	------------------



CATEGORY	C	D	E
S-13R*	4340-1 1/8	405 (500-1 1/8)	
S-13R	4440-1 3/8	505 (600-1 3/8)	
CIRCLING	4700-2 1/4 765 (800-2 1/4)	4920-3 985 (1000-3)	4960-3 1025 (1100-3)

FALLON, NEVADA 39°25'N-118°42'W FALLON NAS (VAN VOORHIS FLD) (KNFL)

Amdt 4 19MAY22

# HI-TACAN Z RWY 13R

SW-4, 03 OCT 2024 to 31 OCT 2024

SW-4, 03 OCT 2024 to 31 OCT 2024