


WAAS CH <b>61129</b> <b>W16A</b>	APP CRS <b>163°</b>	Rwy Idg TDZE Apt Elev	<b>9010</b> <b>570</b> <b>608</b>
--	------------------------	-----------------------------	---

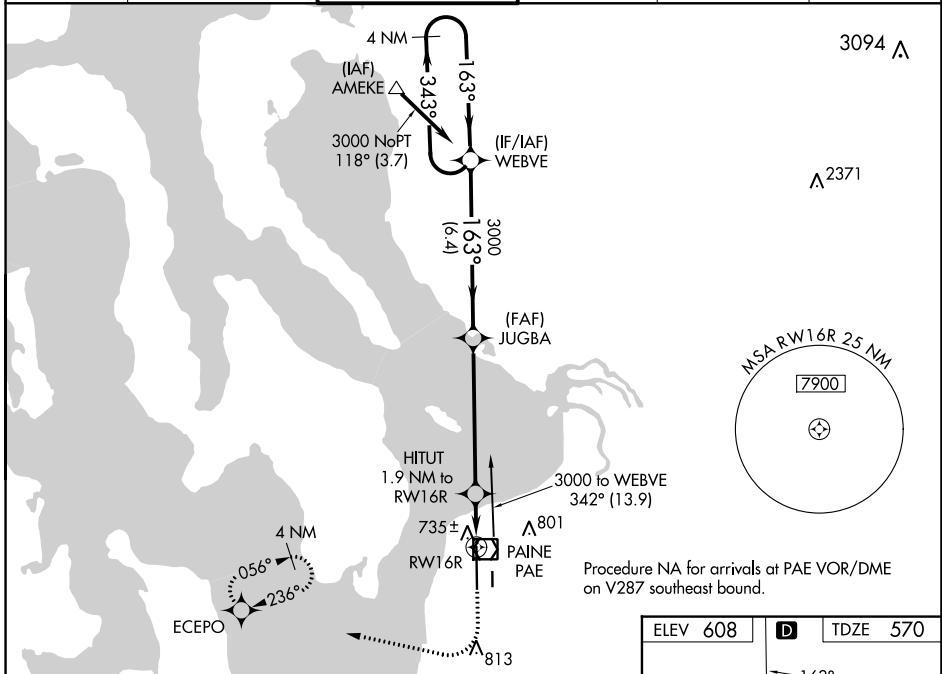
# RNAV (GPS) Z RWY 16R

SEATTLE PAINE FLD INTL (P.A.E.)

**▽** For uncompensated Baro-VNAV systems, LNAV/VNAV NA below -5°C (23°F) or above 54°C (130°F). Circling Rwy 34R NA at night. DME/DME RNP-0.3 NA.

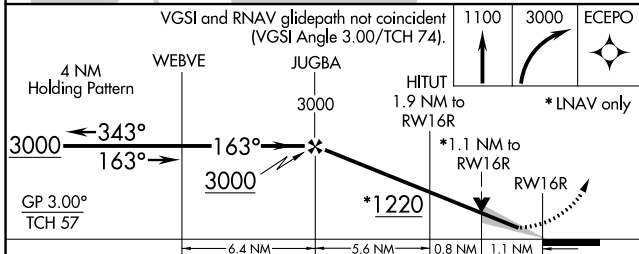
**MALSR**  
 MISSED APPROACH: (Do not exceed 240K until ECEPO) Climb to 1100 then climbing right turn to 3000 direct ECEPO and hold, continue climb-in-hold to 3000.

ATIS <b>128.65</b>	SEATTLE APP CON <b>128.5 306.9</b>	PAINE TOWER * <b>132.95 (CTAF) 0 256.7</b>	GND CON <b>121.8 339.8</b>	CLNC DEL <b>127.175</b>	UNICOM <b>122.95</b>
-----------------------	---------------------------------------	---	-------------------------------	----------------------------	-------------------------



NW-1, 18 APR 2024 to 16 MAY 2024

NW-1, 18 APR 2024 to 16 MAY 2024



ELEV 608	<b>D</b>	TDZE 570
----------	----------	----------

LPV DA	770/18		200 (200-½)	
LNAV/VNAV DA	913/30		343 (400-⅝)	
LNAV MDA	1000/24		430 (400-½)	
			1000/40	
			430 (400-¾)	
<b>C</b> CIRCLING	1100-1		492 (500-1)	
			1120-1½	
			512 (600-1½)	
			1160-2	
			552 (600-2)	

TDZ/CL Rwy 16R  
HIRL Rwy 16R-34L  
REIL Rwys 16L and 34R  
MIRL Rws 11-29 and 16L-34R