


WAAS CH <b>60911</b> <b>W16B</b>	APP CRS <b>163°</b>	Rwy Idg TDZE Apt Elev	<b>9010</b> <b>570</b> <b>608</b>
--	------------------------	-----------------------------	---

# RNAV (GPS) Y RWY 16R

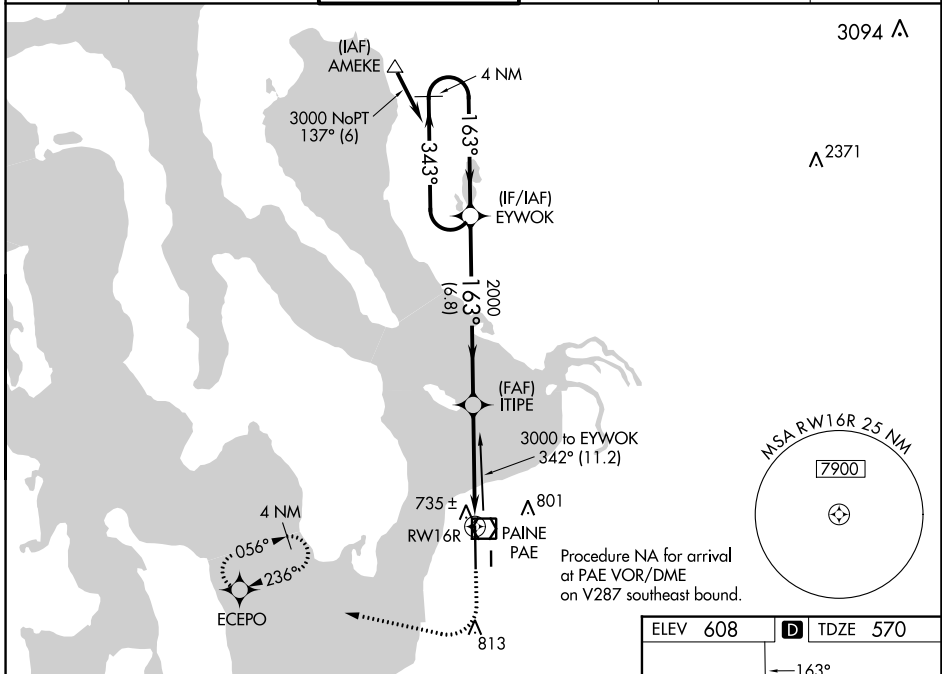
SEATTLE PAINE FLD INTL (P.A.E.)

**▽** For uncompensated Baro-VNAV systems, LNAV/VNAV NA below -5°C (23°F) or above 54°C (130°F). Circling Rwy 34R NA at night. DME/DME RNP-0.3 NA. For inop ALS, increase LNAV/VNAV Cats A/B visibility to RVR 5000.

MALSR 

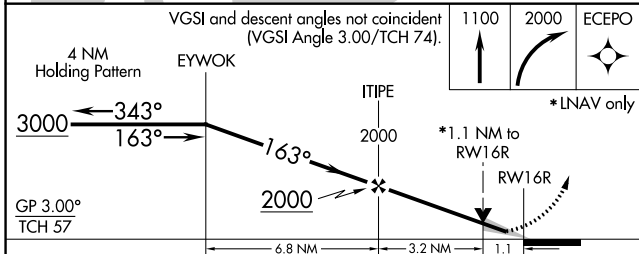
MISSED APPROACH: Climb to 1100 then climbing right turn to 2000 direct ECEPO and hold.

ATIS <b>128.65</b>	SEATTLE APP CON <b>128.5 306.9</b>	PAINE TOWER * <b>132.95 (CTAF) 0 256.7</b>	GND CON <b>121.8 339.8</b>	CLNC DEL <b>127.175</b>	UNICOM <b>122.95</b>
-----------------------	---------------------------------------	---	-------------------------------	----------------------------	-------------------------



NW-1, 18 APR 2024 to 16 MAY 2024

NW-1, 18 APR 2024 to 16 MAY 2024



CATEGORY	A	B	C	D
LPV DA	770/18	200 (200-1/2)		NA
LNAV/VNAV DA	894/30	324 (300-5/8)		NA
LNAV MDA	1000/24	430 (400-1/2)		NA
<b>C</b> CIRCLING	1100-1	492 (500-1)		NA

ELEV 608 **D** TDZE 570

TDZ/CL Rwy 16R  
HIRL Rwy 16R-34L  
REIL Rwys 16L and 34R  
MIRL Rwys 11-29 and 16L-34R