

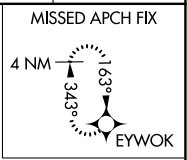
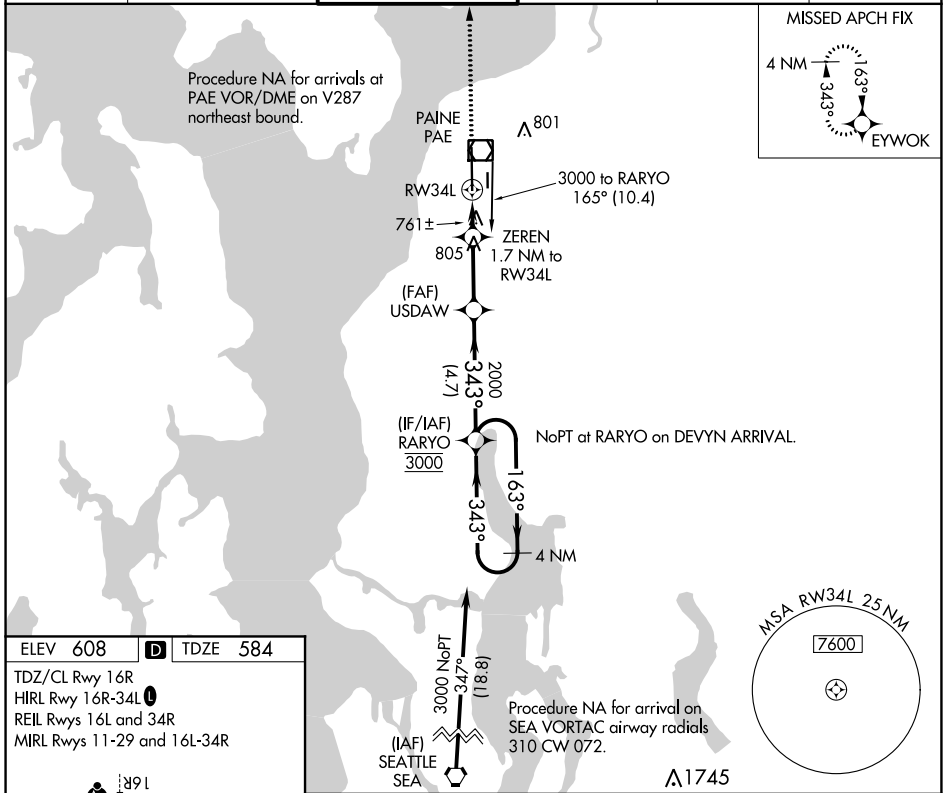
APP CRS	Rwy Idg	9010
343°	TDZE	584
	Apt Elev	608

RNAV (GPS) RWY 34L

SNOHOMISH COUNTY (PAINE FLD) (P.A.E.)

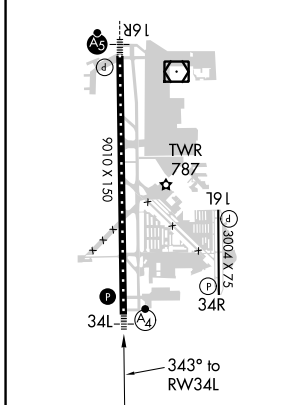
Circling Rwy 34R NA at night. Rwy 34L helicopter visibility reduction below 3/4 SM NA. DME/DME RNP-0.3 NA.	MALS F	MISSED APPROACH: Climb to 3000 direct EYWOK and hold.

ATIS 128.65	SEATTLE APP CON 128.5 306.9	PAINE TOWER ★ 132.95 (CTAF) 0 256.7	GND CON 121.8 339.8	CLNC DEL 127.175	UNICOM 122.95
-----------------------	---------------------------------------	---	-------------------------------	----------------------------	-------------------------

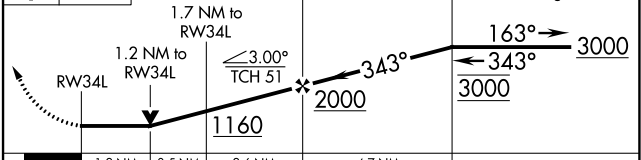


ELEV 608	D	TDZE 584
----------	----------	----------

TDZ/CL Rwy 16R
HIRL Rwy 16R-34L
REIL Rws 16L and 34R
MIRL Rws 11-29 and 16L-34R



3000	EYWOK	VGSI and descent angles not coincident (VGSI Angle 3.00/TCH 75).
------	-------	--



CATEGORY	A	B	C	D
LNAV MDA	1020-3/4 436 (500-3/4)		1020-1 436 (500-1)	
C CIRCLING	1100-1 492 (500-1)		1120-1 1/2 512 (600-1 1/2)	1160-2 552 (600-2)