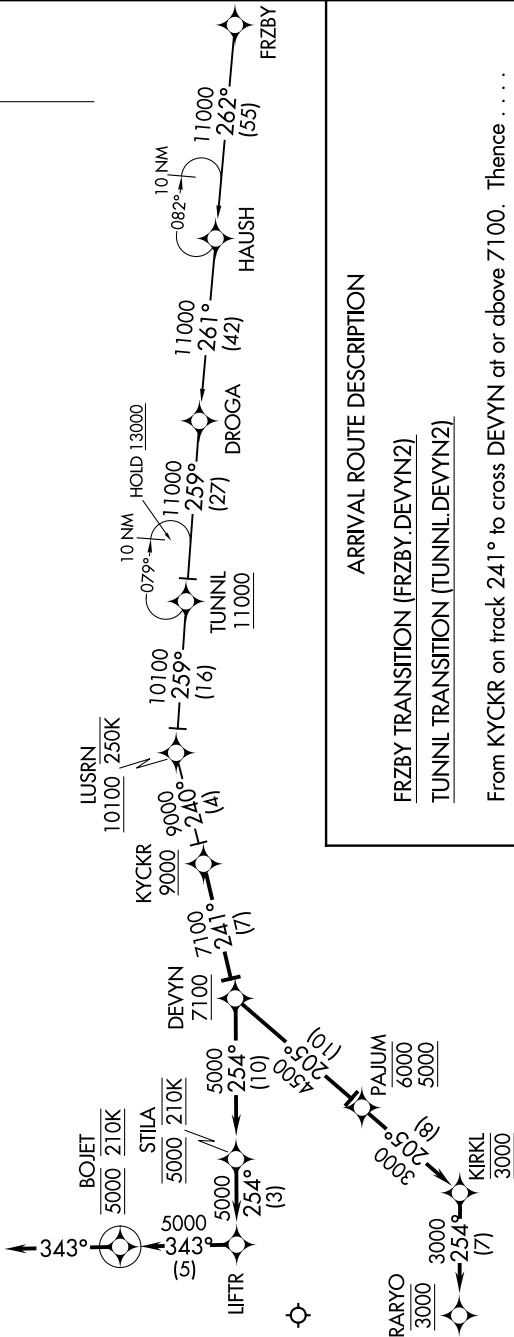


NW-1, 30 DEC 2021 to 27 JAN 2022

SEATTLE APP CON  
128.5 306.9  
ATIS  
128.65

- NOTE: RADAR required.
- NOTE: RNAV 1.
- NOTE: DME/DME/IRU or GPS required.
- NOTE: FRZBY TRANSITION: For non-GPS equipped aircraft, MWH, GEG and OLM DMEs must be operational.
- NOTE: TUNNL TRANSITION ATC assigned only.



ARRIVAL ROUTE DESCRIPTION

- FRZBY TRANSITION (FRZBY.DEVYN2)
- TUNNL TRANSITION (TUNNL.DEVYN2)

From KYCKR on track 241° to cross DEVYN at or above 7100. Thence . . . .

LANDING RUNWAY 16R: From DEVYN on track 254° to cross STILA at 5000 and at 210K, then on track 254° to LIFTR, then on track 343° to cross BOJET at 5000 and at 210K, then on heading 343° or as assigned by ATC. Expect RADAR vectors to final approach course.

LANDING RUNWAY 34L: From DEVYN on track 205° to cross PAJUM between 5000 and 6000, then on track 205° to cross KIRKL at 3000, then on track 254° to cross RARYO at 3000. Expect RNAV (GPS) RWY 34L approach.

NOTE: Chart not to scale.

NW-1, 30 DEC 2021 to 27 JAN 2022