

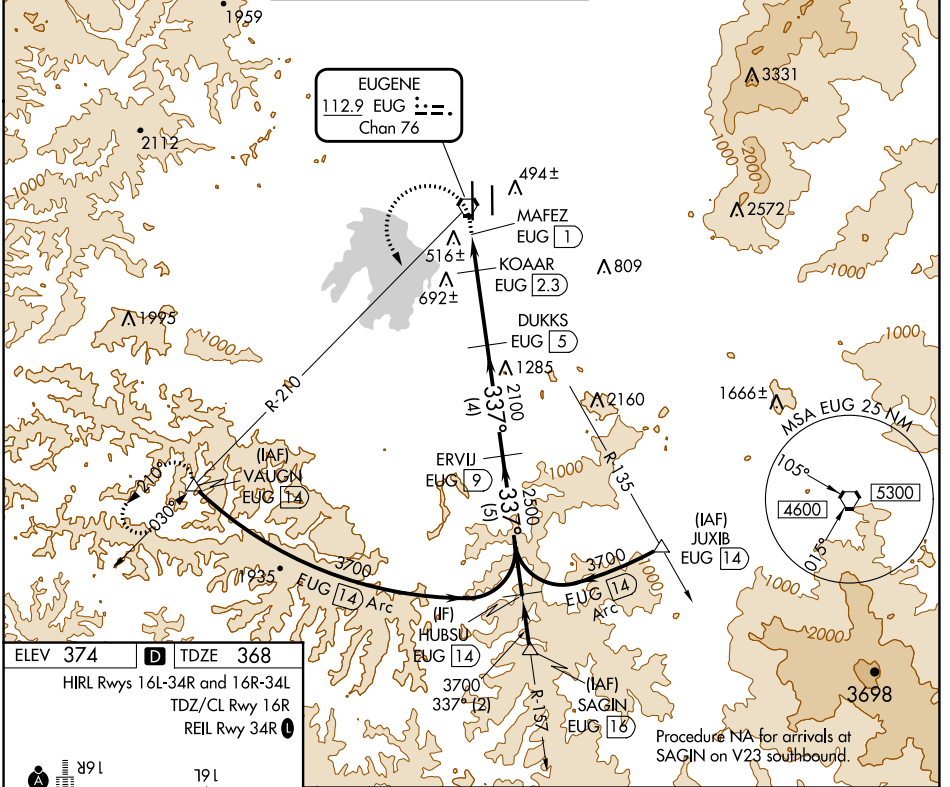
VORTAC EUG <b>112.9</b> Chan 76	APP CRS <b>337°</b>	Rwy Idg TDZE Apt Elev	<b>8009</b> <b>368</b> <b>374</b>
---------------------------------------	------------------------	-----------------------------	---

# VOR or TACAN RWY 34L

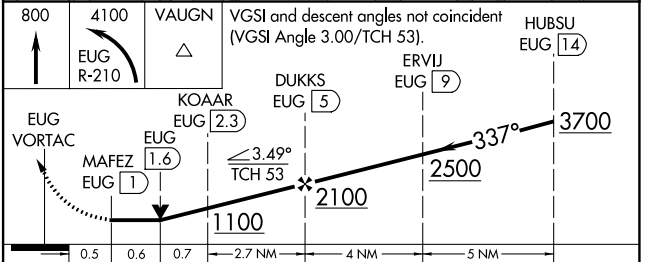
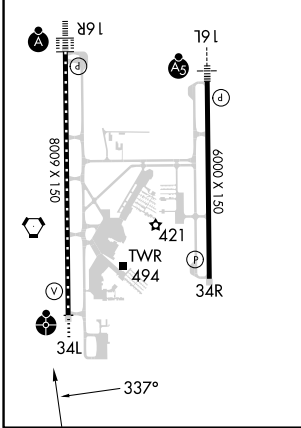
MAHLON SWEET FLD (EUG)

DME required for procedure entry. DME required.		ODALS	MISSED APPROACH: Climb to 800 then climbing left turn to 4100 on EUG VORTAC R-210 to VAUGN/EUG 1.4 DME and hold, continue climb-in-hold to 4100.		
---	--	-------	--	--	--

ATIS <b>125.225</b>	CASCADE APP CON* <b>119.6 348.7</b>	EUGENE TOWER* <b>118.9</b> (CTAF) <b>371.9</b> (Rwy 16R/34L) <b>124.15 371.9</b> (Rwy 16L/34R)	GND CON <b>121.7 269.5</b>	CLNC DEL <b>121.7 269.5</b>	UNICOM <b>122.95</b>
------------------------	--	--	-------------------------------	--------------------------------	-------------------------



ELEV 374	D	TDZE 368
HIRL Rws 16L-34R and 16R-34L		
TDZ/CL Rwy 16R		
REIL Rwy 34R		



CATEGORY	A	B	C	D
S-34L	780/40	412 (500-¾)	780/55	412 (500-1)
CIRCLING	820-1 446 (500-1)	840-1 466 (500-1)	1000-1¾ 626 (700-1¾)	1140-2½ 766 (800-2½)

NW-1, 03 OCT 2024 to 31 OCT 2024

NW-1, 03 OCT 2024 to 31 OCT 2024