

WAAS CH 81900 W34B	APP CRS 344°	Rwy Idg TDZE Apt Elev	6000 374 374
----------------------------------------	------------------------	-----------------------------	-----------------------------------------

RNAV (GPS) Y RWY 34R

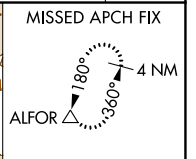
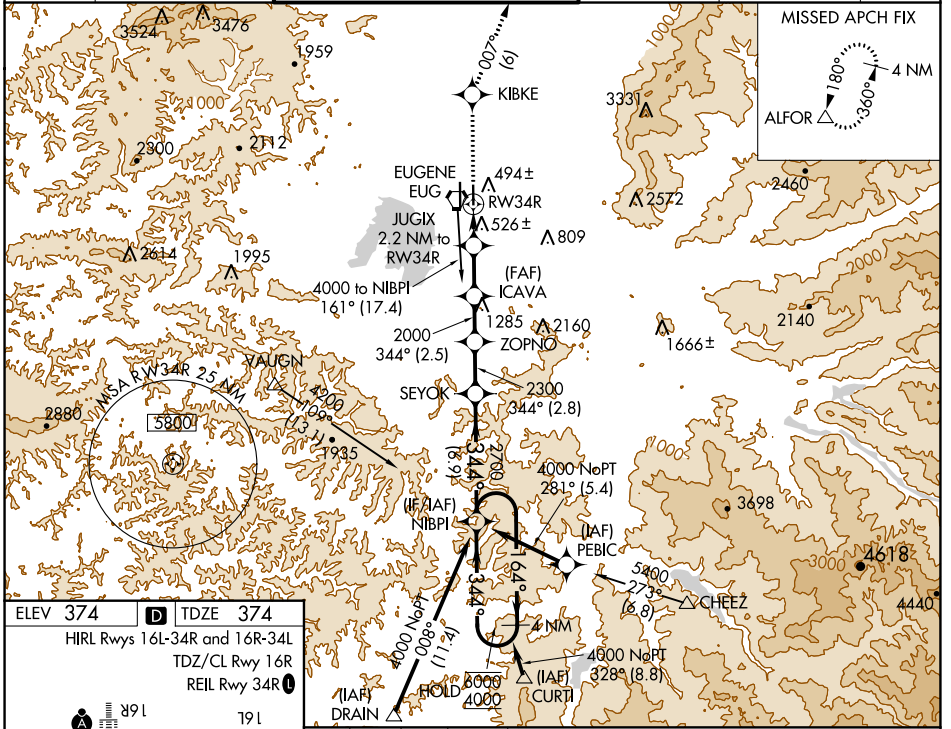
MAHLON SWEET FLD (EUG)

RNP APCH.

Simultaneous approach authorized. LNAV procedure NA during simultaneous operations.
 Use of FD or AP providing RNAV track guidance required during simultaneous operations.
 Rwy 34R helicopter visibility reduction below 3/4 SM NA. For uncompensated Baro-VNAV systems, LNAV/VNAV NA below -10°C or above 54°C.

MISSED APPROACH: Climb to 3000 direct KIBKE then on track 007° to ALFOR and hold.

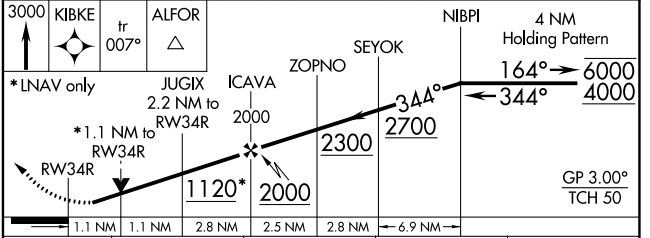
ATIS 125.225	CASCADE APP CON ★ 119.6 348.7	EUGENE TOWER★ 118.9 (CTAF) 371.9 (Rwy 16R/34L) 124.15 371.9 (Rwy 16L/34R)	GND CON 121.7 269.5	CLNC DEL 121.7 269.5	UNICOM 122.95
------------------------	-----------------------------------------	-----------------------------------------------------------------------------------------------	-------------------------------	--------------------------------	-------------------------



ELEV 374 TDZE 374

HIRL Rws 16L-34R and 16R-34L
 TDZ/CL Rwy 16R
 REIL Rwy 34R

344°



CATEGORY	A	B	C	D
LPV DA		636-7/8	262 (300-7/8)	
LNAV/VNAV DA		661-7/8	287 (300-7/8)	
LNAV MDA	780-1	406 (500-1)	780-1 1/8	406 (500-1 1/8)
CIRCLING	820-1	840-1	1000-1 3/4	1140-2 1/2
	446 (500-1)	466 (500-1)	626 (700-1 3/4)	766 (800-2 1/2)

NW-1, 03 OCT 2024 to 31 OCT 2024

NW-1, 03 OCT 2024 to 31 OCT 2024