


WAAS CH 81827 W16A	APP CRS 164°	Rwy Idg TDZE Apt Elev	6000 369 374
--	------------------------	-----------------------------	---

RNAV (GPS) Y RWY 16L

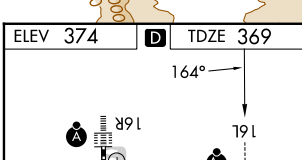
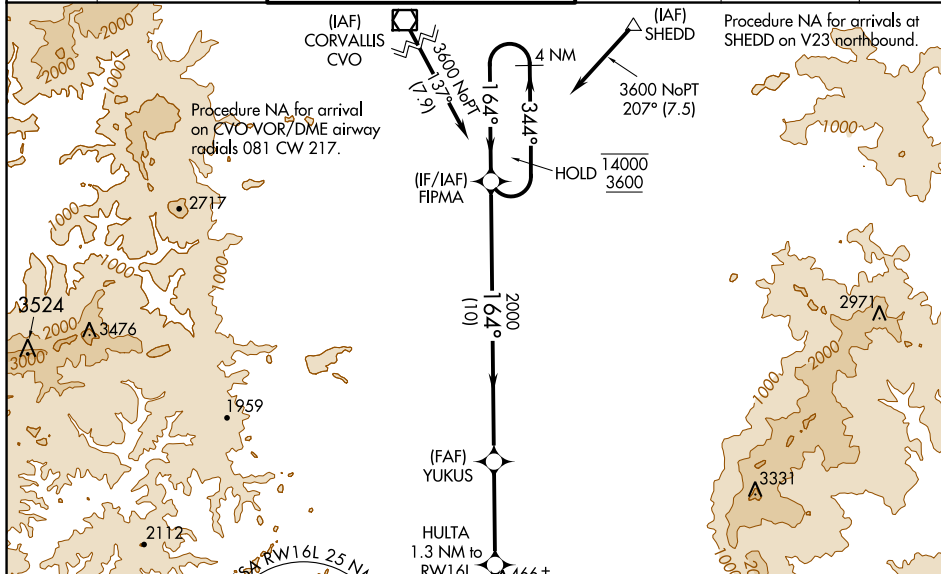
MAHLON SWEET FLD (EUG)

RNP APCH.

⚠ Simultaneous approach authorized. LNAV procedure NA during simultaneous operations. Use of FD or AP providing RNAV track guidance required during simultaneous operations. For uncompensated Baro-VNAV systems, LNAV/VNAV NA below -10°C or above 54°C. For Inop ALS, increase LNAV/VNAV all Cats visibility to 7/5 SM, increase LNAV Cat C/D visibility to 1 SM.

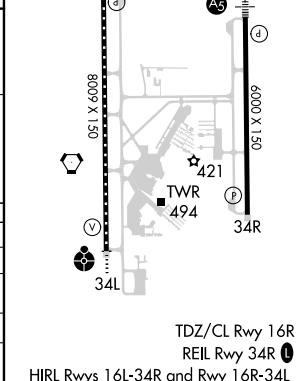
MALSR  MISSED APPROACH: Climb to 5500 direct WELID and on track 160° to SAGIN and hold, continue climb-in-hold to 5500.

ATIS 125.225	CASCADE APP CON* 119.6 348.7	EUGENE TOWER* 118.9 (CTAF) 371.9 (Rwy 16R/34L) 124.15 371.9 (Rwy 16L/34R)	GND CON 121.7 269.5	CLNC DEL 121.7 269.5	UNICOM 122.95
------------------------	--	--	-------------------------------	--------------------------------	-------------------------



4 NM Holding Pattern	FIPMA	YUKUS	HULTA	WELID	SAGIN
14000 ← 344°	164° →	2000	1.3 NM to RWY 16L	466±	tr 160°
3600				494±	*LNAV only
GP 3.00°				1.3 NM	
TCH 52				1.3 NM	
				1.3 NM	

CATEGORY	A	B	C	D
LPV DA		569-1/2	200 (200-1/2)	
LNAV/VNAV DA		632-1/2	263 (300-1/2)	
LNAV MDA	720-1/2	351 (400-1/2)	720-5/8	351 (400-5/8)
C CIRCLING	820-1 446 (500-1)	840-1 466 (500-1)	1000-1 3/4 626 (700-1 3/4)	1140-2 1/2 766 (800-2 1/2)



NW-1, 03 OCT 2024 to 31 OCT 2024

NW-1, 03 OCT 2024 to 31 OCT 2024

TDZ/CL Rwy 16R
REIL Rwy 34R
HIRL Rwy 16L-34R and Rwy 16R-34L