

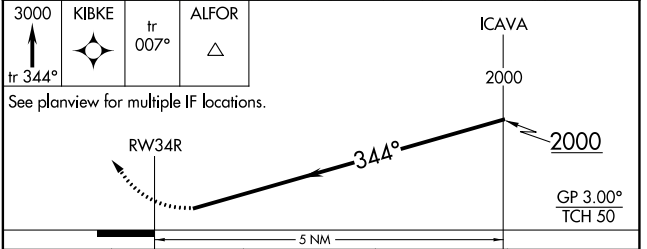
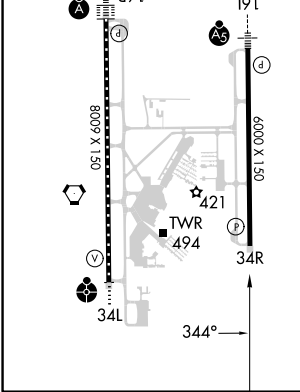
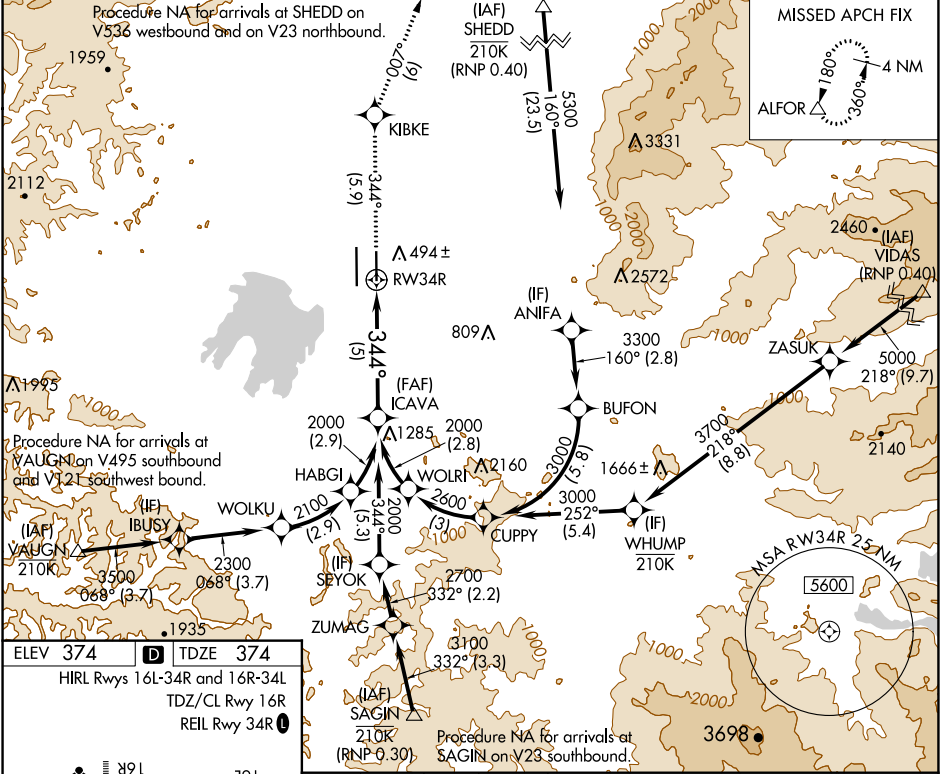
RNAV (RNP) Z RWY 34R

MAHLON SWEET FLD (EUG)

APP CRS	Rwy Idg	6000
344°	TDZE	374
	Apt Elev	374

RNP AR APCH - GPS.		MISSED APPROACH: Climb to 3000 on track 344° to KIBKE and on track 007° to ALFOR and hold.	
Simultaneous approach authorized. For uncompensated Baro-VNAV systems, procedure NA below -6°C or above 54°C.			

ATIS	CASCADE APP CON *	EUGENE TOWER *	GND CON	CLNC DEL	UNICOM
125.225	119.6 348.7	118.9 (CTAF) 371.9 (Rwy 16R/34L) 124.15 371.9 (Rwy 16L/34R)	121.7 269.5	121.7 269.5	122.95



CATEGORY	A	B	C	D
RNP 0.20 DA		754-1	380 (400-1)	
RNP 0.30 DA		786-1 1/8	412 (500-1 1/8)	

AUTHORIZATION REQUIRED

NW-1, 03 OCT 2024 to 31 OCT 2024

NW-1, 03 OCT 2024 to 31 OCT 2024