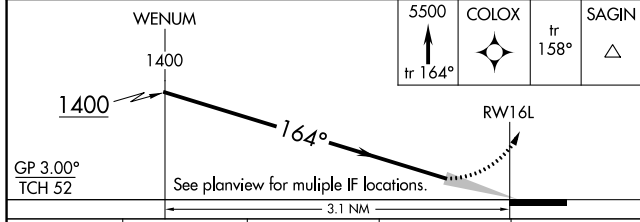
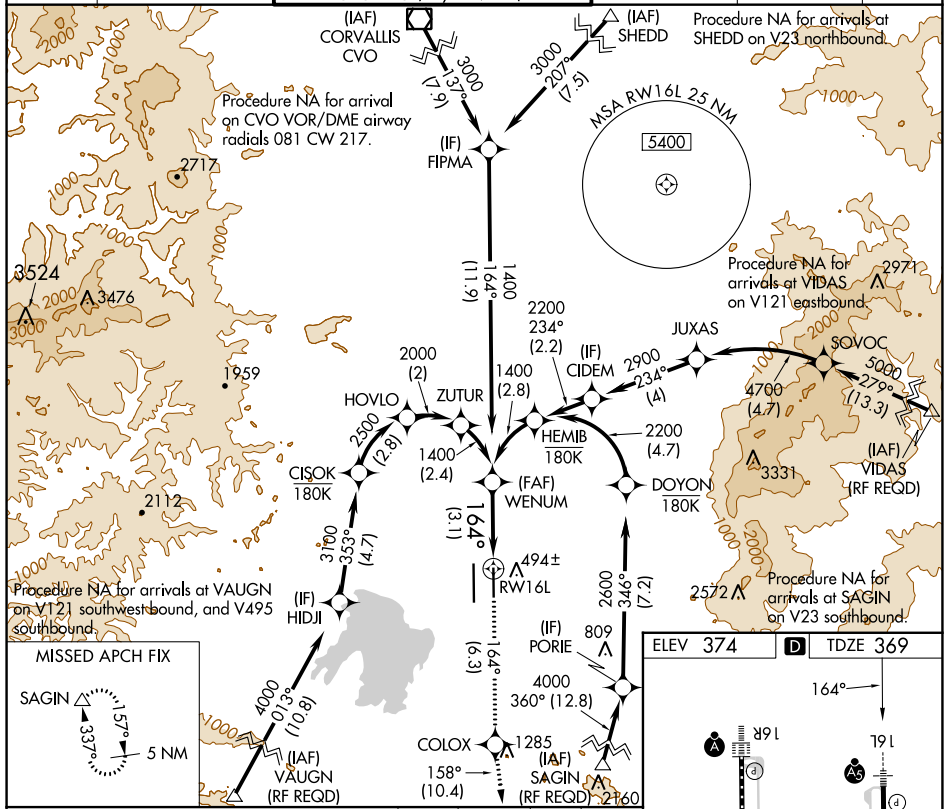


APP CRS	Rwy Idg	<b>6000</b>
<b>164°</b>	TDZE	<b>369</b>
	Apt Elev	<b>374</b>

# RNAV (RNP) Z RWY 16L

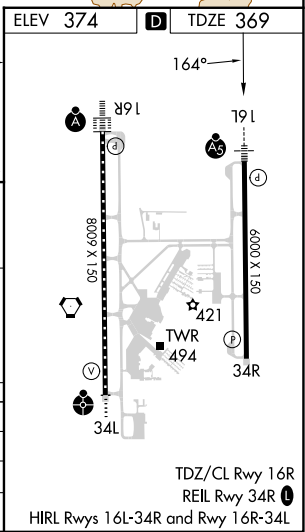
MAHLON SWEET FLD (EUG)

RNP AR APCH.		MALSR	MISSED APPROACH: Climb to 5500 on track 164° to COLOX and on track 158° to SAGIN and hold, continue climb-in-hold to 5500.			
<p>▼ For uncompensated Baro-VNAV systems, procedure NA below -9°C or above 54°C. Simultaneous approach authorized. For inop ALS, increase RNP 0.30 all Cats visibility to 1 SM.</p>						
ATIS	CASCADE APP CON	EUGENE TOWER		GND CON	CLNC DEL	UNICOM
<b>125.225</b>	<b>119.6 348.7</b>	<b>118.9</b> (CTAF) <b>0 371.9</b> (Rwy 16R/34L) <b>124.15 371.9</b> (Rwy 16L/34R)		<b>121.7 269.5</b>	<b>121.7 269.5</b>	<b>122.95</b>



CATEGORY	A	B	C	D
RNP 0.10 DA		699-½	330 (400-½)	
RNP 0.30 DA		749-⅝	380 (400-⅝)	

## AUTHORIZATION REQUIRED



NW-1, 03 OCT 2024 to 31 OCT 2024

NW-1, 03 OCT 2024 to 31 OCT 2024