

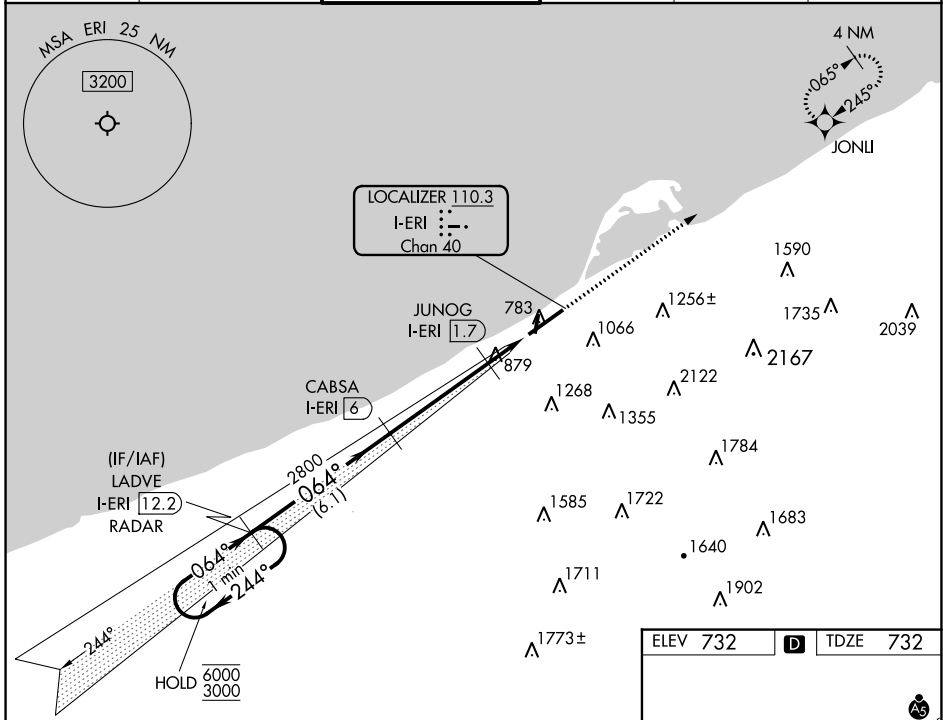
LOC/DME I-ERI 110.3 Chan 40	APP CRS 064°	Rwy ldg 7501 TDZE 732 Apt Elev 732
---	------------------------	---

ILS or LOC RWY 6

ERIE INTL/TOM RIDGE FLD (ERI)

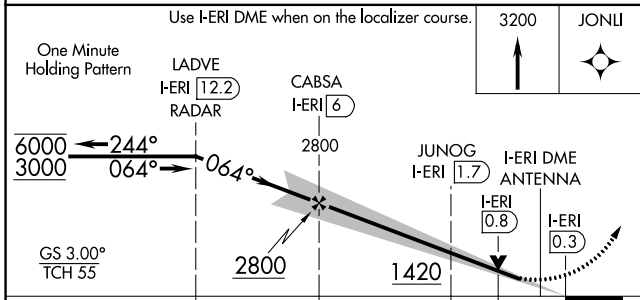
DME required. RADAR required for procedure entry. RNP APCH - GPS.		MALSR	MISSED APPROACH: Climb to 3200 direct JONLU and hold.
▽	Circling to Rwy 2, 20 NA at night. Circling NA southeast of Rwy 6-24. Autopilot coupled approach NA below 1580. For inop ALS, increase S-LOC 6 Cats C and D visibility to RVR 6000.		

ATIS 120.35	BUFFALO APP CON* 121.0 257.8	ERIE TOWER* 118.1 (CTAF) 0 257.8	GND CON 121.9	CLNC DEL 126.8	UNICOM 122.95
-----------------------	--	---	-------------------------	--------------------------	-------------------------

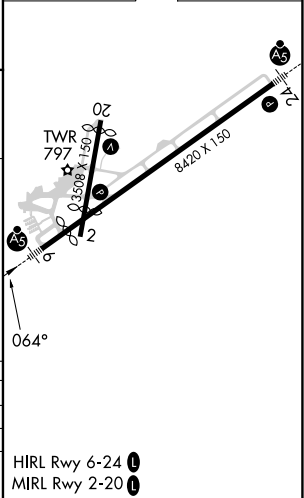


NE-4, 31 OCT 2024 to 28 NOV 2024

NE-4, 31 OCT 2024 to 28 NOV 2024



ELEV 732	D	TDZE 732
----------	----------	----------



CATEGORY	A	B	C	D
S-ILS 6		982/24	250 (300-1/2)	
S-LOC 6	1140/24	408 (500-1/2)	1140/40	408 (500-3/4)
C CIRCLING	1160-1 428 (500-1)	1200-1 468 (500-1)	1200-1 1/2 468 (500-1/2)	1340-2 608 (700-2)

HIRL Rwy 6-24 **1**
MIRL Rwy 2-20 **1**