

ENID, OKLAHOMA

# VOR/DME RWY 17L

VORTAC END <b>115.4</b> Chan <b>101</b>	APCH CRS <b>196°</b>	Rwy Idg TDZE <b>1282</b> Arpt Elev <b>1307</b>
---	-------------------------	--

AL-135 [USAF]

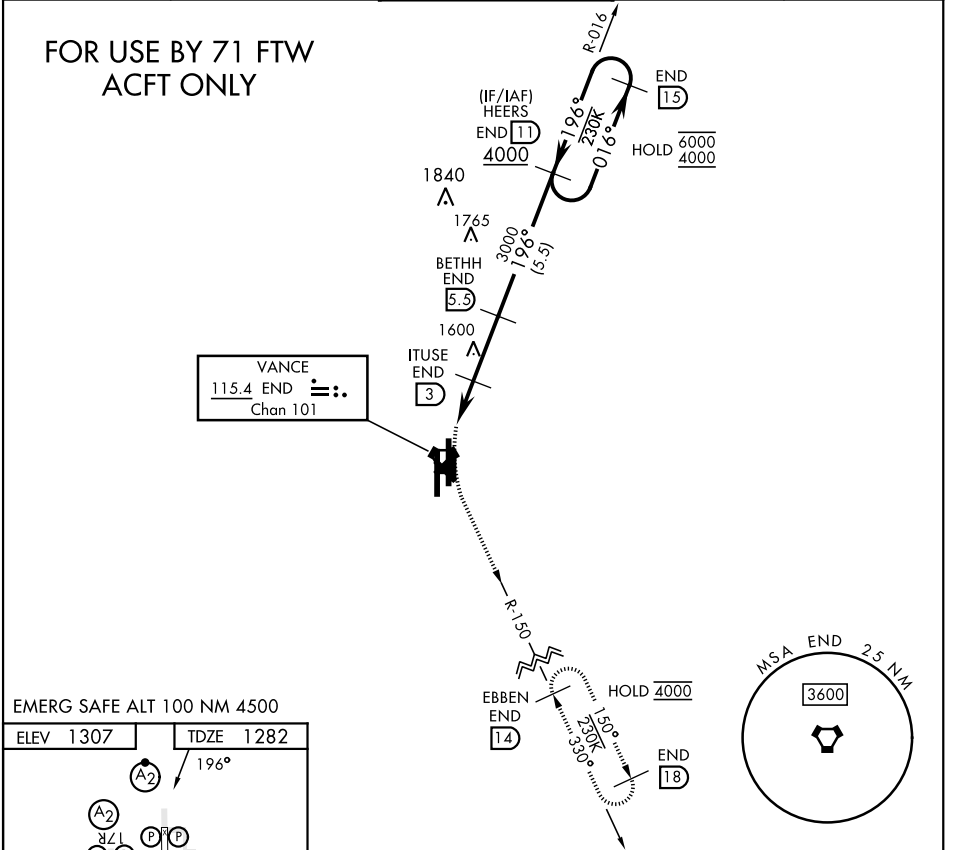
VANCE AFB (KEND)

**▽** MISSED APPROACH: Climbing left turn to 4000 on heading 165°, intercept END VORTAC R-150 to EBBEN and hold.

ATIS ★ <b>115.4 263.15</b>	APP CON <b>125.45 388.2 EAST</b> <b>126.75 346.325 WEST</b>	TOWER ★ <b>124.05 259.1</b>	GND CON <b>121.675 289.4</b>	CLNC DEL <b>225.4</b>
-------------------------------	---	--------------------------------	---------------------------------	--------------------------

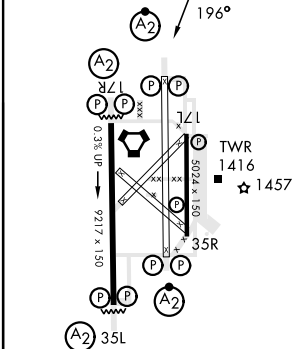
## FOR USE BY 71 FTW ACFT ONLY

VANCE  
115.4 END  
Chan 101



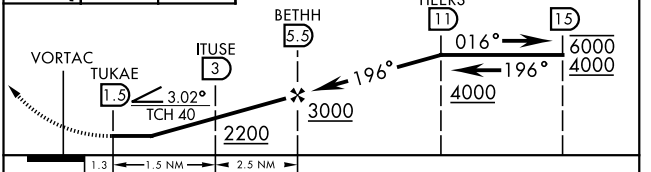
EMERG SAFE ALT 100 NM 4500

ELEV 1307	TDZE 1282
-----------	-----------



HIRL Rwy 17C-35C, 17R-35L  
MIRL Rwy 17L-35R  
REIL Rwy 17L-35R

4000 hdg 165°	↑ END R-150	EBBEN END 14	VGSI and descent angles not coincident (VGSI Angle 3.00/TCH 54).
---------------------	-------------------	--------------------	---



CATEGORY	A	B	C	D
S-17L	1720-1½	438 (500-1½)		NA
<b>C</b> CIRCLING	1760-1½	453 (500-1½)		NA

ENID, OKLAHOMA

36°20'N-97°55'W

VANCE AFB (KEND)

Orig 24MAR22

# VOR/DME RWY 17L

SC-1, 31 OCT 2024 to 28 NOV 2024

SC-1, 31 OCT 2024 to 28 NOV 2024