

ENID, OKLAHOMA

RNAV (GPS) RWY 17L

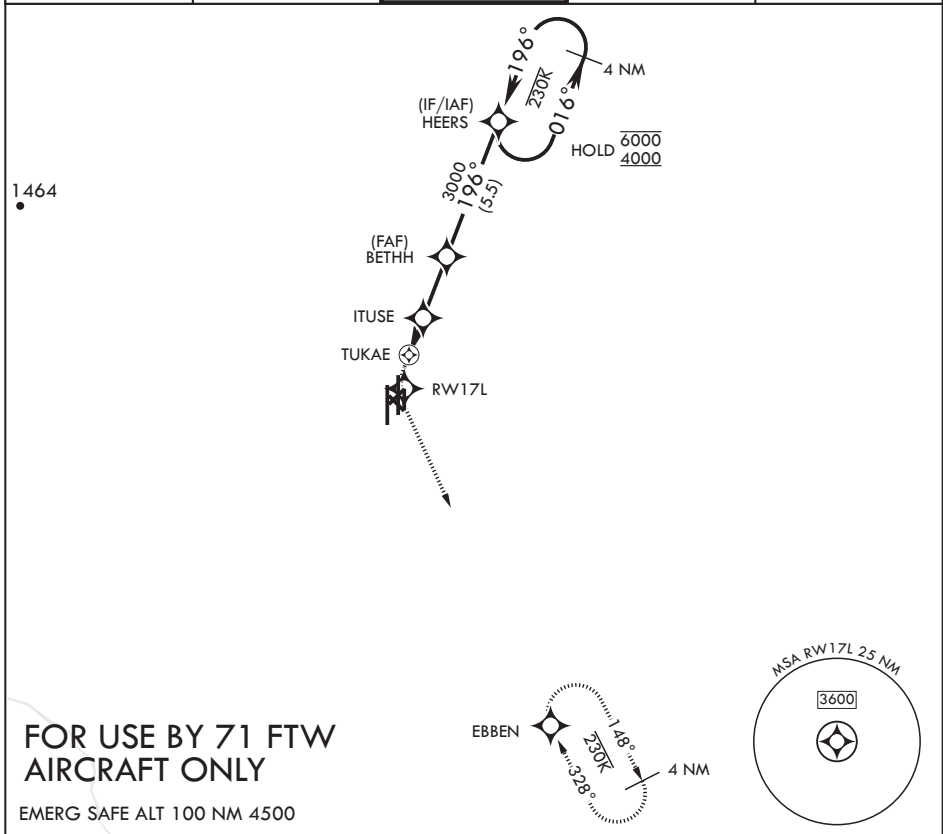
APCH CRS	Rwy Idg	5024
196°	TDZE	1282
	Arprt Elev	1307

AL-135 (USAF)

VANCE AFB (KEND)

RNP APCH	MISSED APPROACH: Climb to 1900 then climbing left turn to 4000 direct EBBEN and hold.
Circling Visibility Reduction by Helicopters NA.	

ATIS* 115.4 263.15	APP CON 125.45 388.2 (E) 126.75 346.325 (W)	TOWER* 124.05 259.1	GND CON 121.675 289.4	CLNC DEL 225.4
-----------------------	---	------------------------	--------------------------	-------------------



1900 4000 EBBEN	HEERS Holding Pattern 4 NM 016° 6000 196° 4000	ELEV 1307	TDZE 1282	
TUKAE ITUSE BETHH 2200 ≤ 2.99° TCH 54 1.3 1.5 NM 2.5 NM	RWY 17L 35L 35R 3024 x 150 9217 x 150 TW R B C N 0.3% UP	HIRL Rwy 17C-35C, 17R-35L MRL Rwy 17L-35R REIL Rwy 17L, 35R		
CATEGORY	A	B	C	D
LNAV MDA	1720-1½	438 (500-1½)	NA	NA
CIRCLING	1760-1½	453 (500-1½)	NA	NA

ENID, OKLAHOMA

36°20'N - 97°55'W

VANCE AFB (KEND)

Orig 24MAR22
TERPS

RNAV (GPS) RWY 17L

SC-1, 31 OCT 2024 to 28 NOV 2024

SC-1, 31 OCT 2024 to 28 NOV 2024