

ILS or LOC RWY 17C

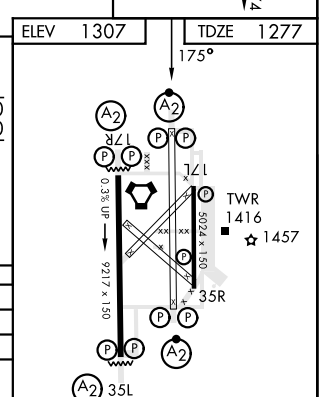
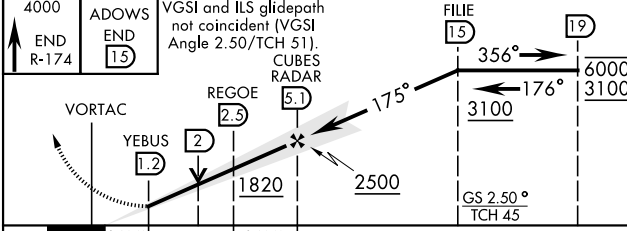
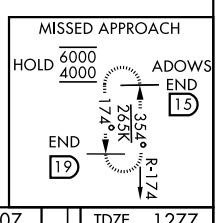
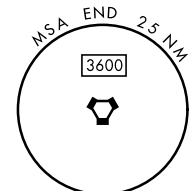
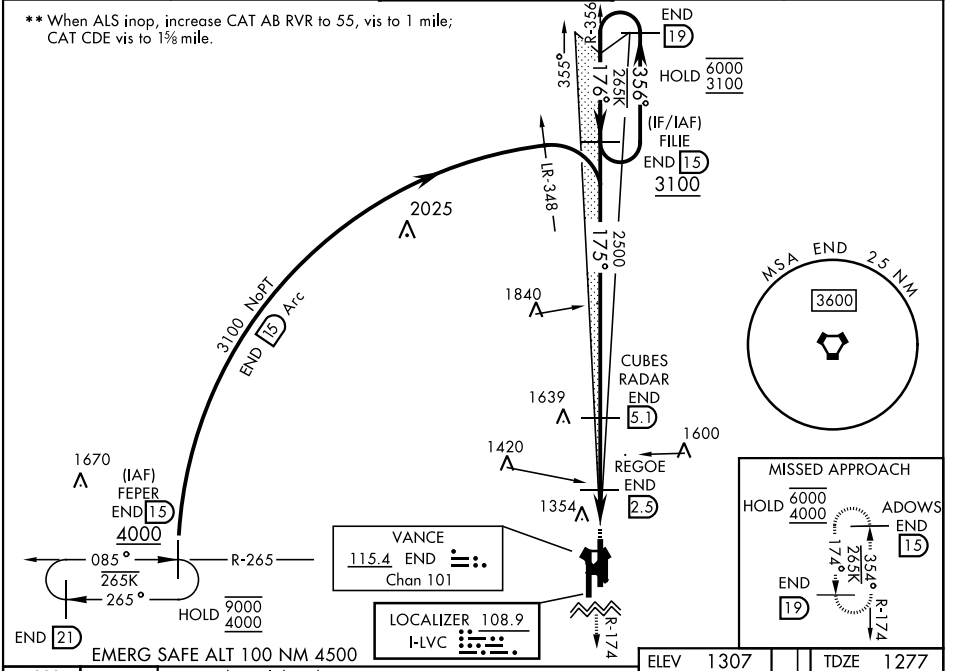
LOC I-LVC 108.9	APCH CRS 175°	Rwy Idg 9217
		TDZE 1277
		Arprt Elev 1307

AL-135 [USAF]

VANCE AFB (KEND)

RADAR or DME required.	SALSF (A2)	MISSED APPROACH: Climb to 4000, intercept END VORTAC R-174 to ADOWS and hold.
------------------------	----------------------	---

ATIS ★ 115.4 263.15	APP CON 125.45 388.2 EAST 126.75 346.325 WEST	TOWER ★ 124.05 259.1	GND CON 121.675 289.4	CLNC DEL 225.4
-------------------------------	---	--------------------------------	---------------------------------	--------------------------



EMERG SAFE ALT 100 NM 4500	ADOWS END 15	VGS1 and ILS glidepath not coincident (VGS1 Angle 2.50/TCH 51). CUBES RADAR	FILE 15	356°	19	6000	3100
4000	END R-174			175°			
				176°			
				175°			
				3100			
				GS 2.50°			
				TCH 45			
				0.6 NM	1.3 NM	2.6 NM	
CATEGORY	A	B	C	D	E		
S-ILS 17C	1477/40		200	(200-¾)			
S-LOC 17C *	1680/40 403 (400-¾)		1680/50 403 (400-1)				
CIRCLING	1760-1		1800-1½	1900-2	2300-3		
	453 (500-1)		493 (500-1½)	593 (600-2)	993 (1000-3)		
WITHOUT REGOE FIX							
S-LOC 17C **	1820/40 543 (600-¾)		1820-1½ 543 (600-1½)				
CIRCLING	1820-1		1820-1½	1900-2	2300-3		
	513 (600-1)		513 (600-1½)	593 (600-2)	993 (1000-3)		

HIRL Rwy 17C-35C, 17R-35L					
MIRL Rwy 17L-35R					
REIL Rwy 17L-35R					
FAF to MAP 3.9 NM					
Knots	60	90	120	150	180
Min:Sec	3:54	2:36	1:57	1:34	1:18

ILS or LOC RWY 17C

SC-1, 31 OCT 2024 to 28 NOV 2024

SC-1, 31 OCT 2024 to 28 NOV 2024